

**Sheffield
Hallam
University**

EXPERIENCE

**GREAT
EVENTS**

Exceptional events planned to perfection



At Sheffield Hallam, we go further to make your event a success.

We deliver events of all sizes, from small meetings to major international conferences and everything in between. Whatever you're planning, our experienced, professional events specialists are on hand to make sure every last detail is taken care of.

From the quality of the coffee in your delegate's cup to entertainment that will take their breath away, our vast expertise and experience will ensure that your event is unforgettable.

"From our initial meeting with Sheffield Hallam, it was clear that the vision of what we were hoping to achieve was understood. The team were not only able to deliver on our brief but take it further, making suggestions we could incorporate to fully utilise the fantastic facilities that Hallam has to offer."

In terms of value for money and the level of service received, there is no competition."

Marcus Bowen
Events Manager
British Tinnitus Association

Why Sheffield Hallam?

SHEFFIELD HALLAM OFFERS

- city centre venues with excellent transport links
- incredible venues including lecture theatres, meeting rooms and large halls
- spaces equipped with high-specification audio visual equipment
- seasonal catering menus using ingredients from local suppliers
- inspiring exhibition areas, restaurants and specialist facilities
- a full event management service

500+

high-quality venues

100,000+

attendees each year

700+

events held each year

2

STUNNING CAMPUSES

MINUTES FROM SHEFFIELD TRAIN STATION

HOURS FROM LONDON BY TRAIN

To find out more about events at Sheffield Hallam, visit shu.ac.uk/eventservices

0114 225 5340

Stunning facilities for any occasion

Our contemporary facilities provide an excellent backdrop to your conferences, meetings and events. Our locations offer a range of spaces to accommodate all types of events and meetings, whether you're holding a meeting with a difference, a team awayday, or an international conference.

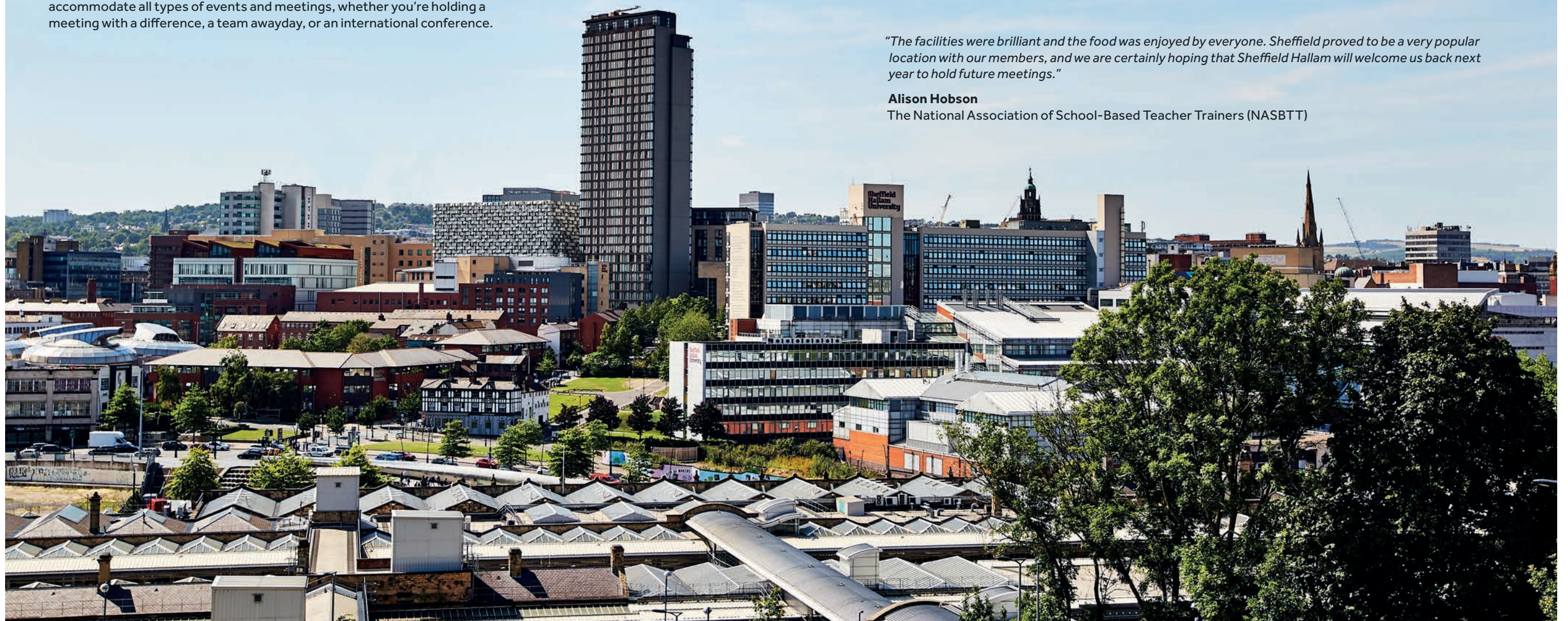
THE PERFECT LOCATION FOR YOU

- The choice of our vibrant City Campus in the heart of the city, or our picturesque Collegiate Campus, just minutes away.
- Large, tiered lecture theatres seating between 90 and 446 delegates, equipped with cutting-edge audio visual equipment.
- 500 high-quality meeting rooms with flexible seating arrangement for up to 230 people.
- Specialist spaces including world-class professional sporting facilities, state-of-the-art cinema and computing suites.
- Buildings full of architectural character across our estate, providing the perfect location for any event.

"The facilities were brilliant and the food was enjoyed by everyone. Sheffield proved to be a very popular location with our members, and we are certainly hoping that Sheffield Hallam will welcome us back next year to hold future meetings."

Alison Hobson

The National Association of School-Based Teacher Trainers (NASBTT)



To find out more about our amazing facilities,
visit shu.ac.uk/eventservices

0114 225 5340

At the heart of the UK

Sheffield is one of England's largest cities, with excellent road, rail and air networks. The city has direct links to Manchester Airport and is just a 45 minute journey from Doncaster Sheffield Airport.

CITY	DISTANCE BY RAIL (hours)
LONDON	2:01
BIRMINGHAM	1:03
MANCHESTER	0:51
LEEDS	0:39
EDINBURGH	3:26

"Sheffield Hallam University is an ideal location for an international event attracting hundreds of delegates from all over the world. With its close proximity to the railway station, easy access to motorways and the Owen and Charles Street Buildings located right in the heart of the city, you can see why it's first choice for many events."

Lucy Oxley
Events and Marketing
Manager, Geographical
Association



STUNNING VENUES ACROSS SHEFFIELD

Our City Campus is approximately ten minutes from junction 33 of the M1, a two-minute walk from Sheffield train station and right next to the city's bus and tram Transport Interchange.

Collegiate Campus is approximately 1.5 miles from the city centre with excellent public transport links to the rest of the city and the railway station.

The University's Sports Park and Athletics Stadium are suitable for a variety of sports and team building events, featuring expansive pitches and on-site catering facilities.



To find out more about our stunning venues, visit shu.ac.uk/venues

0114 225 5340

To find out more about our inspiring locations, visit shu.ac.uk/eventservices



THE PERFECT PACKAGE FOR YOU

Our package prices are all inclusive so you don't need to worry about hidden costs. If these don't fit your needs perfectly, you can customise our existing packages or we can design a bespoke package to meet your requirements.

PLATINUM CONFERENCE PACKAGE

Perfect for large conferences requiring our premium theatres and audio visual support.

Day rate: £39 + VAT per delegate (minimum 100 delegates)

- Premium conference theatre with full lighting control
- Four workshop rooms
- Freshly prepared buffet lunch
- Morning refreshments with fruit juices and Danish pastries
- Afternoon refreshments with fruit juices and homemade cakes
- Mineral water for speakers
- Conference notepads
- Fully networked PC with internet connection and data projector
- Microphones for speakers and top table
- Wifi internet access available for all delegates

GOLD CONFERENCE PACKAGE

Perfect for meetings and events that require conference facilities.

Day rate: £28 + VAT per delegate (minimum 20 delegates)

- Room hire
- Freshly prepared buffet lunch
- Morning and afternoon refreshments with biscuits
- Mineral water for speakers
- Flipchart pad and pens
- Data projector and networked computer in main room
- Wifi internet access available for all delegates

To find out more about creating your ideal event, visit shu.ac.uk/eventservices

Take advantage of our world class services

AS A LEADING APPLIED UNIVERSITY WE HAVE ACCESS TO

- expertise across a broad range of industries and sectors
- leaders in specific fields to network with your delegates
- students who can work with you and inject fresh ideas
- additional speakers to bring your event to life

MODERN AUDIO VISUAL FACILITIES, INCLUDING

- internet access and high-speed wifi
- high-definition projectors and screens
- computer suites
- voting button technology
- experienced technicians
- in-built recording technology in lecture theatres

CATERING SERVICES AND QUALITY SEASONAL FOOD, WITH

- top chefs working with the best locally sourced ingredients
- modern breakout spaces for dining
- catering direct to your meeting room
- cafés and delis at both campuses
- menus tailored to your clients' tastes and any dietary requirements

REGIONAL PARTNERSHIPS, OFFERING

- discounted rates at several quality hotels
- off-campus specialist meeting spaces and facilities
- a vast network of expertise offering the best external services to complement your event

To find out more about our expert services, visit shu.ac.uk/eventservices

0114 225 5340

Details make the difference

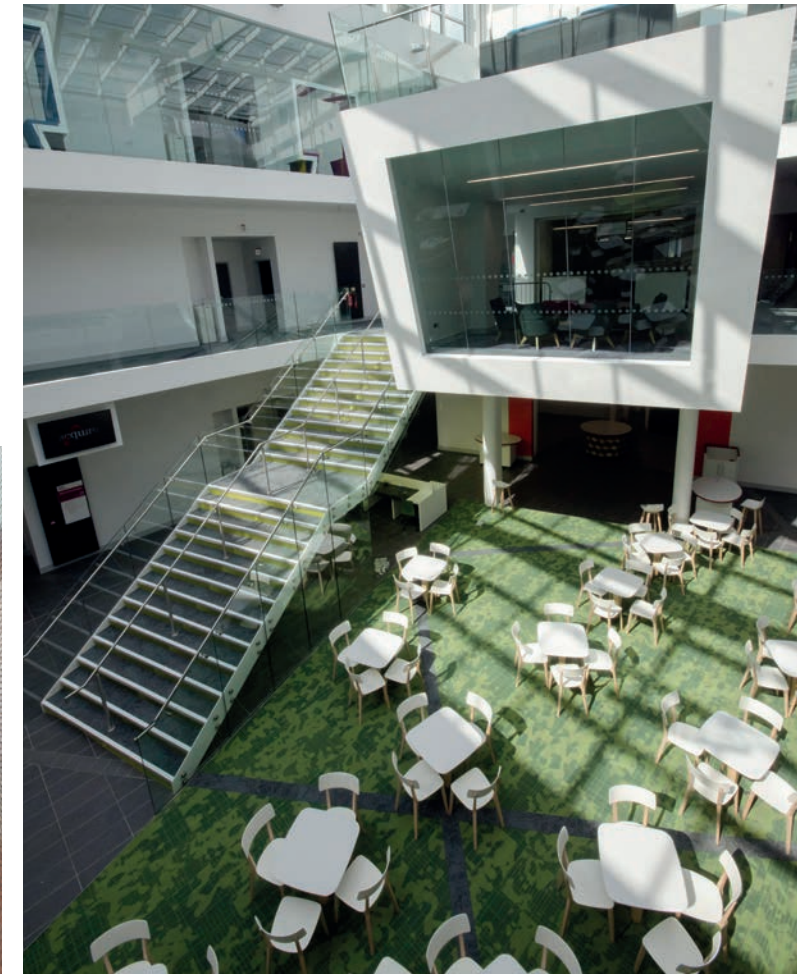
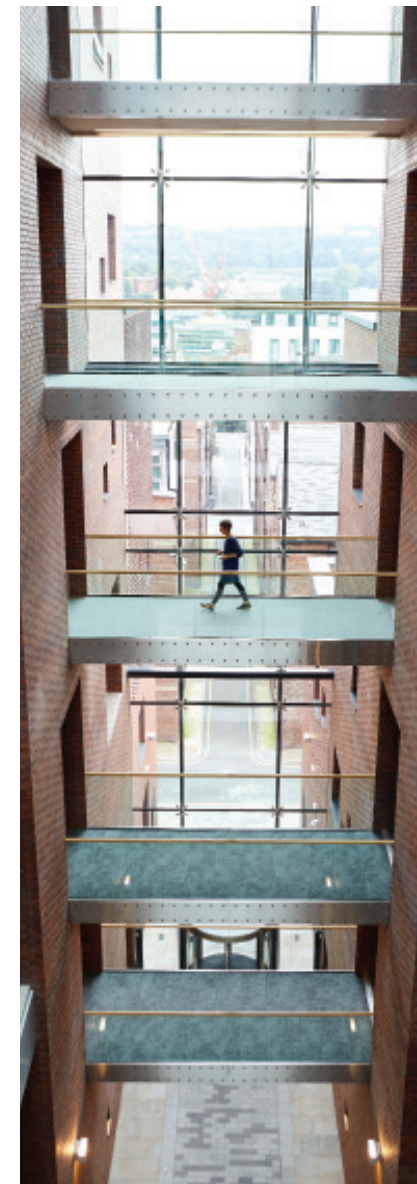
Our experienced event management team offers a comprehensive event planning, production and delivery service, tailored to your specific requirements.



To find out more about our event management services, visit shu.ac.uk/eventmanagement

"The feedback from our delegates has been 100% positive. Thank you for your patience and efficient help during the planning stage and brilliance at the event. The venue was perfect. There have been many comments on how delicious the food was. I would wholeheartedly recommend Sheffield Hallam as a conference venue, it's been a real pleasure to work with your team."

Tamizan Savill
Development Manager
Association for Contemporary Jewellery



To find out more about how we can create your ideal event, visit shu.ac.uk/eventservices

0114 225 5340

**Sheffield
Hallam
University** | Conferences
Meetings
Events

**READY
TO
TALK?
0114 225 5340**

eventservices@shu.ac.uk

[🐦 @ConfMeetEvents](https://twitter.com/ConfMeetEvents)

[@shuevents](https://www.instagram.com/shuevents)

shu.ac.uk/eventservices