

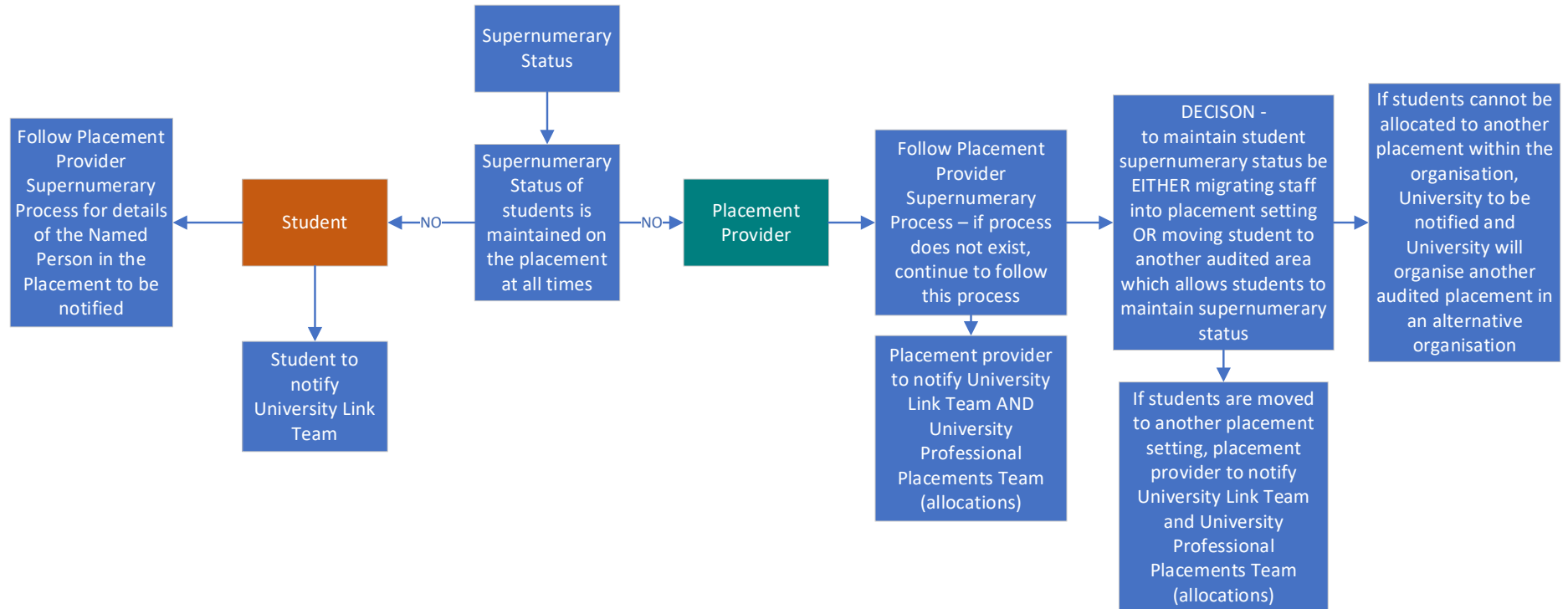
Nursing and Midwifery Student Supernumerary Status on Placement

Definition

“Supernumerary: students in practice or work placed learning must be supported to learn without being counted as part of the staffing required for safe and effective care in that setting. For apprentices, this includes practice placements within their place of employment; this does not apply when they are working in their substantive role. Placements should enable students to learn to provide safe and effective care, not merely to observe; students can and should add real value to care. The contribution students make will increase over time as they gain proficiency and they will continue to benefit from ongoing guidance and feedback. Once a student has demonstrated that they are proficient, they should be able to fulfil tasks without direct oversight. The level of supervision a student needs is based on the professional judgement of their supervisors, taking into account any associated risks and the students’ knowledge, proficiency and confidence.” ([NMC, 2022, Quality Assurance Handbook](#))

Advice

- Students are reminded that when they are on placement they must be supervised at all times by a registrant.
- Students are only to take on tasks that are appropriate to their role as a student and their stage of professional development as a pre-registration learner under the supervision of a registrant.
- All students must familiarise themselves with their placement provider’s policies and processes for maintaining the supernumerary status of students on placement and students must follow these policies and processes while on placement.
- Students must inform the university link team at the earliest possible opportunity if they consider that they are not working within their placement provider’s policies and processes for maintaining the supernumerary status of students on placement. Students must immediately raise this through the placement provider’s process for reporting a concern. Students - Please refer to the process map on the following page.



•