

CRESR

Annual Report

2022-23



Contents

Welcome	1
About the centre	3
Our research	4
Staff updates	10
Staff list	12
Our clients	16
News and events	17
People, Place and Policy (PPP)	19
CRESR seminar series	20
Publications	21
PhD students 2022/2023	25

This report has been published by the Centre for Regional Economic and Social Research (CRESR) at Sheffield Hallam University and is designed to give an overview of the activities in the Centre between the dates of 1st August 2022 and 31st July 2023.

Published: December 2023

DOI: 10.7190/cresr.2023.6573902089

This publication is available at: <https://www.shu.ac.uk/centre-regional-economic-social-research/publications/cresr-annual-report-2022-23>

Our address is: Centre for Regional Economic and Social Research (CRESR), Sheffield Hallam University, Sheffield, S1 1WB.

Any enquiries regarding this publication should be sent to us at: cresr@shu.ac.uk

Or you can visit our website and X account: www.shu.ac.uk/cresr / [@CRESR_SHU](https://twitter.com/CRESR_SHU)

Welcome

Reflections on another busy successful year.

I am proud to introduce this Annual Report, in which we reflect on and celebrate the many achievements of the CRESR team over the 2022-23 academic year.

As for many organisations, the past years have led to new and quite different ways of doing things. Sometimes it is only with the benefit of a few years' hindsight that you recognise just how fundamentally some aspects of our work have changed. The past academic year was very much one of us finding our feet in this new world, whilst moving confidently forward in our vision and ideas – including welcoming and learning from the many new members of staff who have joined our expanding team.

Much of our work is now done in the 'hybrid spaces' between home, campus or wherever else we find ourselves, thanks to technology. The flexibility this has brought has, I think, been revolutionary in terms of helping all our staff maintain the right work-life balance whilst ensuring we work collaboratively in the most effective way possible. Sometimes that means face-to-face meetings, other times it's about working more asynchronously using Teams and the other collaboration software that we now almost take for granted. But through 2022-23 we've also been a bigger presence back in our office space, both in the Charles Street Building and the Advanced Wellbeing Research Centre in Attercliffe. The key is using space smartly and effectively for the types of things that technology just can't replace. And for that reason, we're incredibly excited to be looking forward to moving into our new CRESR office towards the end of the current academic year in 2024. This will be located in one of the new buildings, which are rapidly taking shape opposite Sheffield Railway Station.

The University's new Research and Innovation strategy has shaped our thinking about our plans in



Sheffield Hallam University's new building under construction on the corner of Howard Street and Paternoster Row. (Photo © Owen Anthony)

CRESR to a significant extent, with some significant impacts already manifest throughout 2022-23. Taking each of the key planks of the strategy, I am really pleased how we have developed significant new programmes of work and activity which respond to the University's ambitions, but in a way that is 'distinctively CRESR' – that is to say, with our unerring focus on our core mission of applied policy research related to disadvantaged people and places, and our unique synergy of applied contract research and academic excellence. So, for example, over the year we:

- Significantly grew our ambition and our success with major funders of academic research, including for example UKRI, Leverhulme and the British Academy;
- Invested in and expanded our Research School, welcoming new PhD students working on cutting edge projects that are highly integrated with our core research themes; and

- Supported our staff development through successfully bidding for a number of exciting projects and other transformational activities funded through the new Sheffield Hallam Research and Innovation Fund (SHRIF) and Early Career Research and Innovation Fellowships (ECRIFs).

As I mentioned above, our team grew over the past year. This has partly been in response to significant new contracts with Government for large programmes of policy research and evaluation. As we reported last year, we were successful in our bids to deliver major research and evaluation programmes for the Department of Levelling Up, Housing and Communities (DLUHC) and the Department for Transport (DfT). These contracts have since yielded several very significant projects, which we started working on in earnest in 2022-23. These have included the first national evaluation of the Affordable Homes Programme, a major update of national research into Supported Housing, and evaluation projects related to travel to school and Active Travel Social Prescribing. Many of our new colleagues have helped us to grow our expertise and capacity in areas directly related to these new projects – you can read more about them on p.10.

Our core research themes – which are the focus for our five research clusters – continue to be highly relevant to the multiple, interconnected policy challenges faced in the UK and in other countries. You can read more about the clusters and their activities from p.4. To pick out only a few selected examples:

- Several projects on the broad theme of homelessness as it affects different populations, including people being treated for drug and alcohol addiction and those who experience multiple disadvantage.
- A major programme of work supported by Research England to transform the capacity for applied policy research engagement with regional partners – the Yorkshire Policy and Engagement and Research Network (Y-PERN).
- Work supporting one of the country’s first local Health Determinants Research Collaborations, an investment by the National Institute for Health Research (NIHR) into improving public health evidence and partnership working in Doncaster.
- A series of interconnected projects examining the challenges of industrial decarbonisation, especially in terms of the impacts on local populations and small businesses.
- The conclusion of a major study into Green Social Prescribing, which supports people to engage in nature-based activities to improve their mental and physical health.

These and many other projects have yielded dozens of new reports and research papers, the details of which can be found in this report and on our website. Do let us know if you want to continue the conversation on these or any other aspect of our work. We’d be delighted to hear from you.



Ed Ferrari
CRESR Director



Ian Wilson
CRESR Deputy
Director

About the centre

Key information and figures for 2022/23 academic year.

As a leading UK policy research centre, CRESR seeks to understand the impact of social and economic disadvantage on places and people, and assess critically the policies and interventions targeted at these issues. Clients include government departments and agencies, local authorities, charities and foundations, international organisations, and the private sector. We offer research expertise covering a wide range of qualitative and quantitative methods, evaluation, policy advice and guidance, and consultancy.



CRESR in numbers



We had **37** projects awarded with a win rate of **69%**

This was supported by



38
staff



■ Professors
■ Principal Research Fellows, Readers and Associates
■ Senior Research Fellows ■ Research Fellows
■ Research Associates ■ Secondment
■ Professional Services

Who published over

75
outputs



We had a total of **23** students including, **7** new students and **3** students who completed their PhDs.

Our research

Since their establishment in 2020/21, our five Research Themes have increased their relevance and impact. A summary of each theme is below along with a link to more information on our website. The following pages of this report provide a snapshot of the work in each of our themes.



Housing and Place

Lead: Jonathan Webb

Areas covered: Housing; homelessness; regeneration; place/identity; planning; neighbourhoods and community.

[Learn more](#)



Inclusive Economy

Lead: Richard Crisp

Areas covered: Labour market analysis; employment initiatives; skills; welfare reform; benefits analysis; spatial inequalities and inclusive growth; industrial strategy and productivity.

[Learn more](#)



Policy Research and Evaluation

Lead: Julian Dobson

Areas covered: Policy devolution and implementation; systems analysis; governance; politics; evaluation and research methods.

[Learn more](#)



Sustainable Futures

Lead: Aimee Ambrose

Areas covered: Energy policy; fuel poverty; environmental policy; green and blue infrastructure; transport, low carbon economy and enterprise.

[Learn more](#)



Voluntary and Community Sector

Lead: Chris Damm

Areas covered: Infrastructure; funding; social finance and social investment; public services reform; social prescribing; health and social care.

[Learn more](#)



Housing and Place



Key projects

- **Evaluation of the Rough Sleeping Drug and Alcohol Treatment Grant**

Dr Stephen Green is leading this project for The Department for Health and Social Care (DHSC). The client commissioned a consortium to carry out an impact, economic and process evaluation of the Rough Sleeping Drug and Alcohol Treatment Grant (RSDATG).

- **Trauma-informed approaches in homelessness practice: an exploration of practitioner understandings and implementation**

Dr Lindsey McCarthy led this project using internal funding. The aim of this project was to understand and respond to trauma and its effects for people experiencing homelessness and multiple disadvantage. The findings from the project have been published and are available on the CRESR website.

- **Understanding Women's Need for Safe Space: Evaluation of The Sanctuary at the Marylebone Project**

This project for the Church Army was led by Dr Emma Bimpson and involved a team of CRESR researchers. This study involved understanding how The Sanctuary, based at The Marylebone Project in Westminster, supported women experiencing homelessness.

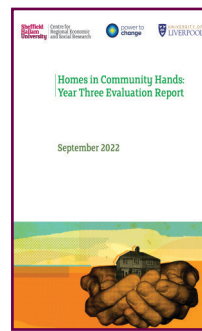
- **BAME Community-led Housing: Barriers, Opportunities and Good Practice**

This 12 month project had various funders and was led by Dr Yael Arbell and involved a team of researchers from Sheffield Hallam University, Leeds Community Homes, Pathway Housing Solutions and the University of Liverpool. It explored practices and issues in England affecting Black and Minority Community Led Housing.

- **Home Improvement Services in England – National Evaluation**

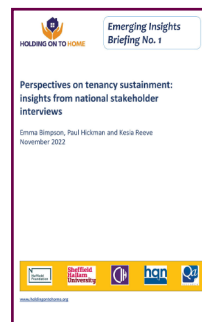
The Centre for Ageing Better are building the evidence base and understanding of what works in terms of home improvement services across England. A consortium of research partners led by Jan Gilbertson are evaluating services across England.

Featured outputs



[Homes in Community Hands: Year Three evaluation report \(PDF 1.6 MB\)](#)

Yael Arbell, Tom Archer, Tom Moore, David Mullins and Mia Rafalowicz-Campbell



[Perspectives on tenancy sustainment: insights from national stakeholder interviews \(PDF 332.3 KB\)](#)

Emma Bimpson, Paul Hickman and Kesia Reeve

Inclusive Economy



Key projects

● Yorkshire Policy and Engagement Research Network

Professor Peter Wells is leading a team of CRESR researchers to deliver this project for Research England. CRESR will be leading the delivery of research for the South Yorkshire Good Work Commission – this is one of the South Yorkshire Mayor’s manifesto commitments and a key policy objective for the South Yorkshire Mayoral Combined Authority and partners in the region.

● The Geography of Economic Inactivity

Using internal funding, Professor Christina Beatty led this project to investigate the underpinning geography of economic inactivity across Britain and highlight how this can inform the development of policy solutions.

● Changing places of work: a place-based approach for re-imagining work in fossil free industrial towns of the future

Formas, Forte and the Swedish Research Council funded this study, led by Professor Will Eadson. The project which is still ongoing is examining how industrial transformation can contribute to thriving places in zero carbon economies.

● This-Ability

Nadia Bashir has been leading a team of CRESR researchers to deliver this project for The Humber Learning Consortium. This evaluation is now in it’s final year and there are outputs available on the CRESR website showing key findings so far.

● Understanding the SEED domains of wellbeing

Dr Richard Crisp led this scoping review commissioned by Carnegie UK. The project team included researchers from Sheffield Hallam University, Anglia Ruskin University, Simetrica Jacobs and Universität Basel.

Featured outputs



[This-Ability Evaluation Report 2022 \(PDF 2 MB\)](#)

Nadia Bashir and Norman Richards

Policy Research and Evaluation



Key projects

● National Civic Impact Accelerator

Professor Ed Ferrari is leading a team of CRESR researchers to deliver this project for Reserach England. The National Civic Impact Accelerator (NCIA) is an ambitious three-year programme to gather evidence and intelligence of what works, share civic innovations, and provide universities with the framework and tools to deliver meaningful, measurable civic strategies and activities.

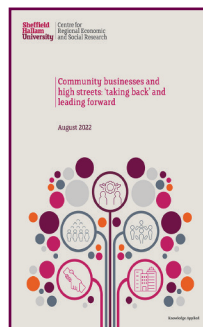
● Active Travel Portfolio Research and Evaluation Programme

This five year project for the Department of Transport is being led by Dr Stephen Parkes and involves colleagues from Sheffield Hallam University, NatCen Social Research and Mosodi Ltd. CRESR has been commissioned to evaluate the active travel portfolio of funding that is supporting local authorities across England to implement a range of schemes to help deliver on the aims of Gear Change.

● Doncaster Health Determinants Research Collaboration (HDRC)

Local government is well placed to address inequalities and factors that cause ill health, for example, whether we live in a safe and warm house. Evidence from research can be used by local government in its decision making and this project will address the various challenges involved. The project team comprises officers and academic staff from Doncaster Council, Sheffield Hallam University and University of Sheffield.

Featured outputs



[Community businesses and high streets: 'taking back' and leading forward \(PDF 6935 KB\)](#)

Julian Dobson

Sustainable Futures



Key projects

- **Looking back to move forward: a social and cultural history of heating (JUSTHEAT)**

Work is continuing on this project being led by Professor Aimee Ambrose. The team which comprises colleagues from Sheffield Hallam University, University of Sheffield, Lund University, Tampere University and Babes Bolyai University have produced a number of outputs which can be accessed on the CRESR website.

- **Beyond the Super Clusters: Decarbonisation in Dispersed Industrial Places**

Dr Phil Northall is leading a team of CRESR researchers to deliver this internally funded project. By examining activity in three case study locations in the UK and Europe, and speaking to stakeholders in each, the aim of this project is to support transformative change for 'green and just' industrial decarbonisation in dispersed industrial places.

- **GOZERO: SME governance for net zero**

This research project aims to provide a robust evidence base to support the multi-level governance of SME decarbonisation across the four UK nations. Professor Will Eadson is leading a team of colleagues from Sheffield Hallam University, University of Oxford, and Open University to deliver this project's key objectives.

- **Pipeline or Hub? Harnessing critical energy infrastructure on the North Norfolk Coast**

A team of researchers from Sheffield Hallam University, Newcastle University and SINTEF Digital are examining the opportunities and

challenges for North Norfolk in harnessing and valorising Bacton as an infrastructural asset within the UK's broader energy transition.

- **Decarbonisation solutions for off grid communities**

The project funded by Northern Gas Network, Northern Powergrid and Energy Innovation Centre is being led by Professor Aimee Ambrose. The project focuses on homes that are completely 'off grid' (no electricity or gas connection) in the North of England.

Featured outputs



[High consumption in the UK: an exploration of secondary data \(PDF 1 MB\)](#)

Alvaro Castano Garcia, Mia Rafalowicz-Campbell, Aimee Ambrose, Anna Hawkins, Stephen Parkes



[Future Parks Accelerator evaluation: final report \(PDF 1005 KB\)](#)

Will Eadson, Julian Dobson, Nicola Dempsey, Cathy Harris and Ellie Munro

Voluntary and Community Sector



Key projects

- **Towards a Thriving Voluntary and Community Sector in South Yorkshire**

This project team of CRESR researchers is being led by Cathy Harris for Voluntary Action Rotherham. The research will seek to address the question of what the voluntary and community sector looks like in 2023.

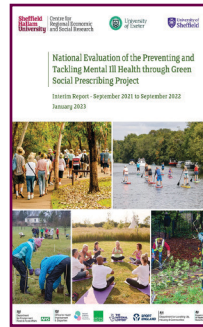
- **Evaluation of the Community Investment Enterprise Facility**

Researchers from across Sheffield Hallam University, led by CRESR's Chris Dayson, are continuing their research into community development finance institutions (CDFIs) for Big Society Capital. The aim of the project is to promote the growth and development of micro, small and medium enterprises (MSMEs). A number of outputs are available on the CRESR website.

- **National Evaluation of the Preventing and Tackling Mental Ill Health through Green Social Prescribing Programme**

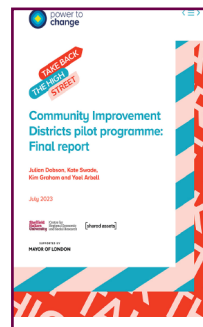
This project, led by Professor Chris Dayson, is reaching its conclusion. The Preventing and Tackling Mental Ill Health through Green Social Prescribing Project (Green Social Prescribing Project) was part of a £5.77m cross governmental initiative looking at how connecting people with nature can help well-being and improve mental health. A number of outputs published by CRESR researchers are available on the CRESR website and the final outputs will be available in the coming months.

Featured outputs



[National Evaluation of the Preventing and Tackling Mental Ill Health through Green Social Prescribing Project: Interim Report - September 2021 to September 2022 \(PDF 2.2 MB\)](#)

Annette Haywood, Chris Dayson, Ruth Garside, Alexis Foster, Becca Lovell, Kerryn Husk, Eleanor Holding, Jill Thompson, Katie Shearn, Harriet Hunt, Julian Dobson, Cathy Harris, Richard Jacques, Phil Northall, Matt Baumann, Ian Wilson



[Community Improvement Districts pilot programme: Final report \(PDF 1.7 MB\)](#)

Julian Dobson, Kate Swade, Kim Graham and Yael Arbell

Staff updates

Details of new staff members and promotions.



Dr Kathy Davies – I am an historian and postdoctoral researcher working full time on the JustHeat project. JustHeat is a pan-European interdisciplinary research project using historical methods to inform energy policy. I am leading on archival research and collecting oral histories across two case study areas in the UK: Rotherham (South Yorkshire) and Stamford (Lincolnshire). I am interested in Britain's social and political past, and how continuity and change has shaped the problems and solutions of today. My PhD focussed on the connection between news media, public opinion, and the British government's Irish policy in the early twentieth century. Before joining CRESR, I worked in heritage, research, and public engagement for the University of Manchester and the University of York.



Dr Rebecca Hamer – She joined CRESR as a Research Associate in August 2022. Her work primarily focuses on gender, complex disadvantage, trauma and unmet needs. She has evaluated Rotherham's Trauma and Resilience Service since 2018 and her current projects include a DLUHC-commissioned evaluation of the Housing Infrastructure Fund, an OHID-commissioned evaluation of the rough sleeping drug and alcohol treatment grant and a DfE-commissioned evaluation of Family Hubs. Rebecca's PhD research provided a structural and socioeconomic perspective on survival sex work and addiction in women, introducing the concepts of multidimensional trauma and the Scylla State to describe the pernicious impact of inappropriate policy and practice. In 2024 Rebecca will further her work in Rotherham and advance these novel conceptual frameworks in an Early Career Researcher Internal Fellowship exploring the development of a Trauma-Informed Community.



Dr Rachel Macrorie – She joined CRESR in February 2023 as a postdoctoral Research Associate. She is an urban and environmental geographer whose research agenda focuses on the governance and politics of urban transformations to decarbonised economies and societies. Her research has considered multiple urban domains including; the built environment, energy, water and waste services, and digital, automated and robotic infrastructures. Her current work at CRESR forms part of the South Yorkshire Sustainability Centre's work package on Just Transitions to a net zero regional economy, for which she investigates the place-based labour and skills implications of this transition for the key regional sectors of (existing) housing infrastructure and the steel industry. She couples this research with her SHRIF-funded project focused on the broader governance implications of delivering regional housing retrofit, and a small EU-funded project appraising skills development for housing energy retrofit across the devolved UK nations and exemplar EU cities. Rachel previously held research and teaching contracts at Utrecht University (The Netherlands) and The Urban Institute (University of Sheffield). In a previous life, she worked as an environmental due diligence and compliance consultant.



Dr Femi Owolade – He joined CRESR in May 2023 as a Research Associate. His role involves working across two workstreams of the NCIA project, analysing evidence of 'what works' in terms of civic impact, and observing and reflecting on an action learning process involving cohorts of university leaders. His research interests include decolonisation, marginalised people and educational inequalities. His doctoral research, which he completed at King's College London in 2022, focused on legal pluralism and British colonial rule in Nigeria. Prior to joining CRESR, Femi worked as a Researcher on ASPIRE (Accomplished Study Programme in Research

Excellence), an ambitious research project led by Sheffield Hallam University, in partnership with Manchester Metropolitan University and Advance HE. Funded by the Office for Students, the project aims to address the underrepresentation of Black and Black heritage research students.



Dr Jamie Redman – I am a Research Associate at CRESR. I am currently working on a national evaluation of the Affordable Homes Programme, commissioned by the Department for Levelling Up, Housing and Communities (DLUHC). I am also working on a solutions-focused research project exploring methods of improving job quality in South Yorkshire; as part of the Yorkshire Policy Engagement Research Network (Y-PERN) and in partnership with the South Yorkshire Mayoral Combined Authority (SYMCA). Prior to this, I worked as an ESRC post-doctoral fellow at the University of Sheffield, examining the historical development of British social security policy over the 20th/21st century and its contemporary delivery in employment services. My research interests converge around welfare reform, employment services, labour markets, poverty and unemployment.



Dr Rose Smith – She joined CRESR in February 2023 and works as a Research Fellow, primarily in the Housing and Place cluster. Over the summer she has been working on the Warm Homes Prescription project which evaluates the health impact of giving energy subsidies to people with respiratory health conditions so they can adequately heat their homes. She will also be working on the Affordable Homes Programme as part of the DLUHC call-off. Her PhD focused on housing tenure and attitudes towards social security benefits. Her broad research interests are around social housing, tenure mix and welfare benefits. In addition to this she is keen to develop her knowledge of and take part in projects about the impact of housing on health. She is a quantitative researcher who, prior to coming to CRESR, held

postdoctoral positions at University of Nottingham and Leeds working on education research projects.



Dr Jonathan Webb – What I do: I'm a Principal Research Fellow at CRESR. I primarily work across a range of projects that CRESR have been commissioned to do for the Department for Levelling Up, Housing and Communities. These projects cover a range of topics including affordable housing, supported housing, private rented housing and regeneration. Alongside this applied policy research, I co-ordinate CRESR's Housing and Place cluster. The clusters act as a conduit for academic collaboration and working within CRESR and externally.

What I'm interested in: I have a broad range of interests when it comes to academic and policy research. This has been shaped by my varied career that has spanned academia, working with government, the think tank sector and research agency work. It's also been shaped by my experience that housing cannot sit in isolation from other major policy areas – it is central to economic planning, social policy and health to name but a few.

I maintain a core interest in housing – and my current academic research interests are focused on the politics of housing and housing in a comparative context. In recent years, I have also developed a strong interest in how sustainability and net zero policies interact with housing. This has resulted in me developing a wider interest in sustainability policy beyond housing, including topics as diverse as industrial decarbonisation and energy policy. My final area of interest is focused on policymaking. I'm interested in how policymakers reason with problems and design solutions. This interest stems from my PhD research and over the years has grown into a broader interest in how policymaking can be improved. I previously worked at the UK's flagship centre for deliberative research and I'm interested in understanding how deliberation and participation can help improve policy outcomes across a range of different policy areas.

Other staff news

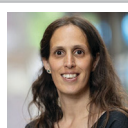
- Emma Bimpson has been promoted to Research Fellow.
- Ian Wilson has been promoted to Professor of Policy Research and Evaluation.
- In September 2022, Dawn Witherley and Anna Hawkins joined the CRESR team on secondment.

Staff list

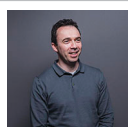
Details of our staff and their research interests or areas of expertise. Click the image to view their online profile for further information.



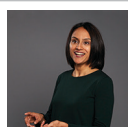
Professor Aimee Ambrose – Professor of Energy Policy. Domestic energy efficiency; energy invisibility; citizen engagement with energy policy; user experiences of environmentally sustainable housing; lived experiences of fuel poverty & policy responses; non-traditional qualitative research methods; district energy & heating; energy inefficiency in private rented sector housing.



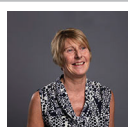
Dr Yael Arbell – Research Associate. Housing; diverse economies; racial justice; community-led projects; just transitions & other social aspects of sustainable projects.



Dr Tom Archer – Senior Research Fellow. Community-led housing; housing affordability; housing supply; the UK housebuilding industry; community ownership of assets.



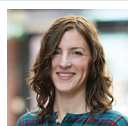
Nadia Bashir – Senior Research Fellow. Co-production in research & evaluation; exploring different methodological approaches to engaging those groups that are seldom heard; researching the lived experiences of those seldom heard, in particular, BAME experiences of multiple disadvantage.



Elaine Batty – Research Fellow. Qualitative research methods; visual methods; biographical interviewing; vulnerable people & families with complex needs; homelessness; unemployment.



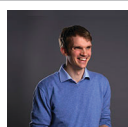
Professor Christina Beatty – Professor of Applied Economic Geography. Britain's older industrial areas, former coalfields & seaside towns; welfare reform; geography of hidden unemployment; economic inactivity & incapacity-related benefits; productivity differences between places & industries; Housing Benefit system in the private rented sector & supported housing; labour market dynamics & spatial analysis; analysis of large scale secondary & administrative datasets.



Dr Emma Bimpson – Research Fellow. Welfare governance; housing & marginalisation; women & family homelessness; housing, health & social care.



Dr Richard Crisp – Reader. Poverty social & spatial inequalities; worklessness, welfare-to-work & welfare reform; urban regeneration; housing & planning; inclusive growth; sub-national governance.



Chris Damm – Research Fellow. The third sector, its funding & role in public service delivery; charity data & data infrastructure; social investment; employment services; quantitative methods (modelling, mapping, data visualisation, programming in R, web-scraping, surveys).



Dr Kathy Davies – Research Associate. Sustainability; domestic energy efficiency; relationship between politics, the press, policy & people.



Professor Chris Dayson – Professor of Voluntary Action, Health & Wellbeing. The role of the voluntary & community sector in the governance & implementation of public services; social prescribing & asset-based approaches to health; social investment, including Social Impact Bonds (SIBs); social & public innovation; social & public value.



Dr Julian Dobson – Senior Research Fellow. People, place & community; urban green spaces; institutional & societal change; low- carbon society.



Professor Will Eadson – Professor of Urban and Regional Studies. Economic geographies of zero carbon transitions; employment & skills implications of zero carbon transition; place-based just transition; governance & democracy in sustainability transitions; engaging & supporting Small & Medium Enterprises (SMEs) in zero carbon transitions.



Professor Ed Ferrari – Director. Housing market analysis; housing policy & strategy; strategic spatial planning; Geographical Information Systems & spatial analysis; transport policy & planning.



Professor Del Fletcher – Professor of Labour Market Studies. Worklessness & labour market disadvantage; labour market policy & strategy; welfare reform & it's impact on disadvantaged groups; severe & multiple disadvantage; offender employment interventions; peer support & peer mentoring in custodial & community settings.



Professor Steve Fothergill – Professor. Urban & regional economic analysis; regional policy; business & industry; Europe; labour markets; joblessness; local area studies; energy policy; benefits system; regeneration; tourism.



Jan Gilbertson – Senior Research Fellow. Energy poverty & energy vulnerability; housing & health; healthy ageing; psychosocial determinants of health; health impact of cold homes & fuel poverty on vulnerable groups; impact of housing investment on health & quality of life; social costs & benefits of housing improvements; impact of energy efficiency measures on health & behaviour of vulnerable groups; collaborative & multi-disciplinary projects; qualitative & quantitative research methods; project management.



Dr Stephen Green – Senior Research Fellow. Housing policy & practice; private rented sector housing issues; affordable housing in rural areas; homelessness; service transformation in LAs; evaluation; qualitative research.



Gail Hallewell – Research and Knowledge Exchange Manager. Contract management; financial planning; project monitoring; tender processing.



Dr Rebecca Hamer – Research Associate. Trauma-Informed Research & Practice; neoliberalism & the consequences for women; survival sex working; women's experience of addiction & the drug treatment industry; gender & marginalisation; qualitative research.



Catherine Harris – Research Fellow. Voluntary & community sector; exploring the needs & experiences of people who may be vulnerable or marginalised.



David Leather – Research Associate. Quantitative analysis; data visualisation; GIS & special analysis; housing; regeneration; area profiling; labour market analysis.



Dr Rob Macmillan – Principal Research Fellow. Third Sector; voluntary & community action; public service markets; community development; qualitative longitudinal methods.



Rachel Macrorie – Research Associate. Governance of urban sustainability transformations; just transitions - labour, skills and (re)training - in the net zero transition; political economy of place-based sociotechnical infrastructural change; feminist economic geographies & alternative economies; smart & platform urbanism, urban automation & robotics; everyday (un)sustainable consumption practices.



Dr Lindsey McCarthy – Research Fellow. Experiences of homelessness & multiple disadvantage; trauma & trauma-informed approaches; marginalised groups & identities; qualitative data collection & analysis.



Dr Ellie Munro – Research Associate. Voluntary action and its role in community support and welfare systems at a local and national level.



Dr Phil Northall – Research Associate. Decarbonisation of industry & energy; just transition to low carbon economies.



Dr Femi Owolade – Research Associate. Power; marginalised people; educational inequalities.



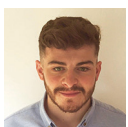
Dr Stephen Parkes – Research Fellow. Transport; energy; just transitions; inclusive growth; active travel; high consumers of energy & transport; autonomous vehicles.



Dr Sadie Parr – Senior Research Fellow. Multiply disadvantaged individuals and families; interventions for those with multiple needs; the role of new social care professions & inter-professional working; governing practices & processes in social policy; homelessness.



Professor Sarah Pearson – Director of the Social and Economic Research Institute. Evaluation; social impact; neighbourhood & community regeneration; community capacity and engagement; lone parents; children & young people; voluntary & community sector.



Dr Jamie Redman – Research Associate. Welfare reform, employment services, labour markets, poverty & unemployment.



Dr Kesia Reeve – Principal Research Fellow. Women and housing; homelessness; the housing needs of marginalised groups & those with ‘complex needs’.



Elizabeth Sanderson – Senior Research Fellow. Welfare, labour markets & employment; project & programme evaluation; youth transitions & youth unemployment; survey design & implementation; setting up & managing monitoring templates and systems.



Emma Smith – Research and Innovation Officer. Data protection; information governance lead, ethics, financial management; event management.



Rose Smith – Research Fellow. Housing; welfare; comparative quantitative analysis.



Dr Elizabeth Speake – Research Associate. Social security policy & practice; conceptualisations of violence; austerity & social harm; gender-based violence & abuse; trauma, disability & mental health; homelessness.



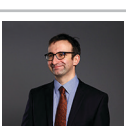
Emerald Tofte – Senior Research and Innovation Administrator. Tender processing; project support & monitoring; event support; CRESR Seminar Series; video editing; finance support; organising interviews & transcription.



Sarah Ward – Research and Innovation Officer. Document formatting, proofreading & design; website management & maintenance; People, Place & Policy journal manager; REF administrator.



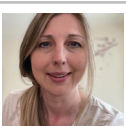
Dr Jonathan Webb – Principal Research Fellow. The politics of housing; homelessness; poverty & housing; housing affordability; decarbonisation of homes; deliberative research methods; culture Political Economy approaches; sustainability policy; housing & land policy in an international & comparative context.



Professor Peter Wells – Professor of Public Policy Analysis and Evaluation. Evaluation & evidence based policy making; social investment & the voluntary and community sector; regional & urban policy; youth unemployment; community & locally based climate action.



Professor Ian Wilson – Deputy Director and Professor of Policy Research and Evaluation. Measuring & valuing impact of policy interventions; provision & affordability of housing; impact of place-based interventions targeted at social & economic inequalities & disadvantage.



Dawn Witherley – Research Culture Manager. Quality of life; well-being; social cultural & economic inclusion.

Our clients

An overview of some of our clients over the last year and their experience.

Government

- Department for Environment, Food & Rural Affairs (DEFRA)
- Department for Health and Social Care (DHSC)
- Department for Transport (DfT)
- Doncaster Chamber of Commerce
- Hull City Council
- Humber and East Yorkshire LEP

Research funders

- Formas
- Forte
- EPSRC Infrastructure for Port and Coastal Cities and Towns (iPACT) Network
- National Institute for Health and Care Research (NIHR)
- Research England
- Swedish Research Council
- The Arts and Humanities Research Council (AHRC)
- The Collaboration of the Humanities and Social Science in Europe (CHANSE)
- The Nationwide Foundation
- UKRI UK Energy Research Centre

Charities and foundations

- CATCH
- Child Poverty Action Group
- Church Army
- Consortium of Voluntary Adoption Agencies
- Healthwatch Lambeth
- Home-Start UK
- Local Trust
- Power to Change
- Nuffield Foundation
- ROSA
- The Humber Learning Consortium
- Voluntary Action Rotherham

Sector bodies

- Battersea Dogs & Cats Home
- Big Society Capital
- South Yorkshire Housing Association (SYHA)
- University of Huddersfield

“

Working with the team on a project about the value of federated charities has been a real pleasure. The team brought professionalism, insight and commitment to our project throughout and colleagues from various federated charities have all been impressed with the result of the work.

”

Peter Grigg, Home-Start UK

News and events

Here is a selection of CRESR research news coverage and events our staff have presented at over the last year.

News

- Research from **Professor Steve Fothergill** and **Professor Christina Beatty** which found that there is no productivity gap between the rest of the UK and London has been mentioned in the [Guardian](#) (Aug 2022).
- **Professor Aimee Ambrose** offered her expertise in a [National World article](#) discussing what Keir Starmer's nationalised energy plan could mean for people, bills and green energy (Sept 2022).
- **Professor Aimee Ambrose** participated in a podcast [speaking to Local Zero](#) about fuel poverty and the Government's response to the energy crisis (Oct 2022).
- **Professor Steve Fothergill** has written a piece in the [Yorkshire Post](#) regarding Investment Zones (Oct 2022).
- Architects' Journal spoke to **Dr Julian Dobson** for their [piece on Sheffield](#) (Nov 2022).
- **Professor Steve Fothergill** is quoted in [Herald Scotland](#) about long COVID and the labour market (Nov 2022).
- Research by **Dr Kesia Reeve** and **Dr Emma Bimpson** for Shelter was featured on the [BBC News website](#) (Jan 2023).
- **Dr Julian Dobson** wrote a piece for the [Yorkshire Post](#) about the decline of the high-street, and how community-based businesses could help to breathe new life into towns and cities (Jan 2023).
- **Dr Tom Archer** and **Professor Ian Cole's** work was mentioned in this [Business Telegraph article](#) (Feb 2023).
- **Professor Steve Fothergill** (Sheffield), organised a symposium at the Royal Geographical Society conference. They presented findings from the Future Parks Accelerator project (Aug 2022).
- **Professor Christina Beatty** took part in the closing panel for the Government Geography Profession and CURDs run policy stream at this year's Royal Geographical Society/Institute for British Geographers in Newcastle (Sept 2022).
- **Professor Chris Dayson** and **Professor Ian Wilson** took part in a round table hosted by the National Centre for Creative Health and chaired by Lord Howarth of Newport on the possibilities and challenges associated with demonstrating the value of arts and other aspects of the creative economy to health and wellbeing (Sept 2022).
- **Professor Ian Wilson** joined Community Renewal's Lifting Neighbourhoods Together conference to deliver a conference speech, facilitate a workshop and participate in the closing panel discussion (Oct 2022).
- **Professor Steve Fothergill** appeared in front of the Levelling Up Select Committee in Westminster as part of their inquiry into levelling up funding (Nov 2022).
- **Dr Yael Arbell** presented at a workshop on cohousing organised by UK Cohousing Network and Housing 21 (Nov 2022).
- **Dr Julian Dobson** chaired a public event on how to bring together researchers, civic entrepreneurs, local authorities and community partners. This was part of 'The High Street of Exchanges' exhibition in Sheffield (Nov 2022).
- **Dr Lindsey McCarthy** presented her research on trauma-informed approaches in homelessness practice at the honorary doctorate engagement event for Anne Longfield CBE, former Children's Commissioner for

Events

- **Dr Julian Dobson, Professor Will Eadson** and Dr Nicola Dempsey (University of

England and current Chair of the Commission on Young Lives (Nov 2022).

- **Cathy Harris**, Lorna Dowrick and **Chris Damm** presented their research on mapping the women and girls' sector, at the VSSN conference, on 'Women and Girls in the Voluntary Sector'. They also presented at the Association of Charitable Funders' conference in London on the same topic (Nov 2022).
- **Dr Tom Archer** presented at one of the SHU-led Festival of Social Science events. This focused on the potential for community ownership in Sheffield, and is linked to the development of Sheffield Community Land Trust (Nov 2022).
- **Dr Yael Arbell** was invited to the launch event of the new UK Cohousing Guide, to present the Diversity and Inclusion section which she co-authored with the UK Cohousing's diversity and inclusion working group (Nov 2022).
- **Professor Christina Beatty** presented on the Real Level of Unemployment: Challenges for Employment Support to staff based at Opportunities Sheffield (Dec 2022).
- **Professor Christina Beatty** presented on Economic Inactivity and Hidden Unemployment to the Sheffield Teacake Club. The Teacake Club provides a forum to share policy and practice in delivering employment support projects across the city (Dec 2022).
- **Professor Christina Beatty** was invited to give the Phil Hann's Memorial Lecture at this year's National Association of Welfare Rights Advisors (NAWRA) annual winter conference (Dec 2022).
- **Dr Yael Arbell** gave a lecture on the theory and practice of diversity in community-led housing to master students at the University of Leeds Sustainable Cities MSc course (Jan 2023).
- **Professor Christina Beatty** gave a presentation to the Data, Analytics and Intelligence for South Yorkshire (DAISY) network on the subject of Economic Inactivity and Inclusion (Jan 2023).
- **Dr Stephen Parkes** and **Professor Ed Ferrari** convened a session as part of the Regional Studies Association (RSA) Regions Cities Industry Webinar Series (Jan 2023).
- **Dr Yael Arbell** presented at the Housing LIN summit as part of a panel on the People + Place = Connected Communities session. The talk title was 'the bright side and the dark side of participation in cohousing' (Feb 2023).
- **Professor Aimee Ambrose** and **Jan Gilbertson** organised a session on damp and mould which is a serious threat to health and a growing problem in light of underheating during the winter. The session improved participants understanding of how damp and mould are caused, the associated health impacts and how to tackle the problem (Feb 2023).
- **Professor Ian Wilson** presented a paper at the Housing Studies Association conference entitled 'Trapped! The commission on park home sales' (Mar 2023).
- **Dr Kathy Davies** presented at the inaugural 'History and Archives in Practice' Conference at the Institute of Historical Research, Senate House, London, representing the JUSTHEAT team (Mar 2023).
- **Dr Phil Northall** and **Professor Will Eadson** presented on their GOZERO project at University of Oxford Environmental Change Institute (Apr 2023).
- **Professor Will Eadson** presented on emerging findings from the GOZERO project at a University of Derby event on Delivering net zero business support in a post-ERDF era (Apr 2023).
- **Professor Will Eadson** presented on industrial decarbonisation research to the Carbon Capture and Storage Association (Apr 2023).
- **Professor Christina Beatty** gave a presentation on the DLUHC and DWP research on Supported Housing Research to the NHS Confederation's National Mental Health and Housing Forum (Apr 2023).
- **Professor Christina Beatty** gave a presentation for the Cardiff University School of Geography and Planning Seminar series on the Real Level of Unemployment (May 2023).
- **Dr Yael Arbell** gave a presentation on migration and community-led housing at LSE for the final workshop of MICOLL, an international study of collaborative housing and migration (May 2023).
- **Dr Stephen Parkes, Dawn Witherley** and **Dr Yael Arbell** delivered a training session to PhD students from the White Rose Doctoral Training Partnership (Jun 2023).

People, Place and Policy (PPP)

Background

PPP is an open access journal and we invite researchers, policy makers and practitioners to discuss and disseminate research, reflection and ideas related to contemporary debates within all aspects of social policy. To learn more about the journal, read articles and join our mailing list, please visit the [PPP official website](#).

What have we been up to?

Over the 2022/23 academic year we have published 33 articles. These articles are split over four different issues (as well as Early View articles):

- **Vol 16, Issue 1** was a [Special Issue on 'Decarbonisation and Energy Poverty'](#). We would like to thank our Guest Editors for collating a fantastic collection of papers and to the authors for their timely contributions to the journal.
- **Volume 16, Issue 2** contained a [Special Section on Levelling Up](#) and these papers responded to different aspects of the Government's Levelling Up White Paper (LUWP) published in February 2022. This issue also contains two research articles addressing ['digital inclusion in the future energy system'](#) as well as ['factors influencing adults with learning difficulties being warm and well at home.'](#)
- **Volume 16, Issue 3** contained a [special section](#) featuring three papers presented at the 2021 PPP conference about domestic abuse services, housing and stigmatisation and retrofit in Glasgow tenements. The other papers included a research article about [community food projects](#) and a book review of Ross Fergusson and Nicola Yeates' book 'Globalising youth unemployment' (the authors of this book presented on this topic at a [2022 CRESR Seminar](#)).
- **Volume 17, Issue 1** published earlier this year contained three research articles covering

['Community Protection Notices'](#), ['Nepali labour migrants'](#) and ['local authority austerity'](#). The issue also contained two book reviews on recently published books.

Annual conference 2023

The PPP Annual Conference, held each summer, was hosted by CRESR at Sheffield Hallam University's City Campus. Taking place on the 21st June, the conference theme was 'Justice during crisis.'

The conference attracted a diverse audience from policy, practice, and academia with a day of engaging sessions. Sessions covered a range of topics, covering many key issues including the ecological crisis, cost of living and how COVID-19 has affected our communities. You can see our full programme of speakers as well as abstracts and slides on our interactive [conference programme](#).

Finally

The PPP Editorial Team would like to take this opportunity to thank all our authors, reviewers and conference speakers this year - your support of the journal is really valued. We would also like to extend a particular thanks to Dr Ellen Bennett who has been an Editorial Team member for many years, but who has now moved on to pursue other opportunities.

The next year promises to be exciting for the journal as we are soon to launch our new website and will also release a series of podcasts over the next year focusing on conversations with some of our authors.

The PPP Editorial Team



For updates on these new developments and general news about the journal, please do follow our new company page on LinkedIn

CRESR seminar series

What is it?

The CRESR seminar series brings together academics, policy experts and sector-based professionals to present and discuss key issues across a range of areas linked to [CRESR's areas of interest](#). Seminars are attended by academics, students and practitioners and are open to anyone with an interest in the subject, providing opportunities for learning, discussion and networking.

The 2022/23 programme

The 2022/23 CRESR seminar series featured seven seminars which were predominantly hybrid sessions (in-person and online). The seminars explored a range of themes including community-led housing, homelessness prevention, unpicking high consumption, and nature on prescription for health and wellbeing.

The series was well-attended with between 30 and 70 attending each seminar, with roughly equal numbers attending in-person and online. Furthermore, the seminars have been viewed 200 times on the [CRESR YouTube channel](#).

Our seminars

- **Shutting up shop: hardship and hope on Britain's high streets**
Speaker: Julian Dobson
- **Panel session: Community-led housing - Lessons from research and practice**
Speakers: Philippa Hughes, Tom Moore, Yael Arbell, Tom Archer
- **Foundational liveability and the cost-of-living crisis**
Speaker: Karel Williams
- **Moving homelessness prevention upstream: critical reflections on the development and implementation of a promising school-based intervention**
Speaker: Peter Mackie

- **Why is it so hard to consume less? Unpicking high consumption and the factors locking it in**
Speakers: Kirsten Gram-Hanssen, Anna Hawkins, Marta Baltruszewicz
- **Nature on prescription for health and wellbeing**
Speakers: Ruth Garside, Becca Lovell
- **Ageing well for all: How to ensure older citizens from all communities enjoy the benefits of living longer and living better**
Speaker: Abdul Ravat

View abstracts, speaker biographies and recordings from the 2022/23 programme on the [CRESR website](#).



Finally

Thank you to everyone who supported the CRESR seminars this year: helping to set up and run the sessions, suggesting speakers, promoting the series, and chairing and attending sessions. Thank you also to all the speakers who helped make it a really engaging series, with interesting presentations and discussions across the sessions.

The 2023/24 programme is available on the [CRESR website](#).

Publications

Reports

Arbell, Y., Archer, T., Moore, T., Mullins, D. and Rafalowicz-Campbell, M. (2022) [Homes in Community Hands: Year Three evaluation report](#). Power to Change.

Archer, T. (2023) [Lessons in community led housing: \(1\) for funders and policymakers](#). Power to Change.

Bashir, N., Dayson, C. and Munro, E. (2023) [Evaluation of the Black Thrive Lambeth Employment Project: Briefing for System Stakeholders](#). Black Thrive Global CIC.

Bashir, N., Dayson, C. and Munro, E. (2022) [The Black Thrive Lambeth Employment Project: A Summative Assessment of Impact and Systems Change](#). Healthwatch Lambeth.

Bashir, N., Dayson, C. and Munro, E. (2022) [The Black Thrive Lambeth Employment Project: Summary of Key Findings About Impact and Systems Change](#). Healthwatch Lambeth.

Beatty, C., Crisp, R., Ferrari, E., Gore, T. and McMullan, J., (2023) [Inclusion Plan Evidence Base](#). South Yorkshire Combined Authority.

Bimpson, E., Dayson, C., Ellis Paine, A., Gilbertson, J., Kara, H. and Leather, D. (2023) [Evaluation of the Leeds Neighbourhood Networks: Understanding equity of offer, access and resources](#). Centre for Ageing Better.

Bimpson, E., Hickman, P. and Reeve, K. (2022) [Perspectives on tenancy sustainment: insights from national stakeholder interviews](#). Nuffield Foundation.

Carter, C., Clark, L., Coldwell, M., Hatton, A., Pearson, S., Reaney-Wood, S., Willis, B. and Wilson, I. (2022) [Family hubs evaluation interim report: Doncaster](#). Department for Education.

Castano Garcia, A., Rafalowicz-Campbell, M., Ambrose, A., Hawkins, A. and Parkes, S. (2023) [High consumption in the UK: an exploration of secondary data](#). Sheffield Hallam University.

CRESR (2022) [CRESR Annual Report 2021-22](#). Sheffield Hallam University.

Damm, C., Dowrick, L. and Harris, C. (2023) [Mapping the UK Women and Girls Sector and its Funding: Where Does the Money Go?](#) ROSA.

Dayson, C. and Damm, C. (2022) [Evaluation of the Community Investment Enterprise Facility: Interim Report \(2019-2021\)](#). Big Society Capital.

Dayson, C., Damm, C., Gilbertson, J. and Leather, D. (2023) [Towards an understanding of their contribution to health and care costs and resources](#). Centre for Ageing Better.

Dobson, J. (2022) [Community businesses and high streets: 'taking back' and leading forward](#). Power to Change.

Dobson, J., Swade, K., Graham, K. and Arbell, Y. (2023) [Community Improvement Districts pilot programme: Final report](#). Power to Change.

Eadson, W., Dobson, J., Dempsey, N., Harris, C. and Munro, E. (2022) [Future Parks Accelerator evaluation: final report](#). National Lottery Heritage Fund and National Trust.

Eadson, W., Dobson, J., Dempsey, N., Harris, C. and Munro, E. (2022) [Future Parks Accelerator: Key findings and recommendations](#). National Lottery Heritage Fund and National Trust.

Haywood, A., Dayson, C., Garside, R., Foster, A., Lovell, B., Husk, K., Holding, E., Thompson, J., Shearn, K., Hunt, H., Dobson, J., Harris, C., Jacques, R., Northall, P., Baumann, M. and Wilson, I. (2023) [National Evaluation of the Preventing and Tackling Mental Ill Health through Green Social Prescribing Project: Appendices to Interim Report - September 2021 to September 2022](#). Defra.

Haywood, A., Dayson, C., Garside, R., Foster, A., Lovell, B., Husk, K., Holding, E., Thompson, J., Shearn, K., Hunt, H., Dobson, J., Harris, C., Jacques, R., Northall, P., Baumann, M. and Wilson, I. (2023) [National Evaluation of the Preventing and Tackling Mental Ill Health through Green Social](#)

[Prescribing Project: Briefing Document - Interim Report - September 2021 to September 2022.](#) Defra.

Haywood, A., Dayson, C., Garside, R., Foster, A., Lovell, B., Husk, K., Holding, E., Thompson, J., Shearn, K., Hunt, H., Dobson, J., Harris, C., Jacques, R., Northall, P., Baumann, M. and Wilson, I. (2023) [National Evaluation of the Preventing and Tackling Mental Ill Health through Green Social Prescribing Project: Interim Report - September 2021 to September 2022.](#) Defra.

Haywood, A., Dayson, C., Garside, R., Foster, A., Lovell, B., Husk, K., Holding, E., Thompson, J., Shearn, K., Hunt, H., Dobson, J., Harris, C., Jacques, R., Northall, P., Baumann, M. and Wilson, I. (2023) [National Evaluation of the Preventing and Tackling Mental Ill Health through Green Social Prescribing Project: Interim Report Summary - September 2021 to September 2022.](#) Defra.

Hickman, P., Reeve, K., Bimpson, E., Lamb, M., Manzi, T. and Speake, B. (2023) [Engaging with tenants to sustain their tenancies: insights from interviews with case study stakeholders.](#) Nuffield Foundation.

Hickman, P., Reeve, K., Bimpson, E., Lamb, M., Manzi, T. and Speake, B. (2023) [Engaging with tenants to sustain their tenancies: insights from interviews with case study stakeholders – Summary.](#) Nuffield Foundation.

Macmillan, R., Leather, D. and Stuart, J. (2022) [Connecting Locally: local voluntary and community sector infrastructure in England.](#) NAVCA.

Manzi, T. and Bimpson, E. (2022) [Drivers of Rent Arrears in Social Housing: an Evidence Review.](#) Nuffield Foundation.

Manzi, T. and Bimpson, E. (2022) [Drivers of Rent Arrears in Social Housing: an Evidence Review - Summary.](#) Nuffield Foundation.

Marson, J., Dickinson, J. and Parkes, S. (2023) [Autonomous vehicle use in practice: is the UK ready?](#) Property Research Trust.

McCarthy, L. (2022) [Trauma-informed approaches in homelessness practice: an exploration of practitioner understandings and implementation.](#) Sheffield Hallam University.

McCarthy, L., Ambrose, A., Davies, K., Jigla, G., Kilpeläinen, S., Palm, J., Pelsmakers, S., Shahzad, S., Shaw, B., von Platten, J. and Vornicu, A. (2023) [Domestic Heating Transitions: A Literature Review.](#) CHANSE.

Munro, E., Dayson, C. and Bashir, N. (2023) [Evaluation of the Black Thrive Lambeth Employment Project: Briefing for Funders.](#) Black Thrive Global CIC.

Sanderson, E. and Wilson, I. (2022) [This-Ability: SROI analysis.](#) The Humber Learning Consortium.

Blogs

Ambrose, A. (2023) [Forgotten residents: considering the impact of retrofit on biodiversity.](#) Cache, 31 May 2023.

Ambrose, A. (2023) [Our changing heating systems: getting to the hearth of the matter.](#) UK Collaborative Centre for Housing Evidence, 19 April 2023.

Ambrose, A. (2022) [Energy crisis: the UK is still heading for widespread fuel poverty – despite the government's price cap.](#) The Conversation, 12 September 2022.

Ambrose, A. and Raslan, R. (2022) [One in four homes is 'hard to decarbonise' – without help their inhabitants could get stuck in fuel poverty.](#) The Conversation, 13 December 2022.

Beatty, C. (2023) [There is no quick fix to the economic inactivity problem.](#) SIPS blog, 31 March 2023.

Bimpson, E., Hickman, P. and Reeve, K. (2022) [Blog: Tenancy sustainment in social housing: a perfect storm?](#) Holding on to Home, 14 November 2022.

Dobson, J. (2023) [Plan will put everyone in England within 15 minutes of green space – but what matters is justice not distance.](#) The Conversation, 2 February 2023.

Dobson, J. (2022) [What can community businesses do for our high streets?](#) Power to Change, 10 August 2022.

Fothergill, S. (2023) [THE NEW INVESTMENT ZONES: An Assessment of their likely impact.](#) SIPS blog, 21 April 2023.

Fothergill, S. (2023) [THE BROWN COMMISSION REPORT – An assessment of its proposals for local and regional economic development](#). SIPS Blog, 9 January 2023.

Fothergill, S. (2023) [INVESTMENT ZONES – What are they, and will they work?](#) SIPS Blog, 14 October 2023.

Gilbertson, J. (2023) [Fuel poverty makes you sick – so why has nothing changed since I was a child living in a cold home?](#) The Conversation, 14 March 2023.

Gilbertson, J. (2023) [Why has nothing changed since I was a kid living in a cold home?](#) Fuel Poverty Research Network.

Nelson, C. and Archer, T. (2022) [Putting Homes in Community Hands](#). Power to Change, 7 September 2022.

Norman, H., Smith, R. and Davies, J. (2023) [Supporting fathers to get more involved at school](#). Paternal Involvement & its Effects on Children's Education.

Academic outputs

Bashir, N. (2023) [Community Gatekeepers: Power, Pitfalls and Possibilities When Recruiting and Researching Black, Asian, and Minority Ethnic \(BAME\) Participants](#). The Qualitative Report (TQR), 28 (5), pp. 1501-1509.

Beatty, C. and Fothergill, S. (2023) [The persistence of hidden unemployment among incapacity claimants in large parts of Britain](#). Local Economy 38 (1).

Bull, R. and Eadson, W. (2023) [Who has the power? Citizen engagement in district heating schemes in the UK and Sweden](#). Energy Policy, Volume 177.

Chapman, M., Gilbertson, J., Bradley, J., Damm, C., Farnsworth, V., Ferguson, A., Owen, A., Stafford, B., Taylor, B., Tod, A. and Wolstenholme, D. (2022) [Being warm being happy: understanding factors influencing adults with learning disabilities being warm and well at home with inclusive research](#). People, Place and Policy, 16 (2), 193-215.

Coldwell, M., Pearson, S. and Wilson, I. (2022) [Evaluating local system change using a comparative maturity matrix](#). Evaluation, 28 (4), 446-465.

Crisp, R. (2022) [Levelling Up through private sector 'wealth creation': some thoughts on the neglect of alternative approaches](#). People, Place and Policy, 16 (2), 157-162.

Crisp, R. and Waite, D. (2022) [Building Back Better in urban contexts through a dual ethics of justice and care](#). Urban Geography.

Damm, C. and Kane, D. (2022) [Classifying UK charities' activities by charitable cause: a new classification system](#). Voluntary Sector Review.

Dayson, C., Bimpson, E., Ellis Paine, A., Gilbertson, J. and Kara, H. (2022) [Voluntary Sector Organisations, Older People and Healthy Ageing During the COVID-19 Pandemic](#). In: Rees, J., Macmillan, R., Dayson, C., Damm, C. and Bynner, C. (eds.) COVID-19 and the Voluntary and Community Sector in the UK: Responses, Impacts and Adaptation. Policy Press.

Dobson, J. (2022) [Boosterism and belonging: 'pride in place' and the levelling-up agenda](#). People, Place and Policy, 16 (2), pp. 170-176.

Dobson, J. (2022) Public Realm, In: Giddings, R. and Rogerson, R. (eds) [The future of the city centre: Global perspectives](#). Routledge.

Dobson, J. and Ferrari, E. (2023) [Bringing Civic Impact to Life](#). In: Dobson, J. and Ferrari, E. (eds) Rethinking University-Community Policy Connections. Palgrave Macmillan, pp. 163-173.

Dobson, J. and Ferrari, E. (2023) [Reframing the Civic University: An Agenda for Impact](#). Springer.

Dobson, J. and Ferrari, E. (2023) [Why the Time Is Right for a Civic Turn](#). In: Dobson, J. and Ferrari, E. (eds) Rethinking University-Community Policy Connections. Palgrave Macmillan, pp. 1-24.

Eadson, W. and van Veelen, B. (2023) [Green and just regional path development](#). Regional Studies, Regional Science.

Eadson, W., van Veelen, B. and Backius, S. (2023) [Decarbonising industry: a places-of-work research agenda](#). The Extractive Industries and Society, 15.

- Fletcher, D. (2023) [Book review - Fortress London: Why we need to save the country from its capital](#). *People, Place and Policy*, 17 (1), pp. 53-56.
- Goodchild, B. (2022) [Replanning the central area of Wakefield, West Yorkshire: culture and regeneration, 1990–2021](#). *Planning Perspectives*.
- Gore, T. and Wells, P. (2022) [Levelling Up: a missed opportunity to reframe the role of investment in physical capital](#). *People, Place and Policy*, 16 (2), pp. 146-156.
- Hampton, S., Blundel, R., Eadson, W., Northall, P. and Sugar, K. (2023) [Crisis and opportunity: transforming climate governance for SMEs](#). *Global Environmental Change*, 82.
- Harris, C., Lewis, A., Griffiths, R. and Anderson, L. (2023) [Making meaningful recommendations for policy and practice: reflections from the evaluation of Ask and Act](#). *Social Research Practice*, 13, pp. 18-27.
- Macrorie, R., Marvin, S., Smith, A. and While, A. (2022) [A Common Management Framework for European Smart Cities? The Case of the European Innovation Partnership for Smart Cities and Communities Six Nations Forum](#). *Journal of Urban Technology*, 30 (3), pp. 63-80.
- McCarthy, L. and Parr, S. (2022) [Is LGBT homelessness different? Reviewing the relationship between LGBT identity and homelessness](#). *Housing Studies*.
- Palm, J. and Ambrose, A. (2023) [Exploring energy citizenship in the urban heating system with the 'Walking with Energy' methodology](#). *Energy, Sustainability and Society*, 13.
- Papin, M., Westman, L., Macrorie, R., Azizi, A.S., Dede, M., Greenwalt, J., Johnson, I. and Summers, B. (2023) [Compound urban crises in global environmental politics](#). In: P. Dauvergne and L. Shipton *Global Environmental Politics in a Turbulent Era*. Edward Elgar Publishing.
- Parkes, S. and Ferrari, E. (2022) [Connected and autonomous vehicles: the challenges facing cities and regions](#). *Regional Studies Policy Impact Books*, 4 (1).
- Pearson, S., Lindsay, C., Batty, E., Cullen, M. and Eadson, W. (2023) [Relational approaches to employability](#). *Journal of Education and Work*, 36 (4), pp. 270-283.
- Penton, H., Dayson, C., Hulme, C. and Young, T. (2022) [A qualitative investigation of older adults' conceptualisation of quality of life and a think-aloud content validation of the EQ-5D-5L, SF-12v2, WEMWBS and ONS-4](#). *Value in Health*, 25 (12), pp. 2017-2027.
- Penton, H., Dayson, C., Hulme, C. and Young, T. (2022) [An Investigation of Age-Related Differential Item Functioning in the EQ-5D-5L Using Item Response Theory and Logistic Regression](#). *Value in Health*, 25 (9), pp. 1566-1574.
- Purvis, B., Keding, H., Lewis, A. and Northall, P. (2023) [Critical reflections of postgraduate researchers on a collaborative interdisciplinary research project](#). *Humanities and Social Sciences Communications*, 10.
- Raslan, R. and Ambrose, A. (2022) [Solving the Difficult Problem of Hard to Decarbonise Homes](#). *Nature Energy*, 7, pp. 675-677.
- Redman, J., Fletcher, D.R., White, R. and McCarthy, L. (2022) ['You had to be the detective': implementing workfare in British employment services](#). *Journal of Social Policy*.
- Rees, J., Macmillan, R., Dayson, C., Damm, C. and Bynner, C. (2022) [COVID-19 and the Voluntary and Community Sector in the UK: Responses, Impacts and Adaptation](#). Policy Press.
- Rees, J., Taylor, R. and Damm, C. (2022) [Opening the 'black box': Organisational Adaptation and Resistance to institutional isomorphism in a prime-led employment services programme](#). *Public Policy and Administration*.
- Rogers, M., Lockwood, K., Speake, B. and Campbell, F. (2023) [PROTOCOL: domestic abuse interventions for mothers in or exiting prison: an evidence and gap map](#). *Campbell Systematic Reviews*, 19 (1).
- Woodward, A., Patmore, B., Cliff, G. and Dayson, C. (2022) [The value and contribution of BAME-led organisations during and Beyond COVID-19](#). In: Rees, J., Macmillan, R., Dayson, C., Damm, C. and Bynner, C. (eds.) *COVID-19 and the Voluntary and Community Sector in the UK: Responses, Impacts and Adaptation*. Policy Press.

PhD students 2022/2023

Completed during 22/23 academic year

Name	Supervisors	Thesis title
Lorna Dowrick	Chris Dayson, Rob Macmillan and Chris Damm	The representation of women's charitable organisations 2008 to 2020 and the implications for gender equality
Rebecca Hamer	Del Fletcher, Kesia Reeve and Ed Ferrari	The Scylla State: An Alternative Understanding of Survival Sex Work and Addiction
Larissa Povey	Del Fletcher, Richard Crisp and Tony Gore	Governing Marginalised Women: Gendered Dimensions of the Carceral Assistential Net

New starters

Name	Supervisors	Thesis title
Elpida Epostolopoulou	Will Eadson and Phil Northall	Understanding and Engaging with Small and Medium Enterprises (SMEs) as Participants in a Just Transition
Leanna Fairfax	Kesia Reeve, Lindsey McCarthy and Emma Bimpson	Women's experiences of privately rented temporary accommodation: moving from policy to the everyday
Florence Gaughan	Sarah Pearson and Andrea Wigfield	A Qualitative Exploration of Loneliness and Parenthood Among Young Mothers
Amy Grace	Stephen Parkes, Aimee Ambrose and Anna Hawkins	Locked in: An exploration of High Consumption practises in the UK
Rowan Mackay	Tom Archer and Cristina Cerulli	Partnerships for change: Leveraging collective agency among at-risk communities in the production of housing in London
Alex Norton	Lindsey McCarthy and Sadie Parr	Understanding Trauma Through the Experience of Homelessness: Analysing Life Histories of the Rough Sleeping Homeless
Nicola Silverleaf	Peter Wells and Ellen Bennett	Why do charities invest capital for income rather than to advance mission?

Current students

Name	Supervisors	Thesis Title
Oluwaferanmi Olaoluwa Adeyemo	Peter Wells, Chris Damm and Elizabeth Sanderson	The Changing Role of the Voluntary Sector in Delivering Youth Employment Services
Paul Anderson	Stephen Green, Kesia Reeve and Paul Hickman	Relocation as a way of ending homelessness
Elle Butterworth	Will Eadson, Stephen Parkes and Ellen Bennett	A Political Analysis of the Scalar Arrangements of UK Urban Air Quality
Alvaro Castano Garcia	Aimee Ambrose and Will Eadson	Reconnecting with energy: using innovative research methods to overcome energy invisibility
Irene Gonzalez Pijuan	Aimee Ambrose and Lucie Middlemiss	Growing up in Energy Poverty
Rebecca Greenwood	Lindsey McCarthy and Kesia Reeve	Exploring the role of informal urban community support in homeless women's sense of dignity
Laurie Heykoop	Will Eadson, Richard Crisp and Aiden While	Green Jobs: The Low Carbon Economy and Labour Market Disadvantage
Ben Jessop	Bob Jeffery and Richard Crisp	Precarity among migrant workers and barriers to accessing formal support
Joseph McMullan	Richard Crisp and Bob Jeffery	A Working-Class Backlash"? An Exploration of How Class, Culture and Identity Shape 'Rupture' in a Post Brexit World
Mia Rafalowicz-Campbell	Ed Ferrari, Stephen Parkes and Rebecca Sharpe	Equity in the provision of active travel infrastructure - learning from a city-region approach
Elizabeth Sanderson	Ian Wilson and Ryan Powell	Negotiating Transitions: Marginalised youth today and the move to adulthood
Jess Scott	Sadie Parr, Lindsey McCarthy and Jenni Brookes	How do young adults (aged 18-35) living in long-term residential care settings make sense of and understand their home environment?
Carina Skropke	Ed Ferrari, Ian Wilson and Tom Archer	Community ownership of physical assets in changing times
Josie Soutar	Chris Dayson, Ellen Bennett and Peter Wells	Social Impact Bonds and the implications for small and medium-sized UK charities
Molly Turrell	Kesia Reeve, Sadie Parr, Jacqui Theobald and Melissa Graham	Investigating Reproductive Experiences and Decision-Making Among Homeless Women in England and Australia
Kaeren Van Vliet	Aimee Ambrose, Sadie Parr and Ed Ferrari	Public and Space and Public Private Interface in Contemporary UK Residential Development
Josie Wilson	Ed Ferrari and Stephen Parkes	Active Travel and the School Commute