

CONTACT US

If you have any questions about the SHU Progress scheme, please contact us:

Phone: 0114 225 4777

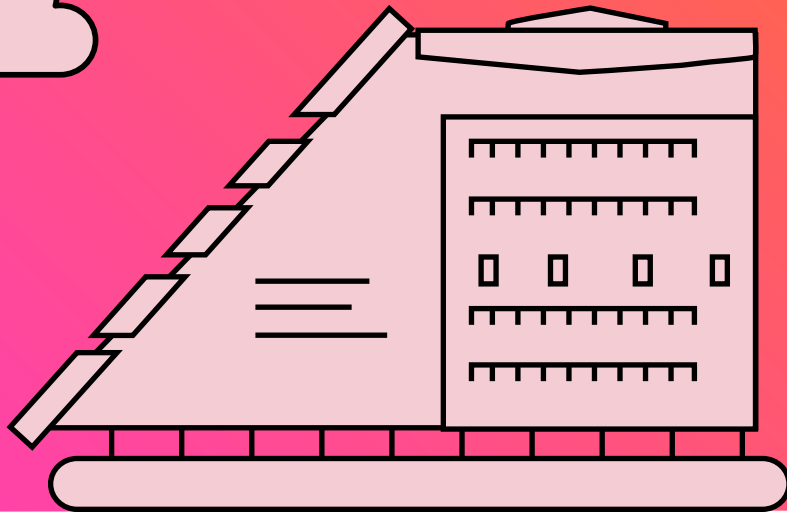
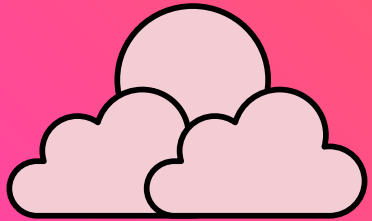
Email: shu-progress@shu.ac.uk
shu.ac.uk/shuprogress

SHU Progress Website



'I felt extremely supported by staff at Sheffield Hallam University. I was made to feel welcome and was informed about all the support and programmes on offer to me. All my questions and concerns were answered which made me feel at ease and I'm excited to start university!'

'SHU Progress helped me gain more confidence and made me certain I could go to university'



**Sheffield
Hallam
University**
Knowledge Applied



SHU PROGRESS APPLICANT AND TRANSITION SUPPORT SCHEME



HOW DOES IT WORK?

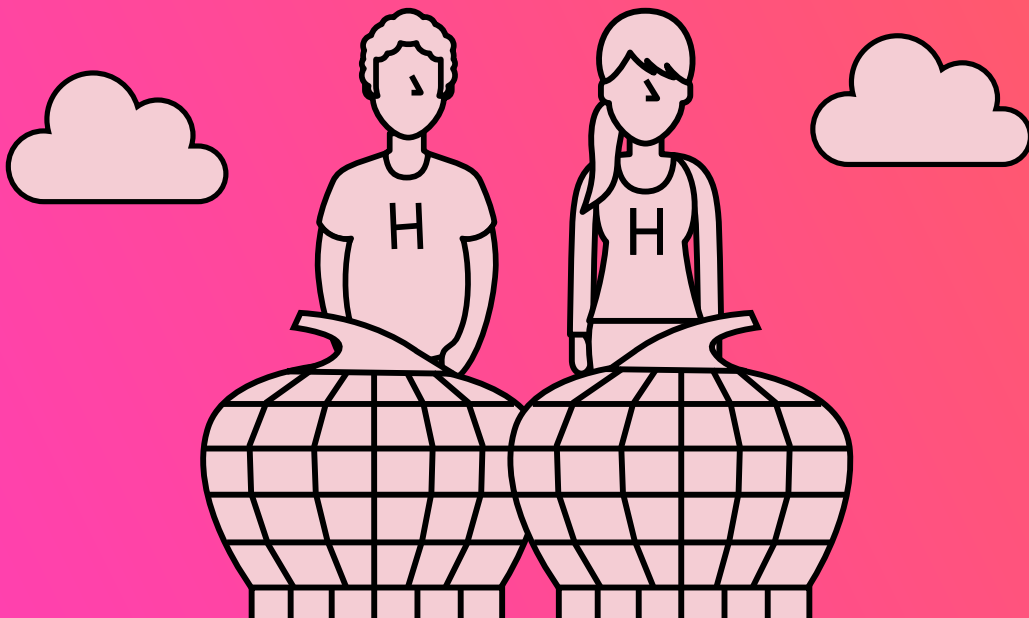
SHU Progress provides support for applicants whose personal circumstances might mean that there are barriers to going to university.

The scheme provides additional support in the year of application and throughout the application process, including the transition to becoming a university student.

Teachers, support workers and other professionals can assist students by supplying additional information about their personal circumstances in an application to join SHU Progress.

Some of the extra support we offer includes:

- A personal contact at the university to provide advice and answer questions throughout the year
- Referrals to specialist teams within the university
- Practical support with key stages of the application process such as UCAS, Student Finance and Accommodation
- Exclusive and personal visits to the university to meet current students and staff
- Support with the costs of visiting the university for our events and open days for applicants and one supporter
- Support with making the best application to SHU, including workshops on preparing for interviews
- Exclusive updates from the SHU Progress team
- Access to the SHU Progress online members area that will include details of relevant additional financial or personal support
- Members may receive a personalised contextual offer, depending on the course they've applied for, their qualifications and their circumstances



WHO IS ELIGIBLE?

SHU Progress is available to all undergraduate applicants who meet at least one of the criteria below:

- care leavers
- independent students estranged from parents
- care experienced
- carers
- applicants with a disability
- homeless/at risk of homelessness
- have experienced circumstances which have affected or disrupted Level 3 studies
- experiencing financial difficulty or hardship
- mature students
- refugees or asylum seekers
- those from a military family
- military veterans or service leavers
- applicants from a Black British background
- those unable to move away from their home area to go to university

WHAT SHOULD I DO?

If you feel that you or somebody you know is eligible for SHU Progress, a professional such as a teacher or support worker can submit a nomination to the scheme. If you don't have anyone that could nominate you, speak to the SHU Progress team.

We support students during their year of application. We encourage students to be nominated at the earliest opportunity, including before they've submitted their application, so that we can provide the maximum level of support.

Visit our website to find out more about SHU Progress and submit a nomination:

shu.ac.uk/shuprogress

You can read about the additional support on offer to students once enrolled at Sheffield Hallam at shu.ac.uk/studentsupport



'I wouldn't have been able to cope without their help and support, therefore I probably wouldn't have applied. They were always there and the information they provide really helped.'

'I feel like I have been supported and understood.'