

WELCOME

A pre-arrival guide for incoming exchange students

Congratulations on being accepted as an exchange student at Sheffield Hallam University!

This guide is divided into five steps to help you arrive on campus safely and well prepared.

We advise you to complete the steps in sequential order. Each step contains a checklist of tasks, which you can cross off as you complete them.

We look forward to welcoming you to Sheffield and Sheffield Hallam University.

Please note: dates in this guide were correct at the time of printing but may be subject to change.

[Please check online here before you travel](#)

STEP 1

On receiving your offer of a place at Sheffield Hallam University

PAGE 3 - 8

STEP 2

In the weeks before you leave

PAGE 9 - 18

STEP 3

Getting ready for departure

PAGE 19 - 22

STEP 4

Arriving in Sheffield

PAGE 23 - 32

STEP 5

Succeeding in your studies

PAGE 33 - 36



STEP 1

On receiving your offer of a place at Sheffield Hallam University

Apply for your visa (if applicable)

••••••••

Book your accommodation

••••••••

Register for disabled student support (if applicable)

Which visa should I apply for?

Most international students need a Student visa. However, exchange students coming to Sheffield Hallam University for up to six months can choose to apply for a Standard Visitor visa instead.

Certain nationalities can apply for an Electronic Travel Authorisation (ETA) in advance of travel. Visit gov.uk/eta for more information.

This costs £10 and can take up to three days to process. An ETA is not a visa, and you will still need to be granted a Standard Visitor Visa to study in the UK.

If you come to the UK on a Standard Visitor visa, you will not be allowed to do any paid or voluntary work and you will not be able to extend your stay in the UK.

Students whose nationality is listed on the UK Government's visa national list are required to apply for this in advance. Students whose nationality is not listed can secure this on arrival at the UK border, you will need to provide evidence of your study programme at the border.

Visit gov.uk/standard-visitor-visa for more information.

Students studying in the UK for a full academic year will need to apply for a Student visa and will need to have a Secure English Language Test (SELT) qualification in order to secure their visa.

I already have a valid UK visa. Do I need to apply again?

If you are currently in the UK on a Student visa for another university, you must apply for a new Student visa before you enrol at Sheffield Hallam University.

If you have any other type of UK visa and are not sure whether or not you need to apply for a new visa, please email hallamhelp@shu.ac.uk for advice.

I need a Student visa. Who can help me apply for it?

The Home Office website provides detailed information and guidance about applying for a Student visa.

Visit gov.uk/student-visa

The UK Council for International Student Affairs (UKCISA) also offers detailed advice for international students applying for study visas.

Visit ukcisa.org.uk

If you require further help and you are in the UK, we strongly recommend that you book an appointment with the international experience advisers at the University.

If you are in your home country and you have a specific query regarding your Student Visa application, please contact the international experience advice team via Hallam Help shu.ac.uk/myhallam/help-and-support for more information.

How long will the application process take?

The Home Office states that you can normally expect a decision on your Student UK visa application within three weeks of applying, however personal circumstances can affect timeframes. We advise you to apply as soon as possible. You can pay an additional fee of £500 for a priority application.

When can I apply for my Student visa?

You can apply for your Student visa no earlier than six months before the start date of your course, however you will need to wait until all of your supporting documents are available.

How do I apply?

You will submit an online application form. Visit gov.uk/student-visa/apply-online for more information. As part of this process, you will need to provide your biometric information. Most applicants can do this by using the Home Office phone app 'UK Immigration: ID Check' to scan their passport. If this is not possible, you will instead need to attend a biometrics appointment at a UK Visa Service Centre. Visit gov.uk/find-a-visa-application-centre for more information. The Student visa application fee is £490. You will also pay for the Immigration Health Surcharge which is calculated at £388 per 6 months of visa.

What documents will I need?

You will need the following documents:

1. Valid passport

Your passport should be valid for the duration of your study in the UK plus six months.

2. Confirmation of Acceptance for Studies (CAS) from Sheffield Hallam University

You will receive your CAS when you accept your unconditional offer. Check your CAS carefully before you use it. Your name must be exactly the

same in the CAS as it is in your passport, and your passport number must be correct. Check that all your qualifications are listed correctly, that the details of the course that you are going to study are correct (including course duration). You will need to submit your original transcripts or qualification certificates. Details of these will be listed on your CAS statement. The documents must include your full name and the name of the academic institution awarding the qualification. They must also include the date and title of award (for certificates) and the course title and confirmation of award (for transcripts).

3. Evidence of enough funds to meet the UKVI maintenance requirements

You will need to show that you have enough funds to pay for £1,023 for each month of your stay, for up to nine months. You will need to prove that you had this amount in your bank account for 28 days before you submitted your application.

4. Tuberculosis test certificate (if applicable)

You will need a tuberculosis (TB) test if you are coming to the UK for more than six months and are resident in any of the countries on the list at gov.uk/tb-test-visa. If the test is clear, you will be given a certificate, which you must submit with your visa application.

5. ATAS Certificate (if applicable)

This is a requirement only for certain engineering courses, and will be noted on your CAS.

Receiving your Student visa approval

The Home Office have fully transitioned to an electronic visa system. You will receive instructions on how to set up your eVisa on approval of your Student visa permission. You must ensure the information on your eVisa is correct. You can download a Share Code from your eVisa account, which you use to evidence your rights as a Student visa holder.

What should I do if my visa is refused?

You must inform us immediately if your visa application is refused by UK Visa and Immigration. Please email your visa refusal notice to admissions@shu.ac.uk

You have two options:

- You can submit an Administrative Review if you think the decision is incorrect. There is no fee for this but it can take at least 28 days – and sometimes much longer – for a decision to be reached. Strict deadlines apply, so you must contact us as soon as you receive your visa refusal notice if you are considering this option.
- Alternatively, you can make a new application. Please read the refusal notice carefully to see which documents were missing or incorrect the first time. You will need a new CAS if you wish to make a new application.

In some cases, the International Experience Team will provide assistance with Administrative Review queries. We will contact you with advice once we have reviewed your visa refusal notice.

How can I contact the International Experience Team?

Email hallamhelp@shu.ac.uk

Visit the International Experience Team page on our website shu.ac.uk/study-here/international/international-experience-team



Book your accommodation

Accommodation in halls of residence

Full-year students (September–July)

Our Accommodation Services offer single occupancy rooms in halls of residence to exchange students who are at Sheffield Hallam University for the full academic year. We have a variety of room types – from standard single rooms, to large single en-suites with larger beds, and even self-contained flats – all in self-catered residences. Wherever you live, you will be within walking distance of our campuses.

Visit shu.ac.uk/accommodation for details on all our accommodation and to apply for a room in halls of residence for the full academic year.

Semester-only students

Sheffield Hallam University offers semesterised accommodation for exchange students. Once your period of study at Sheffield Hallam University has been confirmed, you will receive further details of the designated hall of residence (which will be within walking distance of our campuses) and more information on how to book your accommodation via shu.ac.uk/accommodation

Email: accommodation@shu.ac.uk

Accommodation in the private sector

The safest method of looking for private sector housing is to apply via Accommodation Services. We provide advice on all aspects of house-hunting, have specialist knowledge of the local area and properties available.

If you want to find private sector accommodation, you may wish to finalise arrangements after you have arrived in Sheffield with our help. This will give you the chance to visit the property and meet the landlord. You should plan an early arrival and set a few days aside for this task.

When looking for private sector accommodation, consider the following factors:

- **Location** – the majority of students at Sheffield Hallam University live in S1, S7, S10 or S11. Most of these areas are within walking distance of the University or just a short bus ride away.
- **Rent** – check whether bills and utilities are included in the rent or whether you are expected to pay for those separately. Ensure that you are aware of any additional payments that you will be required to make before you commit.
- **Duration of contract and tenancy agreement** – make sure you understand what you are signing. The Students' Union Advice Centre can go over your tenancy agreement with you before you sign it.

Together with Sheffield City Council and the Students' Union Advice Centre, Accommodation Services have a private sector student property standard called Snug. Only private sector properties that have been vetted - the vetting process includes an inspection and compliance with tenancy management - are advertised on our website at shu.ac.uk/study-here/accommodation/private-sector

You can be sure that any property you find on our Studentpad website will be an ideal home for your time in Sheffield. You can even meet potential housemates through the message board.

If you intend to find private sector accommodation once you have arrived in Sheffield, you will need to book temporary accommodation before you leave your home country so that you have somewhere to stay while you are looking.

Visit shu.ac.uk/accommodation to apply and receive dedicated help and support, discounted hotel rates

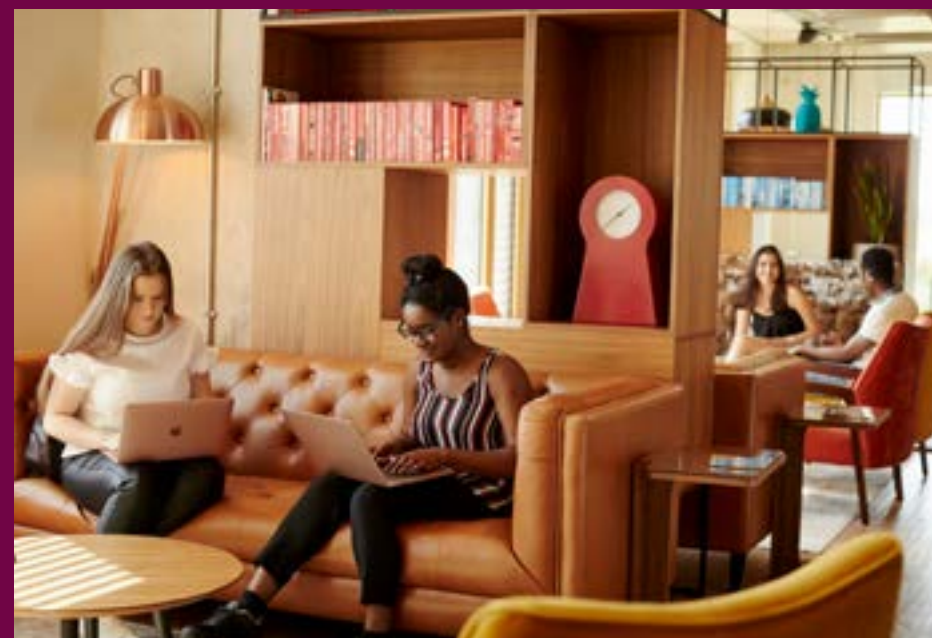
near Sheffield Hallam can be found at shu.ac.uk/business/event-services/information-for-delegates/accommodation

Register for disabled student support (if applicable)

If you have a disability, please register with Disabled Student Support as soon as you have confirmed your place at Sheffield Hallam University.

Visit shu.ac.uk/disabled-student-support to register and to find out about the range of support available to you during your time at Sheffield Hallam University.

To access support at the University, disabled students need to provide evidence of disability. It can be a letter or report (it needs to be in English or an official translation provided) signed by a recognised medical professional, state a diagnosis and that the disability has lasted or is likely to last 12 months or longer.



STEP 2

In the weeks before you leave

Plan your journey to Sheffield and book our free airport pick-up service

••••••••

Book your place on the orientation programme

••••••••

Familiarise yourself with the academic calendar

••••••••

Arrange travel and medical insurance

••••••••

Ask your doctor for your medical records

••••••~•

Finalise your module selection

Plan your journey to Sheffield and book our free airport pick-up service

We strongly encourage you to book our free Manchester airport pick-up service; it will make your arrival easier and more enjoyable. Our friendly student guides will

- meet you at the Manchester airport terminal
- introduce you to other new students
- bring you to Sheffield by train or private coach

If possible, book a flight that arrives before 4pm (16:00) UK time so that you have enough time to collect your luggage and get through immigration before meeting our student guides.

It is your responsibility to find our student guides as soon as possible after your arrival. Unfortunately, if you fail to do this and you miss the pick-up, the University cannot cover your travel costs to Sheffield.

How do I book the service?

Find the full range of available dates and book the service at shu.ac.uk/welcome/prepare/international-arrivals

You must book a place for this service at least one week before you are due to arrive. Make sure you use your personal email address when you complete your details. You will receive a confirmation email with further information about the service. Please check your inbox after you have registered.

If you arrive without booking the service or you book too late, we cannot guarantee that you will get a seat on the coach.

What should I do if I arrive late at night?

If you cannot avoid arriving late at night, you have two options. You can book the airport pickup service for the next morning, if it is available, and find overnight accommodation at the airport. Alternatively, you can take the train to Sheffield.



Visit shu.ac.uk/study-here/international/arriving-at-uk-airports#manchester-airport for travel guidance to Sheffield from Manchester airport.

What should I do if I am arriving at a different airport?

If you choose to fly to another major city in the UK, you can either get a connecting flight to Manchester or travel by train or bus to Sheffield. Visit nationalrail.co.uk for train times and nationalexpress.co.uk/en for bus times.

Visit shu.ac.uk/study-here/international/arriving-at-uk-airports for travel guidance to Sheffield from different UK airports.

Go to shu.ac.uk/visit for information about how to find the University once you get to Sheffield.

Set up your SHU IT account

Approximately two weeks before your start date you will receive an email asking you to enrol. This will have your login details to set up your University IT account.

Once you have done this, you will be able to access your University email with the login and password that you have created. Instructions can also be found on the enrolment guidance page at shu.ac.uk/study-here/international/enrolment-guidance

Book your place on the orientation programme

The University offers an orientation programme for all incoming international and exchange students.

It will offer a combination of on-campus information sessions, interactive workshops, and social activities, such as campus and city tours.

We strongly encourage you to attend and book as many sessions as you can. Find **dates and time for orientation**.



Familiarise yourself with the academic calendar

Academic year 2025/26

SEMESTER 1

Latest enrolment date	12 September 2025
Orientation programme for incoming exchange students	19 September 2025
Welcome week	15 - 19 September 2025
Teaching	22 September - 12 December 2025
Study week	15 - 21 December 2025
Christmas vacation	22 December 2025 - 4 January 2026
Assessment and exams	5 - 16 January 2026

SEMESTER 2

Recommended arrival dates	TBC
Orientation programme for incoming exchange students	TBC
Welcome week	12 - 16 January 2026
Teaching	19 January - 24 April 2026
Easter vacation	30 March - 10 April 2026
Study weeks	27 April - 10 May 2026
Assessments and exams	11 - 22 May 2026

UK bank holidays and additional Sheffield Hallam University holidays:

- 22 December 2025 – 2 January 2026
 - 3 - 7 April 2026
 - 4 May 2026
 - 25 - 26 May 2026
 - 31 August – 1 September 2026
- * Dates subject to change.

For the latest dates please visit shu.ac.uk/myhallam/key-dates

Arrange travel and medical insurance

All students should arrange travel insurance before travelling to the UK.

Whether or not you also need medical insurance depends on your nationality and the duration of your stay in the UK. If you will be studying with us for longer than six months, you will need to pay the Immigration Health Surcharge when you apply for your visa. This will entitle you to free NHS treatment while you are in the UK. The cost is £776 per year and your payment will be calculated according to the amount of time that you will be in the UK (including the additional time at the end of your visa).

If you are studying in the UK for up to six months, only emergency treatment will be free. Therefore, you should purchase medical insurance before you leave home.

Visitors from EU countries, Norway, Iceland, Liechtenstein or Switzerland please visit [nhs.uk/nhs-services/visiting-or-moving-to-england/visitors-from-eu-countries-norway-iceland-liechtenstein-or-switzerland/](https://www.nhs.uk/nhs-services/visiting-or-moving-to-england/visitors-from-eu-countries-norway-iceland-liechtenstein-or-switzerland/) for more information.

Ask your doctor for your medical records

Immunisation records

It is recommended that all students attending a UK university are immunised against measles, mumps, rubella (MMR) and meningitis C (students under 24 years old). Please arrange to have these vaccinations before arriving in the UK, and bring your immunisation record with you.

Medical history

When you register with a doctor in the UK, you will be asked about any existing medical conditions and your medical history. For example, the doctor would need to know if you had asthma or had previously had a serious illness. If you do have any medical conditions, please ask your current doctor in your home country to provide details of your diagnosis and treatment.



Completing your online enrolment

You will receive an email from Sheffield Hallam University asking you to complete your enrolment online. Use your login code and password when setting up your Hallam IT account.

Please note that you must enrol by the latest enrolment date included on your CAS (if applicable) even if you plan to arrive in the UK later.

Step-by-step instructions can be found on the [enrolment guidance page \[shu.ac.uk/welcome/enrol/enrol-online\]\(https://shu.ac.uk/welcome/enrol/enrol-online\)](https://shu.ac.uk/welcome/enrol/enrol-online)



Finalise your module selection

Visit shu.ac.uk/study-here/apply/exchanges/exchange-student-modules for details of the modules that you can choose to study as part of your exchange at Sheffield Hallam University.

Your modules need to add up to a certain number of academic credits (CATS). This depends on how long you plan to study with us. You have to select a minimum credit load of 60 credits (or 30 ECTS) per semester. Most modules are worth 20 or 40 credits, but some have more or less.

Your study plan will be confirmed before you start your studies at the University. In a small number of cases, there may be a timetabling clash with modules you have chosen. In this case, your reserve modules will be taken into account when finalising your record. Therefore, please ensure that you select reserve modules when making your application.

Each of our Colleges has a cut-off date for making changes to study plans.

Please ensure that you carefully consider which modules you would like to study, as you may not be able to change your options later.

You are asked to choose modules from one School/Institute only.



STEP 3

Getting ready for departure

Pack important items in your hand luggage

• • • • •

Pack appropriate clothing

• • • • •

Check the safety of any electrical equipment you intend to bring

• • • • •

Find temporary accommodation (If required)

Pack important items in your hand luggage

Make sure that you pack the following important items in your hand luggage and keep them with you at all times:

- your passport
- any medication you are taking
- details and policy wording for any insurance you have arranged
- enough money in sterling and travellers' cheques for your first few weeks
- any accommodation contracts or payments that you have been asked to bring with you
- your CAS (if applicable)
- your Home Office decision letter informing you where to collect your visa (BRP) on arrival in the UK (if applicable)
- your final letter of acceptance for your course
- documentary evidence of your finances
- a recent chest X-ray report (CXR) in English, confirming that you do not have active TB (if necessary – check [gov.uk/tb-test-visa](https://www.gov.uk/tb-test-visa) for more information).

Carrying cash

Don't carry large amounts of cash in your luggage. Only bring enough with you to cover expenses for the first few days.

If you have no other option but to bring a large sum of money with you, please read the guidance at [gov.uk/bringing-cash-into-uk](https://www.gov.uk/bringing-cash-into-uk)

Climate and clothing in the UK

In summer (June to August), temperatures can reach 25–30°C, while in the winter they often drop to around 5°C during the day, and there is usually some snowfall in December, January or February. Make sure that you pack appropriate clothing for the weather, including:

- a warm, waterproof winter coat or jacket
- two jumpers/sweaters
- strong waterproof shoes or boots
- warm gloves/hat/scarf

It may be cheaper to buy some of this clothing when you arrive in the UK. Dress in the UK is mostly very informal.

Luggage

Use good quality, strong luggage, labelled with your contact details both in your home country and the UK. If you do not know your address in the UK yet, use the University's address – Sheffield Hallam University, City Campus, Howard Street, Sheffield S1 1WB, UK

In the unlikely event that your luggage is damaged or lost, report this at the airport. Your luggage can be delivered to our 24- hour reception, if necessary.

Check the safety of any electrical equipment you intend to bring

Electricity in Britain is supplied on 240volts/50Hz cycles.

Check that any electrical appliances that you intend to bring with you will work safely on this voltage, and bring adapters to help convert the voltage, if necessary.



One third of the city of Sheffield lies within the beautiful countryside of the Peak District National Park

STEP 4

Arriving in Sheffield

Find out about the two campus locations

••••••••

Arrive at the University

••••••••

Take part in the international orientation and Welcome Week

••••••••

Enrol on your course and get your SHUcard

••••••••

Open a bank account

••••••••

Check your timetable

••••••~•

Register with a doctor

••••~•~•

Meet your named international experience adviser

••••~•~•

Organise your council tax exemption

••••~•~•

Find out about part-time work opportunities

••••~•~•

Enjoy life in Sheffield!



Find out about the two campus locations

Sheffield Hallam University has two different campus locations:

- City Campus is located opposite Sheffield train station and next to Sheffield bus station – as you walk out of the train station, you are right in the middle of City Campus.
- Collegiate Campus is a 20 minute walk from the city centre, in the popular student area around Ecclesall Road.

Visit shu.ac.uk/visit-us/how-to-find-us for more detailed information and downloadable campus maps.

If you have booked the University's free Manchester airport pick-up service, you will be taken to City Campus.

Which campus will I be studying at?

The course description in the online prospectus at shu.ac.uk/courses contains information about the location of study.

Please note that we are unable to give you precise information about the buildings in which your lectures and seminars will take place until the start of term.

Arrive at the University

As soon as you arrive at Sheffield Hallam University, you can visit the Meet and Greet desk in the main entrance at City Campus

The Meet and Greet Desk

There will be an on-campus meet and greet desk for all new international and study exchange students. Our staff and experienced student ambassadors will be available on campus to help with any enquiries.

To find out dates and location on the desk visit shu.ac.uk/welcome/prepare/international-arrivals

What should I do if I arrive late in the day?

If the main University entrance is closed, ring the bell on the right-hand side of the door. Security staff will be available for assistance.

EMERGENCY PHONE NUMBER

0800 073 1318

The University has an emergency phone number for international students who experience problems with their journey to Sheffield. You will be able to contact a member of staff 24 hours a day during September and January. Please note that this number can only be used within the UK.



Take part in international orientation and Welcome Week

Your first week will be very busy and exciting as you explore your new home! The University organises orientation events for all new international students. During international orientation, you will get lots of information about all the services we provide, as well as advice on opening a bank account and registering at the medical centre. You will also have plenty of opportunities to meet staff and students, have fun and start making new friends!

International orientation will offer a combination of on-campus information sessions, interactive workshops, and social activities, such as campus and city tours.

What should I do if I miss orientation?

Find the full range of available dates and book your online sessions. Visit shu.ac.uk/welcome/prepare/international-arrivals/international-orientation for more information.

If you arrive in Sheffield after the international orientation and exchange induction, you will be able to catch up on the information you have missed.

You will be contacted by email with details about how you can do this.

Enrol on your course and get your SHUcard

You will need to complete the online enrolment task and attend a document verification event to become fully enrolled on your course. You can attend a document verification event before or after completing the online enrolment task. You will receive an invitation to the event before you start your course. The invitation will contain information on dates and times of the events and what you will need to bring with you – this will be your passport and your visa, your share code if you have an electronic visa, or your boarding pass or e-ticket if you are here on a Standard Visitor visa. The document verification events can be very busy, therefore please arrive early or allow time for queueing.

Please see the **Completing your online enrolment section on page 15** for more information on enrolment.

When you have enrolled fully, you will be able to apply for your SHUcard, which gives you access to the University's libraries.

Open a bank account

You should open a bank account as soon as possible after arriving in Sheffield. We advise choosing a bank with a city centre branch. Please do your research online and **read this bank options summary** to choose the one that suits your needs best.

To open an account, you will need your passport and a bank letter confirming your term-time and home address as well as the duration of your course. You can print or download a bank letter from My Student Record at msr.shu.ac.uk.

Please check that the information on the letter is correct before you go to the bank. You should also make sure that your name as printed on the bank letter is exactly the same as it appears in your passport.

Check your timetable

Your timetable will be available a week before your course starts.

Check your timetable carefully and regularly – it is subject to minor changes, especially in the first two weeks of teaching.

Report any timetabling clashes to your departmental helpdesk.

Download the Hallam Uni app, where you will be able to check your timetable and stay informed about your course. Visit shu.ac.uk/myhallam/it-and-library/it-help/my-it-account/hallam-uni for more information.

Register with a doctor

Register with a doctor (GP) as soon as possible after arriving in the UK – do not wait until you feel unwell. You will be guided on how to register with the medical centre during orientation. If you miss this briefing, you will be able to find out how to register by visiting the meet and greet desk or by visiting the University's medical centre itself.

When you register, you will be asked about your vaccination record and given additional vaccinations, if necessary.

Is it free to use the medical centre?

Yes, it is free to make an appointment with your GP or the practice nurse at the medical centre. However, please bear in mind that some NHS services are not free – for example, you will need to pay for your prescriptions, and for appointments with a dentist or optician.

Will I have to pay for other NHS treatment – for example, treatment in hospital?

Whether or not you will need to pay for other NHS treatment or services depends on why you require treatment, your country of residence and the duration of your stay in the UK.

Some NHS treatments are always free for everyone, including:

- accident and emergency services (but not necessarily follow-up treatment, or later admission to hospital as an in-patient)
- family planning services
- diagnosis and treatment of sexually transmitted infections
- diagnosis and treatment of certain infectious diseases

- treatment of conditions caused by torture, female genital mutilation, domestic violence or sexual violence (provided you did not come to the UK for the specific purpose of seeking such treatment)
- compulsory psychiatric treatment or treatment that has been ordered by a court

If you are studying in the UK for up to six months

If you are studying in the UK on a Student visa or a Standard Visitor visa for up to six months, you will not have to pay Immigration Health Surcharge and will only be entitled to free emergency health care. You will have to pay for any hospital visits, such as treatment for a broken bone or for serious infection or disease. We strongly advise you, therefore, to take out comprehensive medical insurance before travelling.

If you are studying in the UK on a Student visa for longer than six months, you will pay the Immigration Health Surcharge (IHS) when you apply for your Student visa.

You will, therefore, qualify for free NHS treatment. Please note that you will still need to pay for:

- prescription medicines
- some GP services (such as travel vaccinations and getting a sickness certificate)
- dental treatment
- optical treatment
- treatment for any illness or condition that existed before you arrived in the UK

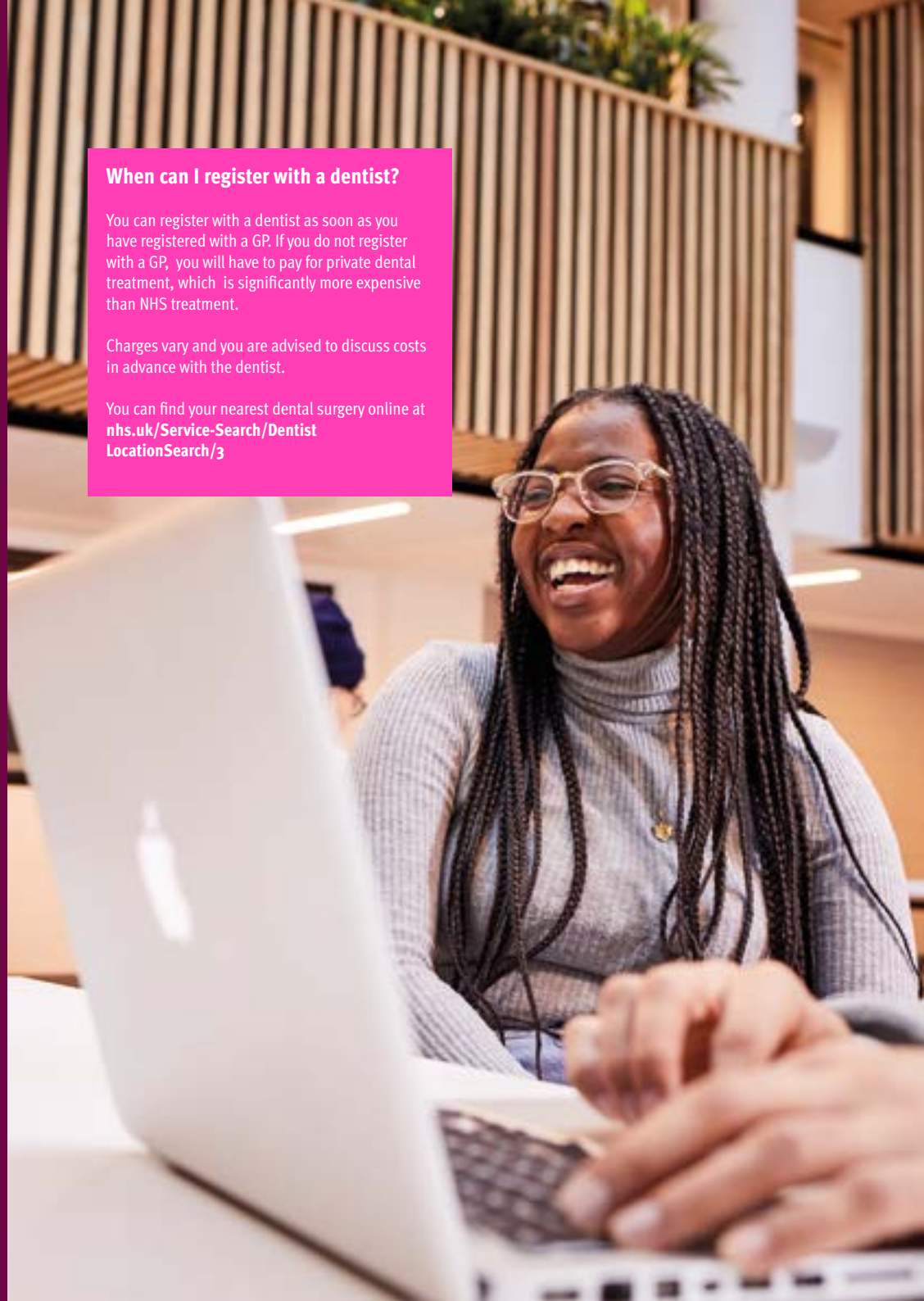
If you are an EU national with settled or pre-settled status in the UK, please refer to detailed guidance at **UKCISA - international student advice and guidance - Information & Advice**

When can I register with a dentist?

You can register with a dentist as soon as you have registered with a GP. If you do not register with a GP, you will have to pay for private dental treatment, which is significantly more expensive than NHS treatment.

Charges vary and you are advised to discuss costs in advance with the dentist.

You can find your nearest dental surgery online at **nhs.uk/Service-Search/DentistLocationSearch/3**



International experience advisers

If you need help at any point, your college mobility co-ordinator is your first point of contact.

Please see the last page for their contact details.

During international orientation, you will also be introduced to the international experience advisers. Their role is to ensure that you receive the support you require while studying with us. You can contact them about any issues that have not been resolved by your college student support services.

The international experience advisers are based in Student Support Services in the Owen Building, City Campus.

You can book an appointment with them by contacting Hallam Help at shu.ac.uk/myhallam/help-and-support

Organise your council tax exemption

Students studying for one semester only

If your exchange programme is for up to 24 weeks, you will need to provide the council in Sheffield with a letter from your home university as well as a council tax exemption letter from Sheffield Hallam University in order to become exempt from paying council tax.

The letter from your home university must include:

- your address in Sheffield
- the start date and end date of your degree programme at your home university
- the start date and end date of your exchange placement at Sheffield Hallam University
- confirmation that you remain a full-time student at your home university while studying at Sheffield Hallam, and that you will remain a full-time student when you return after your exchange placement

A council tax exemption letter from Sheffield Hallam University can be printed via My Student Record at msr.shu.ac.uk

Full-year students

Full-year students only need a council tax exemption letter from Sheffield Hallam University to apply for council tax exemption.

This can be printed from My Student Record at msr.shu.ac.uk

Once you have the required documents, apply for council sheffield.gov.uk/council-tax/council-tax-exemptions

Find out about part-time work opportunities

If you are planning to work while you study, you will need a National Insurance (NI) number.

Visit [gov.uk/apply-national-insurance-number/how-to-apply to apply](https://gov.uk/apply-national-insurance-number/how-to-apply-to-apply). It may take some time to get your NI number. However, you can start working part-time as long as you can prove that you have the right to work. If you have a Biometric Residence Permit (BRP) your visa will state whether or not you are permitted to work and for how many hours a week.

Please note that if you are staying in the UK on a Standard Visitor visa you cannot work or volunteer.

If permitted to work part-time hours, the University recommends that you work no more than 15 hours a week. Greater work commitment is likely to have a negative impact on your studies. If you are interested in part-time work, visit Careers Connect for advice and support at shu.ac.uk/careers or call once you arrive on **0114 225 3752**.

The Careers and Employability Team runs regular workshops, and you can book an appointment to see an employability adviser to discuss any career-related query you may have.

You can find your designated employability adviser here: shu.ac.uk/careers/see-an-adviser/meet-the-team

Enjoy life in Sheffield!

Sheffield is a welcoming, multicultural city with a rich and proud history.

It offers the best of both worlds, having all the amenities, culture and entertainment of a big city as well as the peaceful, green spaces of the countryside.

The city has a vibrant art, music and film scene, with the largest theatre complex outside London, five multiscreen cinemas, nine major art galleries and many venues showing performances from internationally-renowned comedians, musicians and bands.

Sheffield is one of the greenest cities in Europe, and one-third of the city lies within the beautiful countryside of the Peak District National Park, where you can visit some of the UK's most spectacular historic houses and castles. There are also many opportunities for climbing, mountain biking and hiking.

What places of interest are there in and around Sheffield?

Here are just some of the fascinating places you can visit in and around Sheffield:

- **The Millennium Galleries** – four exhibition galleries of visual art, craft and design in Sheffield's city centre
- **Chatsworth House** – one of Britain's best loved historic houses, dating from the 1400s
- **Meadowhall shopping centre** – over 250 shops and numerous restaurants, bars and cafes
- **The Winter Garden** – 2,500 plants in one of the largest temperate glasshouses in Europe
- **The Crucible and Lyceum theatres** – making up one of the largest theatre complexes in the country and host of the World Snooker Championship

- **Sheffield Botanical Gardens** – 19 acres of gardens with beautiful Victorian glass pavilions

- **Utilita Arena** – huge sports and entertainment venue, attracting the biggest music bands, performers and sports teams from across the world

How expensive is Sheffield?

Life in Sheffield can be a little cheaper than in some other UK cities, depending on your personal lifestyle. However, you are likely to need about £1,000 per month to cover living expenses including accommodation. You can find more detailed information about the cost of living in Sheffield online at numbeo.com/cost-of-living/in/Sheffield.

For more detailed information about Sheffield, visit shu.ac.uk/study-here/sheffield.



STEP 5

Succeeding in your studies

Use the University's Student Support Services

•••••

Make the most of our libraries and IT facilities

•••••

Sign up to the University English Scheme

•••••

Develop your academic skills

•••••

Make sure you understand how you will be assessed

•••••

Get involved in campus life

•••••

Look after yourself and your mates

Use the University's Student Support Services

Many services and facilities are available at Sheffield Hallam University to offer advice and support. Make sure that you know who can help you.

The Student Support Services offer a wide range of high-quality support and guidance, including:

- international experience service and immigration advice
- help with seeking part-time work and career planning
- study support
- wellbeing support
- faith and religious support
- services for students with disabilities
- a nursery and childcare services

Find out more by emailing studenthelp@shu.ac.uk or visit or visit our [student support web pages](#)

Make the most of our libraries and IT facilities

Each University campus has its own library: the Adsetts Library at City Campus and Collegiate Library at Collegiate Campus.

These libraries offer traditional library services and more, including the loan of books, journals, DVDs and e-resources; individual and group study spaces; PCs; free Wi-Fi; printers and photocopiers.

University libraries and self-service facilities are open 24 hours a day throughout the year and you can buy food and drink there at any time, day or night. You can work at one of 4,000 PCs and Macs in our libraries, cafes, teaching rooms and other study spaces. Wi-Fi is available across campus so you can bring your own device or borrow a laptop from us.

Each library has a helpdesk near its entrance where you can get information about the facilities on offer and ask for help with your borrowing, information and IT needs.

When you are working from home, you can access our range of library services through **MyHallam**.

MyHallam is your student hub with everything you need to know on events, resources and support. You can also access learning platforms like Blackboard and MyStudentRecord, alongside your email and timetable.

Get access to the library search function, information databases and electronic resources, including e-books, e-journals plus video and image resources.

Visit shu.ac.uk/libraries

Sign up to the University English Scheme

If English is not your first language, it is essential that you quickly develop your confidence in speaking and understanding English.

You can improve your English alongside your studies through our University English Scheme. This offers free English language classes to help you enhance and improve your English for academic study.

To find out more about English language support, view our libguides.shu.ac.uk/c.php?g=684327&p=4886068

Develop your academic skills

The Bridge is the academic skills development centre in our libraries. It offers a range of individual and group study support sessions, including:

- academic skills development sessions
- a language advisory service
- help with maths and stats
- web-based tutorials
- specialist study skills for students with specific learning differences, such as dyslexia

To find out how the Bridge can help you, visit blogs.shu.ac.uk/thebridge

Make sure you understand how you will be assessed

You will be assessed in the same way as degree students at Sheffield Hallam. This will involve coursework and/or examinations for each study module. If you successfully complete a study period at Sheffield Hallam, you will be issued with a full transcript detailing the academic credit that you have been awarded, which can count towards your degree.

What are assessment credits?

You are expected to obtain the following credits during your exchange at Sheffield Hallam. In the UK, the credit system is CATS (Credit Accumulation Transfer System) but at Sheffield Hallam we have also adopted ECTS (European Credit Transfer System) to help exchange students transfer their credit back to their home institution.

- Full year – 120 CATS/60 ECTS
- One semester – 60 CATS/30 ECTS

What happens if I do not pass a module?

The pass mark for undergraduate modules is 40 per cent. For postgraduate modules, it is 50 per cent.

If you do not reach the pass mark in one of your modules, you will be given the chance to retake the module at a later date, but the mark will be capped to the pass mark. If your home university prefers you to not retake the modules in Sheffield, please tell your exchange co-ordinator so that they can close your record.



Get involved in campus life

There are many other ways to get involved on campus, please visit linktr.ee/shu_goglobal – here are some suggestions that may interest you.

- Join our Conversation Club and our other GoGlobal activities. Follow GoGlobal on Instagram [@shu_goglobal](https://www.instagram.com/shu_goglobal) for regular updates.
- Join a Hallam Union Society or a sports club. To find out what's on offer, visit hallamstudentsunion.com/opportunities/
- Check our events page for a line-up of trips to local attractions and cities around the UK, plus all upcoming GoGlobal schemes, projects and socials. shu.ac.uk/goglobalevents

Look after yourself and your mates

We have a well-established network of support services available, should you encounter any emotional or personal issues during your stay.

- For advice on coping with homesickness and culture shock, contact your nominated international experience adviser in the International Experience Team.
- For advice on coping with difficult academic circumstances, contact the student support adviser in the college where your course is based.
- If you experience distress or problems that are seriously affecting your emotional state or mental health, contact Student Wellbeing.

Useful contacts

Websites

Sheffield Hallam University
shu.ac.uk/international

Sheffield City Guide
[city guide shu.ac.uk/sheffield](https://cityguide.shu.ac.uk/sheffield)

**Sheffield Hallam University
Accommodation Services**
shu.ac.uk/accommodation

**Information and advice for international students
coming to study in the UK**
ukcisa.org.uk

Information on student life in the UK
studyuk.britishcouncil.org

Street maps
walkit.com/cities/sheffield

Campus maps
shu.ac.uk/maps

Student Health at SHU
studenthealthatshu.co.uk

MyHallam
shu.ac.uk/myhallam

X
[@SHUGoGlobal](https://twitter.com/SHUGoGlobal)

Instagram
[@shu_goglobal](https://www.instagram.com/shu_goglobal)

SHU GoGlobal website
shu.ac.uk/global

Contacts

International Experience Team
Owen Building
Sheffield Hallam University
City Campus
Sheffield S1 1WB
Phone +44 (0)114 225 2222
Email hallamhelp@shu.ac.uk

Accommodation Services
Sheffield Hallam University
38/40 Howard Street
City Campus
Sheffield S1 1WB
Phone +44 (0)114 225 4501
Email international-accommodation@shu.ac.uk

Medical Centre
Student Health at SHU
First Floor Surrey Building
Pond Street
Sheffield S1 1WB
Phone +44 (0)114 225 2134
Fax +44 (0)114 276 9596

Careers and Employability Centre
Sheffield Hallam University
City Campus
Howard Street
Sheffield S1 2LX
Phone +44 (0)114 225 3752
Email careers@shu.ac.uk

College Mobility Coordinators

Direct contacts for your department [shu.ac.uk/
goglobal/transformational-opportunities-abroad/
study-exchange/college-mobility-coordinators](https://shu.ac.uk/goglobal/transformational-opportunities-abroad/study-exchange/college-mobility-coordinators)

If you have a general enquiry about Erasmus and other exchange opportunities, please contact the Global Partnerships Team at erasmus-exchange@shu.ac.uk

Hallam Help
Email hallamhelp@shu.ac.uk
Phone +44 (0)114 225 2222

Chat to a student

Chat one-on-one online with our current students and find out everything you want to know about life at Sheffield Hallam, from studying our courses to living in Sheffield and everything in between.

You can also read our student blogs to find out more about their university experiences. Register today and get a conversation started [shu.ac.uk/study-here/
student-chat](https://shu.ac.uk/study-here/student-chat)



shu.ac.uk

ACCURACY OF INFORMATION

We made every reasonable effort to ensure that the information in this brochure was accurate at the time of going to press in June 2024. However, we regularly review our courses and associated support services and these may change from time to time. We strongly recommend you visit our website to check the current position on courses and services.

Some courses have professional body accreditation, which may expire during the lifetime of this publication. To check the latest information, please see the online full course entries at shu.ac.uk/prospectus

