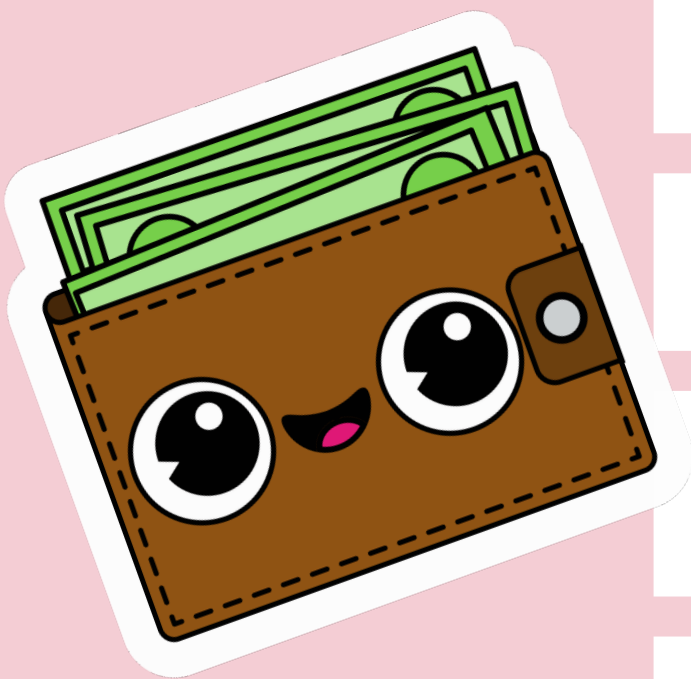


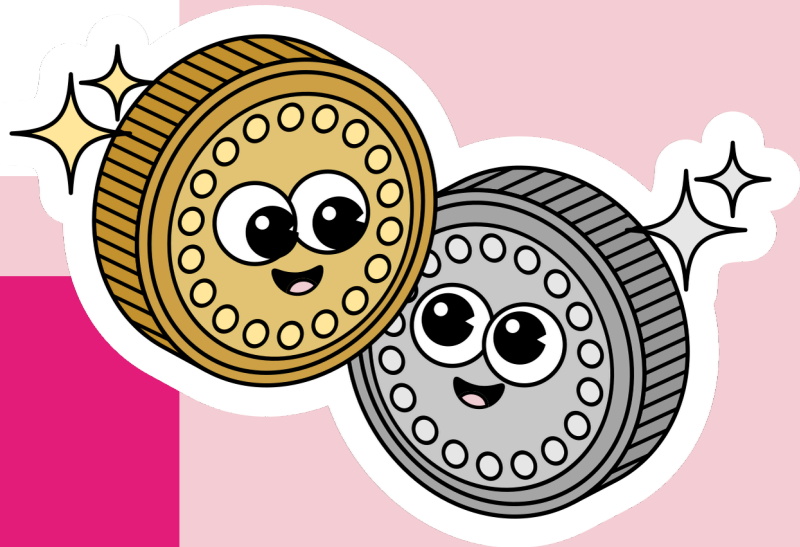
# BUDGETING TASK

Scenario:

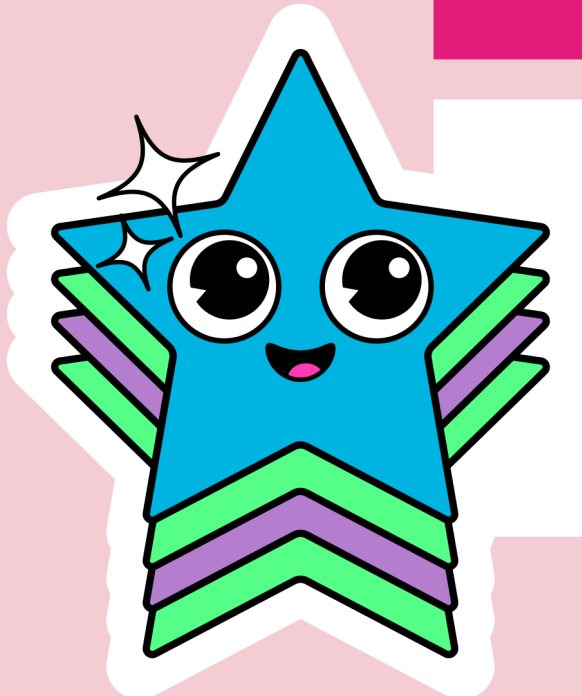
- You are living away from home
- You are given a maintenance loan of £6000 a year
- Your first payment is £2000 and paid at the end of September
- It needs to last until the beginning of January (Total of 14 weeks)
- What options will you choose and how much will they cost?



Weekly items	Option	Cost for 14 weeks
Accommodation & Bills		
Food		
Movie / TV		
Music		
Phone		
Social budget		
Travel		
Sport		
	Total	£



One - off items	Option	Cost
Household items		
Course supplies		
University books		
Birthdays and holidays		
	Total	£



Earnings and income	Option	Earnings for 14 weeks
Part time job		
Maintenance loan	n/a	2000
	Total	£

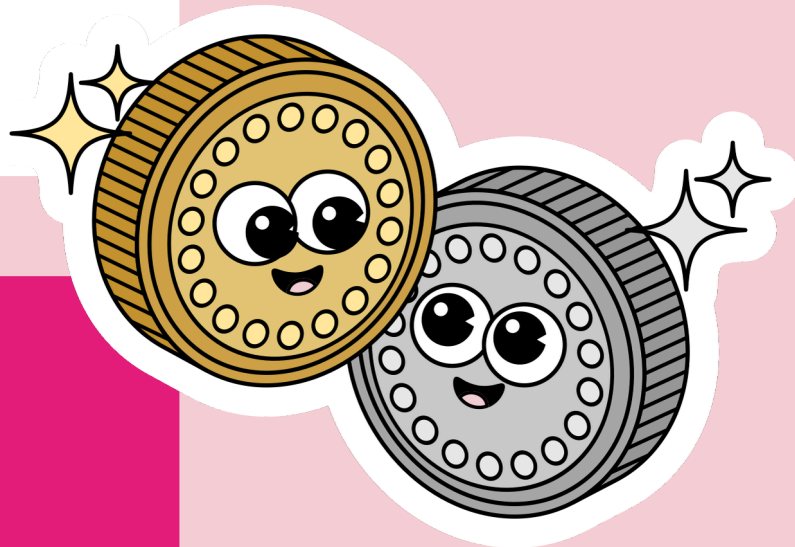
Earnings and income - Weekly items - One off items = TOTAL (+ / -) £

# BUDGETING TASK

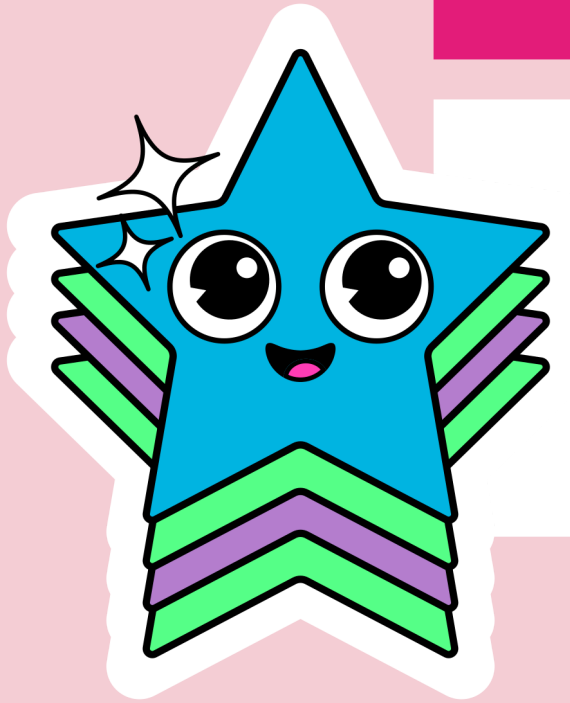
## example



Weekly items	Option	Cost for 14 weeks
Accommodation & Bills	3	1666
Food	4	280
Movie / TV	3	15.75
Music	3	0
Phone	4	35
Social budget	3	450
Travel	3	112
Sport	1	70
	Total	£ 2,628.75



One - off items	Option	Cost
Household items	3	30
Course supplies	3	10
University books	3	0
Birthdays and holidays	2	50
	Total	£ 90



Earnings and income	Option	Earnings for 14 weeks
Part time job	2	1120
Maintenance loan	n/a	2000
	Total	£ 3120

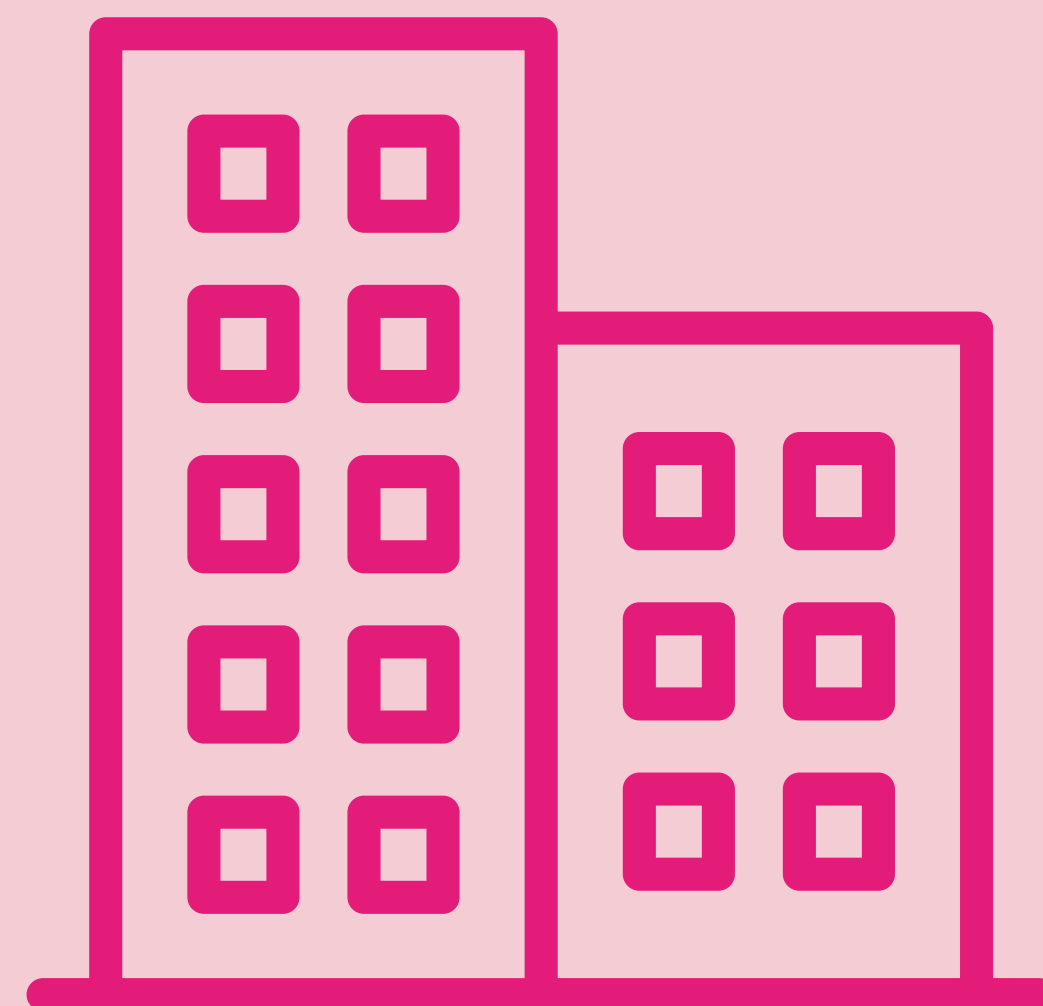
Earnings and income - Weekly items - One off items = TOTAL (+ / -) £

+ £401.25

# ACCOMMODATION OPTIONS

## Option 1 - Norfolk Gardens - £89 per week = Total of £1246 for 14 weeks

- Self-catering
- Shared bathroom (sink in bedroom)
- Single bed
- A 15 minute walk from the university
- Shared lounge and kitchen
- Outdoor garden and courtyard
- All bills included



## Option 2 - The Trigon - £96 per week = Total of £1344 for 14 weeks

- Self-catering
- En Suite
- Single bed
- Located in the city centre
- Shared lounge and kitchen
- Social areas (common room and courtyard)
- All bills included

## Option 3 - The Forge - £119 per week = Total of £1666 for 14 weeks

- Self-catering
- En suite with  $\frac{3}{4}$  bed
- Close to university (10-15 minute walk)
- Shared lounge and kitchen
- Outdoor half basketball court
- Modern communal area with table tennis, table football, pool table and games consoles
- Study room
- All bills included



## Option 4 - The Gate - £157 per week = Total of £2198 for 14 weeks

- Self-catering
- En suite with  $\frac{3}{4}$  bed
- Located in the city centre
- Shared lounge and kitchen
- Social spaces across various floors including TV rooms, seating areas, hot beverage station, gaming area and study rooms
- Roof terrace
- Free on-site gym
- All bills included

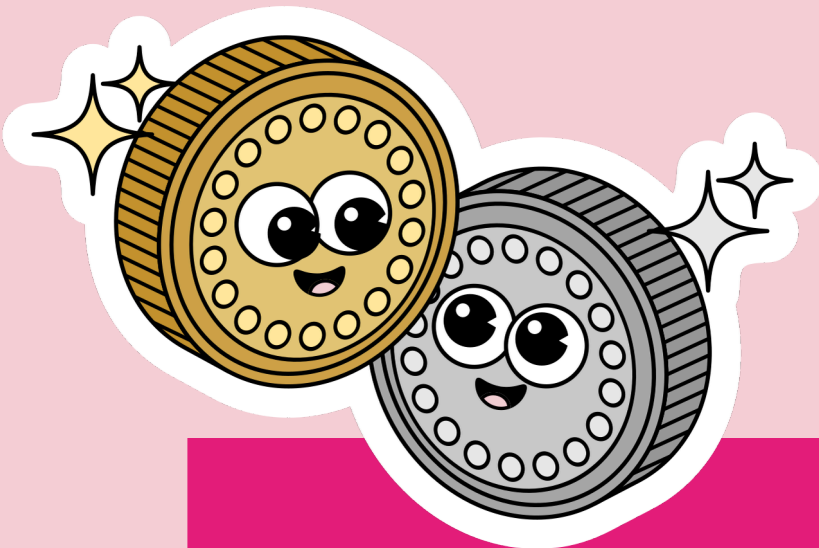
## Option 5 - LIV student - £178 per week = Total of £2492 for 14 weeks

- Self-catering
- Self-contained flat (bathroom and kitchen) - no sharing
- Double bed
- Close to university (10-15 minute walk)
- Large social space with free gym and exercise studio, hosting kitchen, pool and air hockey tables, seating, karaoke room and more!
- Cinema room with games console
- All bills included



# OTHER OPTIONS

weekly



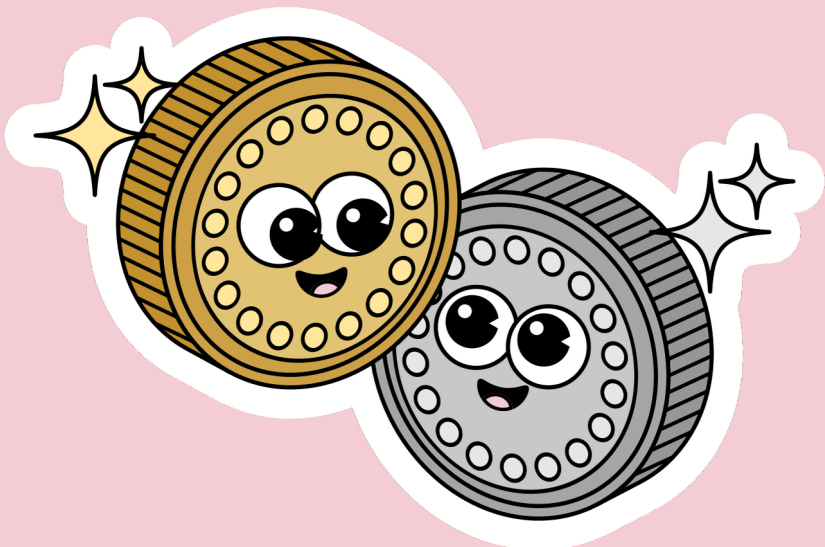
Weekly item	Option 1	Option 2	Option 3	Option 4
Food	Mainly takeaways and eating out £55 a week (£770 for 14 weeks)	Shopping as when you need at the closest shop £40 a week (£560 for 14 weeks)	Weekly branded shop (e.g. Sainsbury's) £30 a week (£420 for 14 weeks)	Weekly unbranded shop (e.g. Aldi) £20 a week (£280 for 14 weeks)
Movie/TV	TV Licensing & Netflix with ads £5 a week (£70 for 14 weeks)	TV Licensing £3.43 a week (£48.02 for 14 weeks)	Amazon Prime for students £1.13 a week (£15.75 for 14 weeks)	None £0
Music	Spotify for students £1.50 a week (£21 for 14 weeks)	Amazon Prime for students £1.13 a week (£15.75 for 14 weeks)	None £0	
Phone	Newest phone with unlimited data/texts/calls (36 month contract) £11 a week (£154 for 14 weeks)	Older phone with unlimited data/texts/calls (36 month contract) £9.55 a week (£133.70 for 14 weeks)	Older phone with limited data/texts/calls (36 month contract) £6.30 a week (£88.20 for 14 weeks)	SIM only contract 25 GB data/unlimited calls/unlimited texts (no contract) £2.50 a week (£35 for 14 weeks)
Social budget	£70 a week (£1050 for 14 weeks)	£50 a week (£700 for 14 weeks)	£70 a week (£450 for 14 weeks)	£70 a week (£140 for 14 weeks)
Travel	Taxis £25 a week (£350 for 14 weeks)	Driving own car & parking permit £20 a week (£280 for 14 weeks)	Public transport (with student card) £8 a week (£112 for 14 weeks)	Walking / cycling £0
Sport	Unlimited sport membership (gym, university sport and city wide facilities) £5 a week (£70 for 14 weeks)	University gym membership £2.90 a week (£40.60 for 14 weeks)	University sport membership (does not include gym) £2.60 a week (£36.40 for 14 weeks)	Free exercise (running, walking, cycling, home workouts) £0



# OTHER OPTIONS

## one-off

Weekly item	Option 1	Option 2	Option 3	Option 4
Household items (cutlery, crockery, furnishings etc.)	Brand new branded set £80	Brand new basic set £50	Second hand set £30	Gather items from family home and buy a few essentials £15
Course supplies	New laptop and stationary £500	Used laptop and stationary £250	Basic stationary and use university facilities £10	
University books	New university books £60	Used university books £35	Use library books £0	
Birthdays and Holidays	Gifts and dinner £100	Gifts £50	Handmade / second hand gifts £10	Just a text or call to wish them happy birthday £0



# INCOME

Part time job	Option 1	Option 2	Option 3	Option 4
Job	16 hours £160 a week (£2240 for 14 weeks)	8 hours £80 a week (£1120 for 14 weeks)	4 hours £40 a week (£560 for 14 weeks)	None

