

**Sheffield
Hallam
University**
Knowledge Applied

**YOUR GUIDE TO OUR
APPLICANT**

**OPEN
DAY**

SPRING 2025



TEF
2023

Gold

WELCOME TO HALLAM



Plan your day	4	Support talks and stands	30	Maps	42	City Campus map	46
How to get around	6			Campus and accommodation map	44	Collegiate Campus map	48
Course talks and stands	8	Accommodation to visit today	38				

USEFUL INFO



Access for all

If you need support during your visit, please let us know. You can contact us before the event on 0114 225 5533 or speak to a member of staff on the day. Our student support team will be available to answer any questions in Heartspace Atrium, Level 2, Owen Building at City Campus and in Heart of the Campus at Collegiate Campus.



Photography and video

Photos and video may be taken at this event to support our marketing activity. They may appear on our website, social media accounts, email communications, printed marketing materials and third party websites. If you don't want to be photographed or filmed, just let the photographer know or speak to a member of staff.



Health and safety

A fire alarm is the signal to evacuate the building. Staff and student ambassadors will guide you to your nearest exit and assembly point.

If you need first aid, speak to a member of staff or student ambassador.



Where to eat and drink

You can pick up something to eat or drink in our university outlets located across both campuses. Outlets open 9am-2pm.

City Campus

- Hallam Café – Atrium, Level 5
- Charles Street
- HPO

Collegiate Campus

- The Granary – Heart of the Campus
- The Crescent – Robert Winston Building

Scan for full details including Opening Times.



Wi-Fi

Network:
WIFI-GUEST

Check your wifi is on. Select "WIFI-GUEST" from the available network list. Follow the on-screen instructions. The University does not exercise control over the nature, content or reliability of the information and/or data passing through our network.



How to get here

Find campus locations and information about getting here, including car parking near our campuses.



[SHU.AC.UK/VISIT-US/HOW-TO-FIND-US](https://shu.ac.uk/visit-us/how-to-find-us)



PLAN YOUR DAY

There's so much to do at an open day, it can be hard to know where to start. To really get a feel for Sheffield Hallam and if it's the right place for you, try to check out these key elements. It all starts at 9.30am and finishes at 3.30pm.

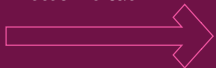
Check in



When you get here, check in. We'll ask you for the QR code that we sent you when you booked, but don't worry if you don't have it. You can check in at various locations across campus, so just pick the one that suits you.

⌚ 10 MINS

Welcome talk



Start your day with a brief introduction to Sheffield Hallam from our staff and students. Head to your nearest lecture theatre at the following times:

- Pennine Lecture Theatre, Level 2, Atrium, City Campus - 9.45–10.15am
- Pennine Lecture Theatre, Level 2, Atrium, City Campus - 10.30am–11am
- HC.0.06, Heart of the Campus, Collegiate Campus - 10–10.30am

⌚ 30 MINS

Rooms may be subject to change, please scan the QR code on the back of this guide for the most up-to-date information on our arrival guidance page.

Discover your course



Meet lecturers and students from your chosen course. You may have the opportunity to visit the spaces and facilities where you will study. See the schedule starting on page 8.

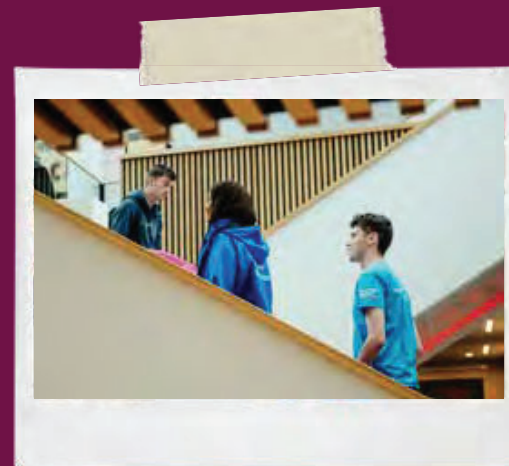
⌚ 1-2 HOURS

Support talks and stands



Got any questions about what support and help you'll have as a student here? Chat to our staff or attend a talk on your chosen topic. See page 30 for the schedule.

⌚ 1-2 HOURS



Explore accommodation



Take a look around our halls of residence and talk to students about what it's like to live there. Speak to staff at City and Collegiate Campus about how to visit our accommodation sites today, you can choose which ones to view on page 40.

⌚ 1-2 HOURS

Take a campus tour



Imagine yourself as a Hallam student and take a tour of our campuses including our 24-hour libraries. There are maps of our campuses on pages 44–48. Visit the stand at any time during the day.

City Campus tour - Meet at Level 5, Owen Building
Collegiate Campus tour - Meet at Heart of the Campus

⌚ 45 MINS

Take a city tour



Choosing a university is about more than the course – the city must be right too. Sheffield's a brilliant place to live and study – make sure you save some time to explore. You can also take a walking tour of the city if you wish. Take a look at page 44 to see how our campus fits into the city.

City centre tours set off at 11.30am, 1.30pm and 2.30pm from Level 5, Owen Building.

⌚ 45 MINS





HOW TO GET AROUND

We're a large institution with two campuses and hundreds of learning spaces - you can find maps and directions on pages 44-48. Just ask for help if you're unsure and we can help you navigate to where you need to be!

City or Collegiate Campus?

Different subjects are based across both our City and Collegiate campuses, so it is important you are at the correct one for your course. Check where your course subject talks are (from page 8 onwards) and make sure you are heading for the right one.

Moving between campuses

It's just 30 minutes' walk or you can take our free shuttle bus between our two campuses between 9am-3.30pm. Please allow 30 mins travel time.

- If you're at City Campus, get the bus from Brown Street.
- If you're at Collegiate Campus, get the bus from Collegiate Crescent.

Find campus maps and more detailed directions on pages 44-48.

How long does it take to get between buildings?

From the main entrance at our Owen Building, City Campus it is:

- a 2 minute walk to the Atrium and the Howard, Norfolk and Surrey buildings
- a 5 minute walk to the Stoddart building and a further 1 minute to the Charles Street building
- a 5 minute walk to the Cantor building
- a 5 minute walk to Eric Mensforth and Hertha Ayrton buildings
- a 10 minute walk to Head Post Office building

From our main entrance at Heart of the Campus, Collegiate Campus it is:

- a 5 minute walk to Robert Winston Building
- a 5 minute walk to Mary Badland Lecture Theatre
- a 5 minute walk to the Main Building

Ask for help

We've posted friendly student ambassadors and staff all over our campus so you'll never be too far from someone who can direct you. Just ask if you need pointing in the right direction.

City Campus	Collegiate Campus
Howard Street, Sheffield, S1 1WB (if you're using satnav please use S1 4RF) what3words: ///rubble.spin.fleet	Collegiate Crescent, Sheffield, S10 2BP what3words: ///royal.send.seats





OUR TALKS & STANDS



Course talks and stands	10
Support talks and stands	30

COURSE TALKS AND STANDS

Introductory talks	Where	When
Interested in a career in Allied Health (Diagnostic Radiography, Occupational Therapy, Operating Department Practice, Paramedic Science, Physiotherapy, Radiotherapy and Oncology)? – begin your journey here with an overview of the exciting and diverse opportunities available.	Mary Badland Lecture Theatre, Collegiate Campus	10.45–11.30am
Nursing and Midwifery Introduction	Room HC.0.06, Heart of the Campus, Collegiate Campus	10.45–11.30am
Social Work and Social Care Introduction	Room HC.0.32, Heart of the Campus, Collegiate Campus	11–11.30am
The Sheffield Business School Student Experience	Langsett Building, City Campus	9.45–10.15am 12–12.30pm

Course Talk Subject Area	Where	When
Accounting and Finance	Langsett Building, City Campus	10.30–11.45am 12.30–1.45pm
Acting and Performance	Arundel Gate Court Building, City Campus	11.15am–12pm

*This course is also available to study with a foundation year. For more information about studying the courses with foundation years please speak to our academic teams at the course stands.



City Campus



Collegiate Campus

Courses covered	Further details	Course stand name and location
Diagnostic Radiography, Occupational Therapy, Operating Department Practice, Paramedic Science, Physiotherapy and Radiotherapy and Oncology.	An introduction to the courses within the Allied Health Professions.	Please visit your course stand for more information.
Nursing (Adult), Nursing (Child), Nursing (Mental Health), Midwifery and Learning Disability Nursing and Social Work.	An introduction to the courses covered by the Department of Nursing and Midwifery.	Please visit your course stand for more information.
Social Work, and Working with Children, Young People and Families	An introduction to the courses covered by the Department of Social Work and Social Care and Community Studies.	Please visit your course stand for more information.
Join us to hear about the Sheffield Business School Student Experience. You will be welcomed by a member of the Sheffield Business School Leadership Team as we share the details of our applied learning offer to all Business School students.	Join us to find out what it's like to study at Sheffield Business School and discover our applied learning offer to all students.	For more information about your specific course, please visit the relevant course stand.

Courses covered	Further details	Course stand name and location
This talk covers Accounting and Finance*, Accounting and Finance (Management)*, Business Management and Finance.	This time includes an introduction to your course and a taster session, where you will experience a short lesson from our specialist tutors and discover how we deliver content on our courses.	Accounting, Banking and Finance stand, Langsett Building
This talk covers Acting and Performance and Performance and Professional Practice (top up).	You can visit the course stand for more information or go on a campus tour to see our teaching and learning facilities. You may also be interested in our performance workshop, see below for details.	Film and Theatre stand Atrium, Level 2



COURSE TALKS AND STANDS

Course Talk Subject Area	Where	When
Acting and Performance Workshop	Arundel Gate Court Building, City Campus	12–12.45pm
Airline and Airport Management	Langsett Building, City Campus	10.30–11.45am
Animation	Room 16.2.01, Head Post Office, City Campus	10.55am–12.15pm 1.25–2.45pm
Architecture	Peak Lecture Theatre, Level 5, Owen Building, City Campus	12.15–1.30pm
Biosciences and Chemistry	Pennine Lecture Theatre, Atrium Level 2, City Campus	11.30am–1.15pm
Building Surveying	Room 210, Norfolk Building, City Campus	11am–12.55pm
Business: International Business and Languages	Langsett Building, City Campus	10.30am–12.15pm 1–2.45pm

*This course is also available to study with a foundation year. For more information about studying the courses with foundation years please speak to our academic teams at the course stands.



City Campus



Collegiate Campus

Courses covered	Further details	Course stand name and location
This talk covers Acting and Performance and Performance and Professional Practice (top up).	Join our inspiring performance teaching staff for a practical workshop where you'll sample some of the activities and performance styles explored at Sheffield Hallam. No preparation is needed - just come prepared to join in. It's a friendly, supportive opportunity to get to know us and other students you might study with.	Film and Theatre stand, Atrium, Level 2
This talk covers Airline and Airport Management* and Airline and Airport Management (top up).	This time includes a welcome talk and taster session followed by a tour of the facilities and teaching spaces you will use as part of your studies.	Aviation, Tourism and Hospitality Management stand, Langsett Building
This talk covers Animation*.	This time includes an overview of the course, a Q&A with tutors and current students and an optional tour of the Head Post Office and other specialist spaces.	Head Post Office Building
This talk covers Architecture.	This time includes an optional 30 minute tour of teaching and learning facilities.	Architecture stand, Atrium Level 2
This talk covers Biochemistry*, Biology*, Biomedical Science*, Biomedicine and Health Science* and Chemistry*.	This time includes an optional 45 minute interactive lab experience.	Biosciences stand and Chemistry stand, Atrium Level 2
This talk covers Building Surveying.	This talk includes an introduction to the department including a brief overview of our built environment courses. After this you will be taken to Norfolk 503 for the Building Surveying course talk. There will be an optional 30 minute activity at 12.25pm following the course talk.	Construction Project Management, Building and Quantity Surveying stand, Atrium Level 2
This talk covers International Business*, International Business (European Partnership Programme), International Business with Languages (French)*, International Business with Languages (Spanish)*.	This time includes a taster session where you'll experience a short lesson from our specialist tutors and discover how we deliver content on our courses. You may also be interested in the Sheffield Business School Student Experience talk (see page 10).	International Business stand and Languages stand, Langsett Building



COURSE TALKS AND STANDS

Course Talk Subject Area	Where	When
Business, Management and Enterprise	Langsett Building, City Campus	10.15am–11.30am 12.30pm–1.45pm
Children and Childhoods	Room 12.4.12, Charles Street Building, City Campus	11.30am–12.45pm
Climate, Sustainability and Environmental Management	Room 209, Norfolk Building, City Campus	10.45am–12.15pm
Computer Science and Software Engineering	Room 9130, Cantor Building, City Campus	11.15am–12.30pm 2–3.15pm
Construction Project Management	Room 210, Norfolk Building, City Campus	11am–12.55pm
Creative Writing - please see English and Creative Writing on page 16		
Criminology	Peak Lecture Theatre, Level 5, Owen Building	10.45–11.45am
Criminology and Psychology	Peak Lecture Theatre, Level 5, Owen Building	1.30–2.30pm
Criminology and Sociology	Room 12.5.08, Charles Street Building, City Campus	12 –1pm
Cyber and Forensics	Room 9135, Cantor Building, City Campus	11.15am–12.30pm 2–3.15pm

*This course is also available to study with a foundation year. For more information about studying the courses with foundation years please speak to our academic teams at the course stands.

City Campus Collegiate Campus

Courses covered	Further details	Course stand name and location
This talk covers Business Management and Enterprise Management*, Business Studies*, Business Management*, Business and Management with Psychology*, Business and Management with Law*, Business Management one year top up.	You can visit the course stand for more information or go on a campus tour to see our teaching and learning facilities. You may also be interested in the Sheffield Business School Student Experience talk (see page 10).	Business, Management and Enterprise stand, Langsett Building
This talk covers Children and Childhoods.	This time includes an introduction to our education courses for the first 15 minutes.	Children and Childhoods stand, Charles Street Building
Climate, Sustainability and Environmental Management.	This time includes an optional 30 minute tour of teaching and learning facilities.	Geography, Climate, Sustainability and Environmental Management stand, Atrium Level 2
This talk covers Computer Science*, Software Engineering*, Computer Science with Artificial Intelligence*, Artificial Intelligence with Robotics*.	This time includes an introduction to your course, followed by a taster session and tour of facilities.	Computing stand, Cantor Building Atrium
This talk covers Construction Project Management.	This talk includes an introduction to the department including a brief overview of our built environment courses. After this you will be taken to Norfolk 502 for the Construction Project Management course talk. There will be an optional 30 minute activity at 12.25pm following the course talk.	Construction Project Management, Building and Quantity Surveying stand, Atrium Level 2
This talk covers Criminology*.	Visit the course stand for more information. You can also go on a campus tour to view our teaching and learning facilities.	Criminology stand, Charles Street Building
This talk covers Criminology and Psychology*.	Visit the course stand for more information. You can also go on a campus tour to view our teaching and learning facilities.	Criminology stand, Charles Street Building
Criminology and Sociology*	Visit the course stand for more information. You can also go on a campus tour to view our teaching and learning facilities.	Criminology stand, Charles Street Building
This talk covers Cyber Security*, Cyber Security with Forensics*.	This time includes an introduction to your course, followed by a taster session and tour of facilities.	Computing stand, Cantor Building Atrium



COURSE TALKS AND STANDS

Course Talk Subject Area	Where	When
Diagnostic Radiography	Room E.0.01, Robert Winston Building Annex, Collegiate Campus	11.45am–1.15pm 2–3.15pm
Digital Media Production	Room 920, Owen Building, City Campus	11am–12pm 2.15–3.15pm
Economics and Financial Services	Langsett Building, City Campus	10.30am–12pm 1pm–2.30pm
Education, Psychology and Counselling	Room 12.4.12, Charles Street Building, City Campus	1–2.15pm
Engineering	Hertha Ayrton STEM Centre, City Campus	10.30am–12pm 1pm–2.30pm
English and Creative Writing	Room 1028, Owen Building, City Campus	12.45–1.30pm
Esports Management	Langsett Building, City Campus	12pm–1.15pm
Events Management	Langsett Building, City Campus	12.30pm–2pm
Fashion Design	Room 16.3.01, Head Post Office, City Campus	10.55am–12.15pm 1.25–2.45pm

*This course is also available to study with a foundation year. For more information about studying the courses with foundation years please speak to our academic teams at the course stands.

City Campus Collegiate Campus

Courses covered	Further details	Course stand name and location
The first talk at 11.45am covers both Diagnostic Radiography and Radiotherapy and Oncology courses. The 2pm talk just covers Diagnostic Radiography.	This time includes an optional 45 minute interactive experience in the teaching and learning facilities. For a tour of our clinical skills teaching environments, book onto a tour from room HC.0.07, Heart of the Campus Building. Tours take place between 9.30am–3pm and last 20 minutes. You may also like to attend our introductory talk for Allied Health (see page 10).	Diagnostic Radiography stand, Room F343, Robert Winston Building
This talk covers Digital Media Production*.	This time includes an optional 30 minute tour of teaching and learning facilities.	Digital Media and Games stand, Atrium Level 2
This talk covers Economics*, Business Economics*, Economics and Finance*, Banking and Finance*, Financial Trading and Investment*.	This time includes an introduction to your course and a taster session, where you will experience a short lesson from our specialist tutors and discover how we deliver content on our courses.	Economics stand and Financial Trading and Investment Management stand, Langsett Building
This talk covers Education, Psychology and Counselling*.	This time includes an introduction to our education courses for the first 15 minutes.	Education, Psychology and Counselling stand, Charles Street Building
This talk covers Aerospace Engineering*, Automotive Engineering*, Chemical Engineering*, Mechanical Engineering*, Mechatronic and Robotic Engineering*, Electrical and Electronic Engineering* and Electrical Engineering (top–up).	This session includes an introduction to the engineering courses followed by a taster teaching experience where you will discover more about your chosen course and explore the labs and workshops you will learn in. You will meet engineering academics and students, including members of our Formula Student Team (SHU Racing).	Engineering stand, Hertha Ayrton STEM Centre
This talk covers English* and Creative Writing*.	Visit the course stand for more information. You can also go on a campus tour to view our teaching and learning facilities.	English and Creative Writing stand, Atrium Level 2
This talk covers Esports Management*.	Visit the course stand for more information.	Esports Management stand, Langsett Building
This talk covers Events Management*, Events Management (top up), Events and Leisure Management (top up).	This time includes an introduction to the portfolio of courses and a short taster session.	Events Management stand, Langsett Building
This talk covers Fashion Design*.	This time includes an overview of the course, a Q&A with tutors and current students and an optional tour of the Head Post Office.	Head Post Office Building



COURSE TALKS AND STANDS

Course Talk Subject Area	Where	When
Fashion Management and Communication	Room 16.0.05, Head Post Office, City Campus	10.55am–12.15pm 1.25–2.45pm
Film and TV Production	Room 123 The Void, Owen Building, City Campus	10–11am 1–2pm
Film Studies	Room 123 The Void, Owen Building, City Campus	11.30am–12.15pm
Financial Services (please see Economics and Financial Services)		
Fine Art	Room 16.2.08, Head Post Office, City Campus	10.55am–12.15pm 1.25–2.45pm
Food and Nutrition	Room 1239, Owen Building, City Campus	10.30–11.45am
Games Design	Room 9130, Cantor Building, City Campus	10–11am 12.45–1.45pm
Games Programming	Room 9005, Cantor Building, City Campus	11.15am–12.30pm 2pm–3.15pm
Geography	Room 210, Norfolk Building, City Campus	12.30–2pm
Graphic Design	Room 16.2.02, Head Post Office, City Campus	10.55am–12.15pm 1.25–2.45pm
History	Room 1028, Owen Building, City Campus	11.45am–12.30pm

*This course is also available to study with a foundation year. For more information about studying the courses with foundation years please speak to our academic teams at the course stands.



City Campus



Collegiate Campus

Courses covered	Further details	Course stand name and location
This talk covers Fashion Management and Communication*.	This time includes an overview of the course, a Q&A with tutors and current students and an optional tour of the Head Post Office.	Head Post Office Building
This talk covers Film and TV Production*.	This time includes an optional 30 minute tour of teaching and learning facilities.	Film and Theatre stand, Atrium Level 2
This talk covers Film Studies*.	You can visit the course stand for more information or go on a campus tour to see our teaching and learning facilities	Film and Theatre stand, Atrium Level 2
This talk covers Fine Art*.	This time includes an overview of the course, a Q&A with tutors and current students and an optional tour of the Head Post Office.	Head Post Office Building
This talk covers Food and Nutrition*, Human Nutrition and Health*, Food and Nutrition (top up), Nutrition, Diet and Wellbeing (top up).	This time includes an optional tour of teaching and learning facilities and networking opportunity of up to an hour.	Food and Nutrition stand, Langsett Building
This talk covers Game Art* and Game Design Development*.	This time includes an optional 30 minute tour of teaching and learning facilities.	Digital Media and Games stand, Atrium Level 2
This talk covers Computer Science for Games*, Computer Games Technologies*	This time includes an introduction to your course, followed by a taster session and tour of facilities.	Computing stand, Cantor Building Atrium
This talk covers Geography.	This time includes an optional 30 minute tour of teaching and learning facilities.	Geography, Climate, Sustainability and Environmental Management stand, Atrium Level 2
This talk covers Graphic Design*.	This time includes an overview of the course, a Q&A with tutors and current students and an optional tour of the Head Post Office.	Head Post Office Building
This talk covers History*.	You can also visit the course stand for more information or go on a campus tour to view our teaching and learning facilities.	History stand, Atrium Level 2



COURSE TALKS AND STANDS

Course Talk Subject Area	Where	When
Illustration	Room 16.2.06, Head Post Office, City Campus	10.55am–12.15pm 1.25–2.45pm
Information Technology with Business Studies	Room 9002, Cantor Building, City Campus	11.15am–12.30pm 2pm–3.15pm
Interior Architecture and Design	Room 16.1.08, Head Post Office, City Campus	10.55am–12.15pm 1.25–2.45pm
Journalism and Public Relations with Media	Room 9235, Cantor Building, City Campus	11.15am–12.15pm 1.45–2.45pm
Languages - please see Business: International Business and Languages on page 12		
Law	The Dorothy Fleming Lecture Theatre, Charles Street Building, City Campus	1–2pm
Marketing	Langsett Building, City Campus	11.30am–12.45pm 1.45–3pm
Mathematics	Room 9131, Cantor Building, City Campus	11.15am–12.30pm 2pm–3.15pm
Media and Communications	Room 9234, Cantor Building, City Campus	12.30–1.30pm
Midwifery	Room HC.0.06, Heart of the Campus, Collegiate Campus	12.30–1.30pm 2.15–3.15pm

*This course is also available to study with a foundation year. For more information about studying the courses with foundation years please speak to our academic teams at the course stands.



City Campus



Collegiate Campus

Courses covered	Further details	Course stand name and location
This talk covers Illustration*.	This time includes an overview of the course, a Q&A with tutors and an optional tour of the Head Post Office.	Head Post Office Building
This talk covers Information Technology with Business Studies*	This time includes an introduction to your course, followed by a taster session and tour of facilities.	Computing stand, Cantor Building Atrium
This talk covers Interior Architecture and Design*.	This time includes an overview of the course, a Q&A with tutors and an optional tour of the Head Post Office.	Head Post Office Building
This talk covers Journalism and Public Relations with Media*	This time includes an optional 30 minute tour of teaching and learning facilities.	Media, Journalism and PR stand, Atrium Level 2
This talk covers Law* and Law with Criminology*.	You can visit the course stand for more information or go on a campus tour to see our teaching and learning facilities.	Law stand Charles Street Building
This talk covers Business Management and Marketing*, Marketing*, Marketing Communications and Advertising*, Digital Marketing*, Marketing with Psychology*.	This time includes a taster session where you will experience a short lesson from our specialist tutors and discover how we deliver content on our courses.	Marketing stand, Langsett Building
This talk covers Mathematics.	This time includes an introduction to your course, followed by a taster session and tour of facilities.	Mathematics stand, Cantor Building Atrium
This talk covers Media and Communications	This time includes an optional 30 minute tour of teaching and learning facilities.	Media, Journalism and PR stand, Atrium Level 2
This talk covers Midwifery.	This time includes an optional 30 minute interactive experience in the teaching and learning facilities. For a tour of our clinical skills teaching environments, book onto a tour from room HC.0.07, Heart of the Campus Building. Tours take place between 9.30am–3pm and last 20 minutes.	Midwifery stand, Room HC.0.29, Heart of the Campus



COURSE TALKS AND STANDS

Course Talk Subject Area	Where	When
Nursing (Adult)	Room HC.0.06, Heart of the Campus, Collegiate Campus	11.45am–12.15pm 1.15–1.45pm
Nursing (Child)	Herbert Wing 2, Collegiate Campus	11.45–12.15pm 2–2.30pm
Nursing (Learning Disability) and Social Work	Room HC.0.15, Heart of the Campus, Collegiate Campus	11.45am–1pm
Nursing (Mental Health)	Room HC.0.32, Heart of the Campus, Collegiate Campus	12.30–1.30pm
Occupational Therapy	Room HC.0.32, Heart of the Campus, Collegiate Campus Room E.0.03, Robert Winston Building Annex, Collegiate Campus	11.45am–12.45pm 1.45–2.45pm

*This course is also available to study with a foundation year. For more information about studying the courses with foundation years please speak to our academic teams at the course stands.



City Campus



Collegiate Campus

Courses covered	Further details	Course stand name and location
This talk covers Nursing (Adult)*.	For a tour of our clinical skills teaching environments, book onto a tour from room HC.0.07, Heart of the Campus Building. Tours take place between 9.30am–3pm and last 20 minutes.	Adult Nursing stand, Room HC 1.52, Heart of the Campus
This talk covers Nursing (Child).	For a tour of our clinical skills teaching environments, book onto a tour from room HC.0.07, Heart of the Campus Building. Tours take place between 9.30am–3pm and last 20 minutes.	Child Nursing stand, Rooms HC 1.53 & HC 1.54, Heart of the Campus
This talk covers Nursing (Learning Disability) and Social Work*.	This time includes an optional 45 minute demonstration of innovative teaching and learning methods used on the course. For a tour of our clinical skills teaching environments, book onto a tour from room HC.0.07, Heart of the Campus Building. Tours take place between 9.30am–3pm and last 20 minutes.	Nursing (Learning Disability) and Social Work stand, Heart of the Campus
This talk covers Nursing (Mental Health)*.	This time includes an optional 30 minute demonstration of innovative teaching and learning methods used on the course. For a tour of our clinical skills teaching environments, book onto a tour from room HC.0.07, Heart of the Campus Building. Tours take place between 9.30am–3pm and last 20 minutes.	Mental Health Nursing stand, Room HC 1.52, Heart of the Campus
This talk covers Occupational Therapy*.	This time includes an optional 30 minute interactive experience in the teaching and learning facilities. For a tour of our clinical skills teaching environments, book onto a tour from room HC.0.07, Heart of the Campus Building. Tours take place between 9.30am–3pm and last 20 minutes. You may also like to attend our introductory talk for Allied Health (see page 10).	Occupational Therapy stand Room F335, Robert Winston Building.

COURSE TALKS AND STANDS

Course Talk Subject Area	Where	When	
Operating Department Practice	Room F339, Robert Winston Building, Collegiate Campus	1.15–2.15pm	
Paramedic Science	Room F518, Robert Winston Building, Collegiate Campus	12.30–1.30pm 2–3pm	
Photography	Room 16.0.02, Head Post Office, City Campus	10.55am–12.15pm 1.25–2.45pm	
Physics	Room 4226, Sheaf Building, City Campus	11.45am–12.30pm 1.45–2.30pm	
Physiotherapy	Room F518, Robert Winston Building, Collegiate Campus	11.45am–1pm 1.15–2.30pm	

*This course is also available to study with a foundation year. For more information about studying the courses with foundation years please speak to our academic teams at the course stands.



City Campus



Collegiate Campus

Courses covered	Further details	Course stand name and location
This talk covers Operating Department Practice*.	<p>This time includes an optional 30 minute tour of teaching and learning facilities.</p> <p>You can also view live demonstrations of equipment and teaching techniques used on the course at our demonstrations area in the Crescent Café in the Robert Winston Building at 12-12.30pm and 2.30-3pm.</p> <p>For a tour of our clinical skills teaching environments, book onto a tour from room HC.0.07, Heart of the Campus Building. Tours take place between 9.30am–3pm and last 20 minutes. You may also like to attend our introductory talk for Allied Health (see page 10).</p>	Operating Department Practice stand Room F336, Robert Winston Building
This talk covers Paramedic Science.	<p>This time includes an optional 30 minute demonstration of teaching and learning facilities.</p> <p>For a tour of our clinical skills teaching environments, book onto a tour from room HC.0.07, Heart of the Campus Building. Tours take place between 9.30am–3pm and last 20 minutes. You may also like to attend our introductory talk for Allied Health (see page 10).</p>	Paramedic Science stand, Room F310, Robert Winston Building
This talk covers Photography*.	This time includes an overview of the course, a Q&A with tutors and current students and an optional tour of the Head Post Office and other specialist spaces.	Head Post Office Building
This talk covers Physics*.	This time includes a course talk and an optional tour of teaching and learning facilities.	Physics stand, Hertha Ayrton STEM Centre
This talk covers Physiotherapy.	<p>This time includes an optional 45 minute interactive experience in the teaching and learning facilities.</p> <p>For a tour of our clinical skills teaching environments, book onto a tour from room HC.0.07, Heart of the Campus Building. Tours take place between 9.30am–3pm and last 20 minutes. You may also like to attend our introductory talk for Allied Health (see page 10).</p>	Physiotherapy stand, Room F407, Robert Winston Building

COURSE TALKS AND STANDS

Course Talk Subject Area	Where	When
Politics and International Relations	Room 12.6.06, Charles Street Building, City Campus	11–11.45am
Primary and Early Years	The Dorothy Fleming Lecture Theatre, Charles Street Building, City Campus	10.45–11.30am
Product Design	Room 16.1.08, Head Post Office, City Campus	10.55am–12.15pm 1.25–2.45pm
Professional Policing	Room 12.6.02, Charles Street Building, City Campus	12–1pm
Psychology	The Dorothy Fleming Lecture Theatre, Charles Street Building, City Campus	11.45am–12.45pm 2.15–3.15pm
Quantity Surveying	Room 210, Norfolk Building, City Campus	11am–12.55pm
Radiotherapy and Oncology	Room E.0.01, Robert Winston Building Annex, Collegiate Campus	11.45am–1.15pm 1–2.30pm
Real Estate	Langsett Building, City Campus	11am–12.15pm

*This course is also available to study with a foundation year. For more information about studying the courses with foundation years please speak to our academic teams at the course stands.



City Campus



Collegiate Campus

Courses covered	Further details	Course stand name and location
This talk covers Politics and International Relations*.	This time includes an optional 15 minute Q & A session.	Politics and International Relations stand, Charles Street Building
This talk covers Primary Education (5–11) with QTS and Early Years and Primary Education (3–7) with QTS. These are three-year undergraduate courses leading to a degree and Qualified Teacher Status (QTS).	This talk covers Primary Education (5–11) with QTS and Early Years and Primary Education (3–7) with QTS. These are three-year undergraduate courses leading to a degree and Qualified Teacher Status (QTS).	Primary 3–7, Primary 5–11 stand, Charles Street Building
This talk covers Product Design*.	This time includes an overview of the course, a Q&A with tutors and an optional tour of the Head Post Office.	Head Post Office Building
This talk covers Professional Policing*.	You can visit the course stand for more information or go on a campus tour to see our teaching and learning facilities.	Professional Policing stand, Charles Street Building
This talk covers Psychology*.	You can visit the course stand for more information or go on a campus tour to see our teaching and learning facilities.	Psychology stand, Charles Street Building
This talk covers Quantity Surveying.	This talk includes an introduction to the department including a brief overview of our Built Environment courses. After this you will be taken to Norfolk 505 for the Quantity Surveying course talk. There will be an optional 30 minute activity at 12.25pm following the course talk.	Construction Project Management, Building and Quantity Surveying stand, Atrium Level 2
The first talk at 11.45am covers both Diagnostic Radiography and Radiotherapy and Oncology*. The 1pm talk just covers Radiotherapy and Oncology*.	This time includes an optional 45 minute interactive experience in the teaching and learning facilities. For a tour of our clinical skills teaching environments, book onto a tour from room HC.0.07, Heart of the Campus Building. Tours take place between 9.30am–3pm and last 20 minutes. You may also like to attend our introductory talk for Allied Health (see page 10).	Radiotherapy and Oncology stand, Room F341, Robert Winston Building
This talk covers Real Estate.	This time includes an introduction to your course and a taster session, where you will experience a short lesson from our specialist tutors and discover how we deliver content on our courses.	Real Estate stand, Langsett Building

COURSE TALKS AND STANDS

Course Talk Subject Area	Where	When
Social Work	Room HC.0.32, Heart of the Campus, Collegiate Campus	1.15–2.15pm
Sociology	Room 12.5.08, Charles Street Building, City Campus	1.15–2.15pm
Sport	Herbert Wing 1, Main Hall, Collegiate Campus	11am–12.45pm 1.15–3pm
Sports Journalism	Room 9231, Cantor Building, City Campus	10.45–11.45am 1.15–2.15pm
Tourism and Hospitality Management	Langsett Building, City Campus	12.30pm–2pm
Working with Children, Young People and Families	Room HC.0.17, Heart of the Campus, Collegiate Campus	11.45am–12.45pm



*This course is also available to study with a foundation year. For more information about studying the courses with foundation years please speak to our academic teams at the course stands.

City Campus Collegiate Campus

Courses covered	Further details	Course stand name and location
This talk covers Social Work.	This time includes an optional 30 minute demonstration of innovative teaching and learning methods used on the course.	Social Work and Social Care stand, Heart of the Campus
This talk covers Sociology*.	This time includes an optional 15 minute Q & A session.	Sociology stand, Charles Street Building
This talk covers Physical Activity Sport and Health*, Physical Education and School Sport*, Sport and Exercise Science*, Sport Coaching*, Sport Business Management*	This time includes a 30 minute introduction to our sport courses, followed by a 30 minute talk about the specific course you are interested in. After this there will be an optional 30 minute demonstration of innovative teaching and learning methods used on the course.	Sport stand, Heart of the Campus
This talk covers Sports Journalism*.	This time includes an optional 30 minute tour of teaching and learning facilities.	Media, Journalism and PR stand, Atrium Level 2
This talk covers International Tourism and Hospitality Business Management*, International Tourism and Hospitality Business Management (top up), International Hospitality Business Management (top up).	This time includes a welcome talk and taster session followed by a tour of the facilities and teaching spaces you will use as part of your studies.	Aviation, Tourism and Hospitality Management stand, Langsett Building.
This talk covers the Working with Children, Young People and Families courses.	This time includes an optional 30 minute demonstration of innovative teaching and learning methods used on the course.	Working with Children, Young People and Families stand, Heart of the Campus



SUPPORT TALKS & STANDS

What do you want to find out about?	Talks: where and when?		Chat to us all day from 9.30
Welcome talk Start your day with a brief introduction to Sheffield Hallam University from our staff and students.	City Campus Pennine Lecture Theatre, Atrium Level 2, 9.45–10.15am 10.30–11am	Collegiate Campus HC.0.06, Heart of the Campus 10–10.30am	Speak to our friendly students and staff at any point today if you have any questions – we're happy to help
Accommodation Speak to our staff at City Campus for an overview of our accommodation options and advice on applying.	City Campus Pennine Lecture Theatre 12.45–13.15pm		City Campus Accommodation Services, Howard Street (opposite main entrance) Collegiate Campus Heart of the Campus (for more information about how to visit our accommodation sites)
Admissions: Applying to Sheffield Hallam University Chat to us about UCAS timelines, personal statements, and the university application process. Please note: there is no talk for this support area			City Campus Heartspace Atrium, Level 2, Owen Building Collegiate Campus Heart of the Campus and Robert Winston Building
Degree Apprenticeships Earn while you learn and progress into highly skilled careers.	City Campus Room 1025, Owen Building 11.30am–12pm	City Campus Heartspace Atrium, Level 2, Owen Building	
Library & Skills Centre Chat to us about the Library's 24/7/365 spaces and resources, the sessions we offer to support your research and academic skills development, and how we support every student at Sheffield Hallam University to become an independent learner and to be successful in their studies. Please note: there is no talk for this support area.			City Campus Heartspace Atrium, Level 2, Owen Building Collegiate Campus Heart of the Campus
Minoritised student groups - support on offer Come and speak to current students about their experiences of studying at Sheffield Hallam as a student from a minority ethnic background. Please note: there is no talk for this support area.			City Campus Heartspace Atrium, Level 2 Owen Building Collegiate Campus Heart of the Campus



SUPPORT TALKS & STANDS

What do you want to find out about?	Talks: where and when?		Chat to us all day from 9.30
Parent Ambassadors Speak to one of our parent ambassadors to find out more about their experiences of supporting a child at university. Please note: there is no talk for this support area.			City Campus Heartspace Atrium, Level 2 Owen Building Collegiate Campus Heart of the Campus
SHU Progress: applicant support scheme SHU Progress provides support for applicants whose personal circumstances might mean that there are barriers to going to university such as students who are care leavers, carers or estranged from their families (amongst other personal circumstances). Come for a chat at our stand to see how we can help. Please note: SHU Progress is covered in the Supporting you at Hallam talk (see below).			City Campus Heartspace Atrium, Level 2, Owen Building Collegiate Campus Heart of the Campus
Sport Hallam: Sport and Fitness Opportunities Sport Hallam provides a wide range of programmes, initiatives and services to support you to get active, meet people, keep fit, look after your mental and physical health, try something new or continue with your hobby or passion. We pride ourselves on our inclusive approach, supporting beginners and people new to sport right through to elite and dual career athletes. Come and talk to our team today. Please note: there is no talk for this support area.			City Campus Heartspace Atrium, Level 2 Owen Building Collegiate Campus Heart of the Campus
Sport Hallam Performance Athlete We are committed to supporting sporting excellence amongst our students. Find out if you're eligible for our support programme for high performance athletes, which allows you to balance your studies with achieving your sporting potential - whatever course you're studying	Collegiate Campus Room HC.0.32, Heart of the Campus 10-10.30am		Collegiate Campus Sport Hallam stand, Heart of the Campus
Supporting you at Hallam Sheffield Hallam offers a wide range of support and guidance related to your course and personal wellbeing. This talk will give an overview of the services available to you, both before you arrive (through our Access Schemes) and during your time here.	City Campus Room 1025, Owen Building 1.30-2pm	Collegiate Campus Room HC.0.16, Heart of the Campus 1-1.30pm	City Campus Heartspace Atrium, Level 2 Owen Building Collegiate Campus Heart of the Campus



SUPPORT TALKS & STANDS

What do you want to find out about?	Talks: where and when?	Chat to us all day from 9.30
Hallam Students' Union We're your champions, campaigning for a university experience that gives you the best value for money. We're your gateway to a world of exciting events and enriching new experiences, expert advice and support when you need it most, and opportunities to develop skills that give you the edge when applying for your dream job. Whether you need guidance on how to live your best student life, or feel your academic experience isn't living up to expectations, your Students' Union is here to assist you every step of the way. Look at what we get up to on socials with @hallamsu, download our app called Hallam SU, or check out our website hallamstudentsunion.com. Please note: there is no talk for this support area.		City Campus Heartspace Atrium, Level 2 Owen Building Collegiate Campus Heart of the Campus
Your future career From the moment you arrive at Sheffield Hallam, we're here to help you with your future career plans. Talk to us about how we can make you ready for work with work experience, work opportunities and working for yourself. You can also join us for our talk: Your placement year – put your learning into practice.		City Campus Heartspace Atrium, Level 2 Owen Building Collegiate Campus Heart of the Campus
Your placement year - put your learning into practice Hear from careers experts and students who have recently completed a placement about the benefits of a placement year. You'll find out what a placement is, and the range of options available to you, including setting up your own business. You'll learn why it's an important part of your course and how it can positively impact your degree result and your future graduate career. Please note, this talk does not cover placements for education and health courses as that will be covered in the subject specific talks for those areas.	City Campus Careers and Employability Centre Heartspace Atrium, Level 2 Owen Building 12.15–12.45pm	Collegiate Campus Room HC.0.16, Heart of the Campus 12.15–12.45pm Please visit our Careers stand to find out more about placement years (above). You can also visit your course stand for more information about placement opportunities for your course.

SUPPORT TALKS & STANDS

What do you want to find out about?	Talks: where and when?	Chat to us all day from 9.30
Student Support and Funding Talk to us about student loans, the Disabled Student Allowance application process, and the wide range of support we offer. See page 32 for details of the Supporting you at Hallam talk. Please note: there is no talk for this support area.		City Campus Heartspace Atrium, Level 2 Owen Building Collegiate Campus Heart of the Campus
Student Work Opportunities Are you thinking about part-time work alongside your studies? Speak to one of our Student Recruitment, Events and Marketing Ambassadors to find out more about the flexible part-time work opportunities on offer through our Student Ambassador Programme. Please note: there is no talk for this support area.		City Campus Heartspace Atrium, Level 2 Owen Building

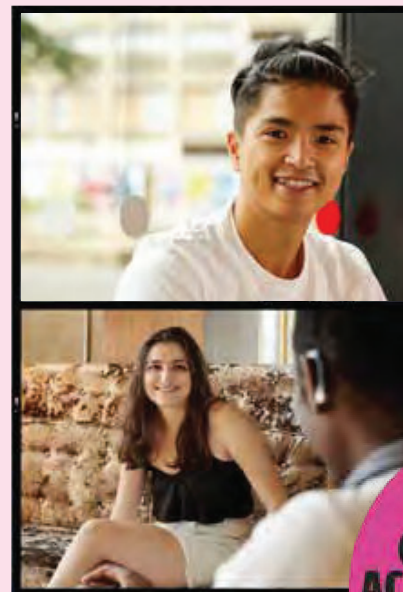




OUR ACCOMMODATION



ACCOMMODATION TO VISIT TODAY



**GUARANTEED
ACCOMMODATION
CLOSE TO
CAMPUS**

If you're thinking about leaving home for university, we make it easy. We have affordable halls of residence to suit all tastes, from large and sociable to small and friendly — and they come with all the support you need to make it a home from home.

What's more, when you apply for our halls we'll make sure you're living with other Sheffield Hallam students, so you'll be making friends from day one.

See 360 degree videos of all our halls and apply at shu.ac.uk/accommodation

**NO HIDDEN
COSTS
ALL BILLS
INCLUDED**



Take A Tour



ACCOMMODATION TO VISIT TODAY

Map number	Name and Postcode	Description	Prices from per week
 2	 Béton House S2 5DT	Unique 8-bed townhouses located in Sheffield's famous Park Hill development, combining the best of independent student living with extra amenities, safety, comfort and support. All rooms have en-suite bathrooms and share a kitchen/living area.	£128.00
 4	 Central Quay S3 8RA	Large hall on the banks of the river Don in the heart of Kelham Island. Includes free on-site gym, study room, and common room. All rooms have en-suite bathrooms.	£99.00
 5	 The Elements S2 4FQ	Modern en-suite flats in a vibrant student hub situated in a prime location near supermarkets. The property benefits from a large study room, a free gym, cycle storage, on-site management, wheelchair access and a common room covering 2 floors.	£147.00
 6	 Exchange Works S1 4RE	The closest halls to City Campus, which is just a two-minute walk away. Includes a common room, an outdoor courtyard with space to play badminton, a ping pong table and a barbecue and seating area.	£136.00
 7	 The Forge S2 4QG	Includes a free gym, bookable study room, car parking and on-site management. Single en-suite rooms with communal living space.	£103.00
 8	 The Gate S1 4RB	Ideally located in Sheffield city centre, The Gate offers a mix of 3, 4, 5 & 7 bed flats, and is just a 3-minute walk to City Campus! Includes common room, study spaces, free gym, and sky lounge.	£149.00
 9	 LIV Student S11 8HY	Located in a popular student area. Includes a cinema, karaoke room, study rooms, cycle storage, free gym, on-site management, and a bookable private dining room to host your guests!	£158.00
 11	 The Pinnacles S2 5TL	Friendly purpose built student halls includes free gym, cinema room, common room, cycle storage, wheelchair access and on-site management. All rooms have a ¾ bed and an en-suite bathroom.	£99.00
 13	 The Trigon S1 4RA	Close to campus, this friendly student halls host a large welcoming reception often used by the friendly on-site management to host student events, a common room, cycle storage, wheelchair access and an enclosed outdoor courtyard area complete with seating.	£96.00

All prices are correct at the time of printing, but could be subject to change. Beton House's pricing is an estimate based on 2024/25. Please check our website for up to date information.

We offer a range of 14 properties in total - 9 are open for visitors today. Please speak to the Accommodation team for full details of all properties. Our staff will point you in the right direction on arrival at all our accommodation. Check out the map on page 44 to see all our open accommodation locations across the city.

Mins walk to City*	Mins walk to Collegiate*	Get there from City Campus	Get there from Collegiate Campus
7	40	Hop on the bus at Brown Street and get off at Béton House. Our staff will point you in the right direction on arrival.	Hop on the campus shuttle bus from outside Heart of the Campus and swap buses at City Campus. Staff and students will point you in the right direction.
15	30	Hop on the bus at Brown Street and get off at Kelham Island. Our staff will point you in the right direction on arrival.	Hop on the campus shuttle bus from outside Heart of the Campus and swap buses at City Campus. Staff and students will point you in the right direction.
15	20	Hop on the bus at Brown Street and get off at London Road. Our staff will point you in the right direction on arrival.	Take the Collegiate route bus from outside Heart of the Campus and get off at London Road. Our staff will point you in the right direction on arrival.
2	25	Walk from City Campus to Arundel Street. Staff and students will be available to point you in the right direction.	Hop on the campus shuttle bus from outside Heart of the Campus and when you arrive at City Campus walk to Arundel Street. Staff and students will point you in the right direction.
15	15	Hop on the bus at Brown Street and get off at London Road. Our staff will point you in the right direction on arrival.	Take the Collegiate route bus from outside Heart of the Campus and get off at London Road. Our staff will point you in the right direction on arrival.
3	20	Walk from City Campus to Eyre Street. Staff and students will be available to point you in the right direction.	Hop on the campus shuttle bus from outside Heart of the Campus and when you arrive at City Campus walk to Eyre Street. Staff and students will point you in the right direction.
15	10	Hop on the bus at Brown Street and get off at Cemetery Road. Our staff will point you in the right direction on arrival.	Take the Collegiate route bus from outside Heart of the Campus and get off at Cemetery Road. Our staff will point you in the right direction on arrival.
10	30	Hop on the bus at Brown Street and get off at The Pinnacles. Our staff will point you in the right direction on arrival.	Hop on the campus shuttle bus from outside Heart of the Campus and swap buses at City Campus. Staff and students will point you in the right direction.
5	25	Walk from City Campus to Shoreham Street. Staff and students will be available to point you in the right direction.	Hop on the campus shuttle bus from outside Heart of the Campus and when you arrive at City Campus walk to Shoreham Street. Staff and students will point you in the right direction.

Only the open properties are listed here with their corresponding numbers on the accommodation team's map



OUR CAMPUSES

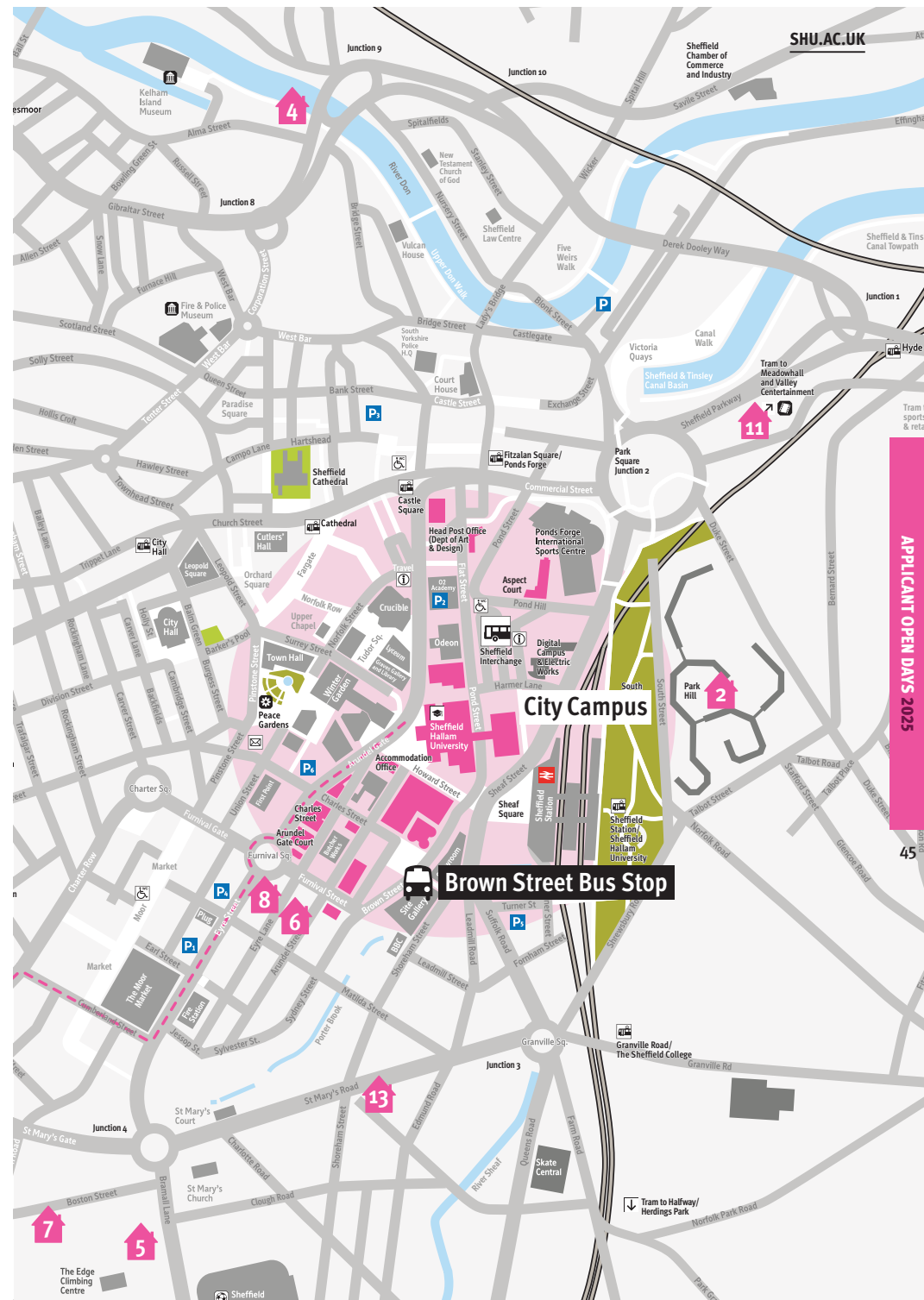
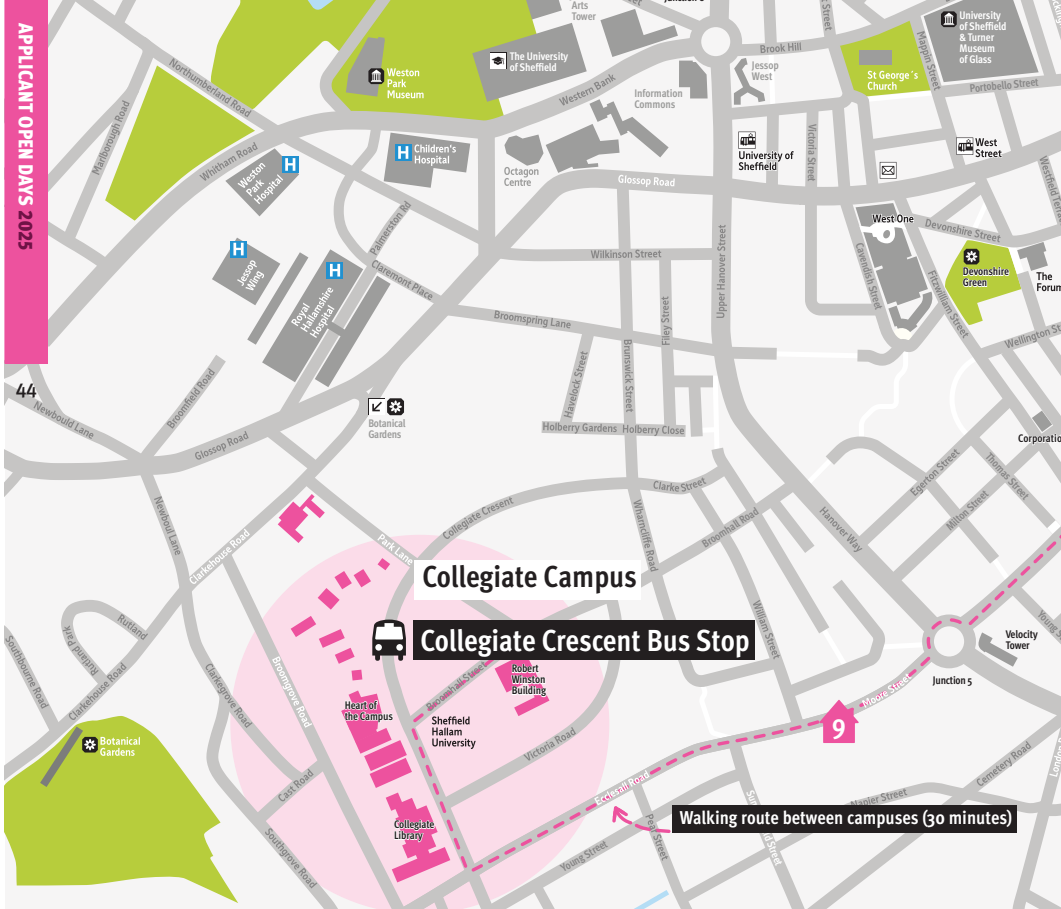


Accommodation and campus map	p44
City Campus map	p46
Collegiate Campus map	p48

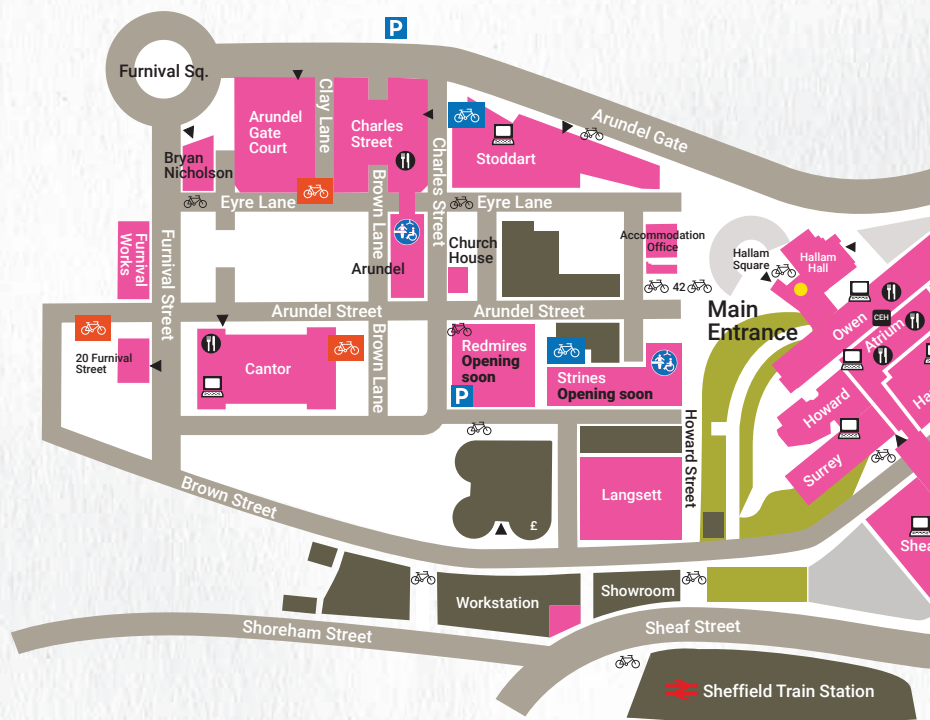
ACCOMMODATION & CAMPUS MAP

Check the corresponding numbers on page 40 for details about the accommodation on this map.

- | | |
|---|--|
| P₁ Apcoa Car Park: S1 4QW | P₅ Q-Park Sheffield Station: S2 4AA |
| P₂ Britannia Parking: S1 2PN | P₆ Q-Park Charles Street: S1 2NJ |
| P₃ Hartshead Square NCP: S1 2EL |  Accommodation open today see page 40 |
| P₄ Furnival Gate NCP: S1 4QJ |  University buildings |



CITY CAMPUS



▼ Entrance to building

University buildings

⚖️ Sport and fitness facilities

🚲 Bike racks

🚲 Bike racks with covered storage

🚲 Bike racks with covered storage (staff only)

🚲 Cycle hub



WATCH City Campus Video



📍 Hallam Help

♿️ Changing Places toilets

💻 PC locations

🍴 Eating on campus

CEH Careers and Employability Hub

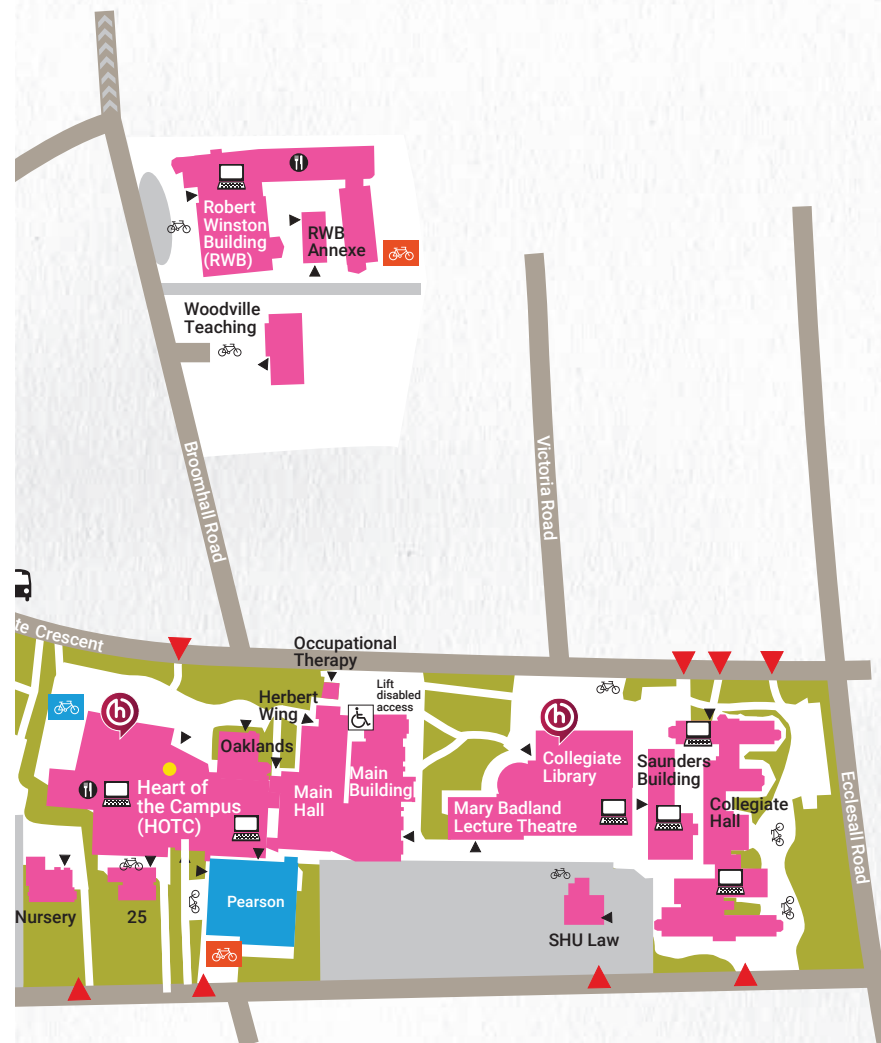
● Main reception

P Car park

COLLEGIATE CAMPUS

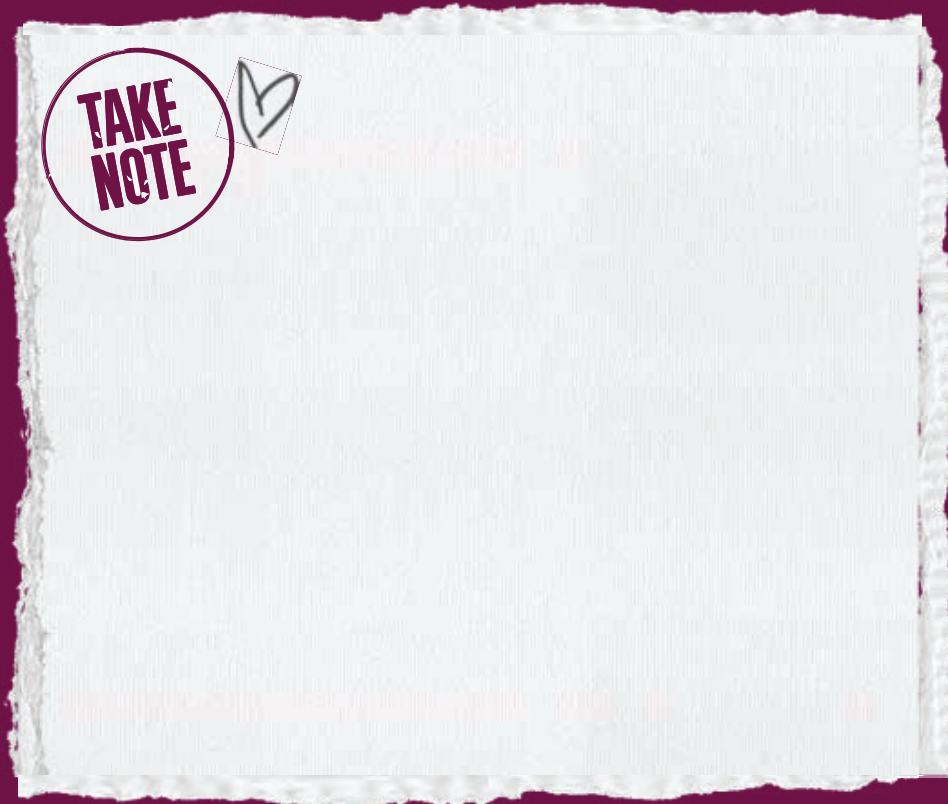


Watch Collegiate Campus Video



- | | | |
|--|--|-------------------------------|
| ▼ Entrance to building | Coach stop - shuttle | One way street |
| ▼ Entrance to campus | Disabled access to Chestnut and Willow Court | PC locations |
| Bike racks | Place to eat at the open day | Sports and Fitness facilities |
| Bike racks with covered storage | Hallam Help | University buildings |
| Bike racks with covered storage (staff only) | Main Reception | |





Sheffield Hallam University
shu.ac.uk



*Scan for Arrival
Guidance & Updates*

