

**Sheffield
Hallam
University**
Knowledge Applied

**YOUR GUIDE TO OUR
A P P L I C A N T**

**OPEN
DAY**



WELCOME TO HALLAM



Plan your day	4	Support talks and stands	28	Maps	40	City Campus map	44
How to get around	6						
Course talks and stands	8	Accommodation to visit today	34	Campuses and accommodation map	42	Collegiate Campus map	46

USEFUL INFO



Access for all
If you need support during your visit, please let us know. Our disabled student support team will be available to answer any questions in Heartspace Atrium, Level 2, Owen Building at City Campus and in Heart of the Campus at Collegiate Campus.



Photography and video
Photos and video may be taken at this event to support our marketing activity. They may appear on our website, social media accounts, email communications, printed marketing materials and third party websites. If you don't want to be photographed or filmed, please inform the photographer or a member of staff.



Health and safety
A continuous fire alarm is the signal to evacuate the building. Staff and student ambassadors will guide you to your nearest exit and assembly point. An intermittent fire alarm means there could be a fire in an adjacent building. You will be safe where you are and don't need to evacuate unless the alarm changes to a continuous one. If you need first aid, speak to a member of staff or student ambassador.



Where to eat and drink
You can pick up something to eat or drink in our university outlets. You can grab yourself a locally roasted coffee, sandwich, cake or snack.

Ask our staff and student ambassadors about places to eat and drink.



Wi-Fi
Network:
WIFI-GUEST
Check your wifi is on. Select "wifi-guest" from the available network list. Follow the on-screen instructions. The University does not exercise control over the nature, content or reliability of the information and/or data passing through our network.

How to get here

Find campus locations and information about getting here, including car parking near our campuses.



shu.ac.uk/visit-us/how-to-find-us



PLAN YOUR DAY

There's so much to do at an open day, it can be hard to know where to start. Try to include these elements and you'll really get a feel for Sheffield Hallam and if we're right for you. It all starts at 9.30am and finishes at 3.30pm.

Check in



When you get here, check in. We'll ask you for the QR code that we sent you when you booked, but don't worry if you don't have it. You can check in at various locations across campus, scan the QR code on the back of this guide for a list of our check-in points.

⌚ 10 MINS

Welcome talk



Start your day with a brief introduction to Sheffield Hallam from our staff and students. Head to your nearest lecture theatre at the following times:

- Pennine Lecture Theatre, Level 2, Atrium, City Campus – 10am
- HC.0.06, Heart of the Campus, Collegiate Campus – 10am

Rooms may be subject to change, please scan the QR code on the back of this guide for the most up-to-date information.

A recording of the Welcome talk is available to watch ahead of the day, if you prefer. Scan the QR code on the back of the guide to view.

⌚ 30 MINS

Discover your course



Chat to teachers and students who are actually studying your course, as well as meeting your future course mates and begin to build your study community. See the schedule starting on page 8.

Please note our academic staff will be available on stands until 1.30pm.

⌚ 1-2 HOURS

Support talks and stands



Got any questions about what support and help you'll have as a student here? Chat to our staff or attend a talk on your chosen topic. See page 28 for the schedule.

⌚ 1-2 HOURS

Explore accommodation



Take a look around our halls of residence and talk to students about what it's like to live there.

Choose which ones to view on page 38.

⌚ 1-2 HOURS

Take a campus tour



Imagine yourself as a Hallam student and take a tour of our campuses including our 24-hour libraries. There are maps of our campuses on pages 44-47.

City Campus tour - Meet at Level 5, Owen Building

Collegiate Campus tour - Meet at Heart of the Campus

⌚ 45 mins

Take a city tour



Choosing a university is about more than the course – the city must be right too. Sheffield's a brilliant place to live and study – make sure you save some time to explore. You can also take a walking tour of the city if you wish. Take a look at page 42 to see where our campus is in the city.

City centre tours set off at 11.30am, 1.30pm and 2.30pm from Level 5, Owen Building.

⌚ 45 mins





HOW TO GET AROUND

We're a large institution with two campuses and hundreds of learning spaces - you can find maps and directions on pages 42-47.

Just ask for help if you're unsure and we can help you navigate to where you need to be!

City or Collegiate Campus?

Different subjects are based across both our City and Collegiate campuses, so it is important you are at the correct one for your course. Check where your course subject talk is (from page 8 onwards) and make sure you are heading for the right campus.

Moving between campuses

It's just a 30 minute walk or take the free shuttle bus between our two campuses. The shuttle bus runs between 9am-3.30pm, allow 30 minutes travel time.

- If you're at City Campus, get the bus from Brown Street.
- If you're at Collegiate Campus, get the bus from Collegiate Crescent.

Find campus maps and more detailed directions on pages 42-47.

How long does it take to get between buildings?

From the main entrance at our Owen Building, City Campus it is:

- a 2 minute walk to the Atrium and the Howard, Norfolk and Surrey buildings
- a 5 minute walk to the Stoddart building and a further 1 minute to the Charles Street building
- a 5 minute walk to the Cantor building
- a 5 minute walk to Eric Mensforth and Hertha Ayrton buildings
- a 10 minute walk to Head Post Office building

From our main entrance at Heart of the Campus, Collegiate Campus it is:

- a 5 minute walk to Robert Winston Building
- a 5 minute walk to Mary Badland Lecture Theatre
- a 5 minute walk to the Main Building

Ask for help

We've posted friendly student ambassadors and staff all over our campus so you'll never be too far from someone who can direct you. Just ask if you need pointing in the right direction.

City Campus

Howard Street, Sheffield, S1 1WB
(if you're using satnav please use **S1 4RF**)
what3words: **///rubble.spin.fleet**

Collegiate Campus

Collegiate Crescent, Sheffield, **S10 2BP**
what3words: **///royal.send.seats**



OUR TALKS & STANDS

Course talks and stands	10
Support talks and stands	28

 City Campus  Collegiate Campus

COURSE TALKS AND STANDS

Introductory talks	Where	When	Course stand name and location		Courses covered	Further details
Health and Social Care Inspirational Guest Speaker	Room F518, Robert Winston Building, Collegiate Campus	10-10.30am	For more information about your specific course, please visit the course stand at either Heart of the Campus or Robert Winston Building.		Health and Social Care related courses.	Be inspired by a guest speaker and their experiences in a health or social care setting.
Health and Social Care Placement Learning	Herbert Wing 1, Main Hall, Collegiate Campus	1-1.30pm	For more information about your specific course, please visit the course stand at either Heart of the Campus or Robert Winston Building.		Health and Social Care related courses.	Find out about what to expect on placement from our Placement Learning Team.
The Sheffield Business School Experience	Room 7138, Stoddart Building, City Campus	11-11.15am	For more information about your specific course, please visit the course stand in our Stoddart Building.		An introduction to the courses within the Sheffield Business School.	Join us to find out what it's like to study at Sheffield Business School and discover our applied learning offer to all students.

Course talk subject area	Where	When	Course stand name and location		Courses covered	Further details
Accounting	Room 12.4.12, Charles Street, City Campus	11.45am-12.45pm	Accounting, Banking and Finance stand, Level 4 Charles Street Building		BA (Honours) Accounting and Finance*	This talk includes a demonstration of the Professional Bloomberg Terminal, a financial platform you will use on your course.
Acting and Performance	Arundel Gate Court, Arundel Gate Court Building, City Campus	11am-1pm	Film and Theatre stand, Atrium Level 2		BA (Honours) Performance and Professional Practice BA (Honours) Acting and Performance*	You can also join our inspiring teaching staff in a practical workshop session and sample some of the activities and performance styles that we explore in Performance. You will collaborate with other applicants to create a number of micro-performances and think about capturing the audience's imagination on stage.
Aerospace Engineering	Room 3018, Eric Mensforth Building, City Campus	11am-12.30pm	Aerospace Engineering stand, STEM Atrium		MEng Aerospace Engineering, BEng (Honours) Aerospace Engineering*	This talk includes an opportunity to visit the labs and workshops, where you will see various demonstrations of our state of the art teaching and learning facilities.
Animation	The Post Hall, Head Post Office, City Campus	11am-1pm	The Post Hall, Head Post Office Building		BA (Honours) Animation*	This talk is followed by an optional tour of our state of the art teaching and learning facilities.
Architecture	Room 6619, Adsetts Building, City Campus	12.10-1.10pm	Architecture stand, Atrium Level 2		BSc (Honours) Architecture	
Automotive Engineering	Room 3107, Eric Mensforth Building, City Campus	11am-12.30pm	Automotive Engineering stand, STEM Atrium		BEng (Honours) Automotive Engineering* MEng Automotive Engineering	This talk includes an opportunity to visit the labs and workshops, where you will see various demonstrations of our state of the art teaching and learning facilities.

*This course is also available to study with a foundation year. For more information about studying the courses with foundation years please speak to our academic teams at the course

COURSE TALKS AND STANDS

Course talk subject area	Where	When	Course stand name and location		Courses covered	Further details
Biosciences and Chemistry	Room 1028, Owen Building, City Campus	11am-1.30pm	Biosciences and Chemistry Stand, Hallam View, Owen Building, Level 6		BSc (Honours)/MSci Biomedical Science* BSc (Honours)/MSci Biology* BSc (Honours)/MSci Biochemistry* BSc (Honours)/MSci Biomedicine and Health Science* BSc (Honours)/MChem Chemistry*	This session includes an introductory talk and an opportunity to experience real teaching and learning in our state of the art laboratories. We'll also hold a scenario based lab session, with interactive practical challenge, as well as a networking opportunity to speak to current students and academics to find out more about your chosen course.
Building Surveying	Room 503, Norfolk Building, City Campus	11am-12.30pm	Construction, Real Estate, Building and Quantity Surveying stand, Atrium Level 2		BSc (Honours) Building Surveying	This talk includes an optional 30 minute tour of our facilities.
Business and Information Technology	Room 9103, Cantor Building, City Campus	11am-12.30pm	Computing stand, Cantor Building Atrium		BSc (Honours) Information Technology with Business Studies*	This session also includes a live teaching experience taster through an academic-led activity relevant to your course that will demonstrate our facilities, environment, and approaches to learning and teaching.
Business, Management and Enterprise	Room 7140, Stoddart Building, City Campus	11.30am-12.30pm	Business, Management and Enterprise stand, Stoddart Building Deli		BA (Honours) Business Management and Enterprise* BA (Honours) Business Studies* BA (Honours) Business Management* BA (Honours) Business Management with Psychology* BA (Honours) Business Management with Law* BA (Honours) Business Management (top up)	This session includes an opportunity to experience a sample lecture in a University classroom environment.
Chemical Engineering	Room 3113, Eric Mensforth Building, City Campus	11am-12.30pm	Chemical Engineering stand, STEM Atrium		BEng (Honours) Chemical Engineering* MEng Chemical Engineering	This talk includes an opportunity to visit the labs and workshops, where you will see various demonstrations of our state of the art teaching and learning facilities.
Children and Childhoods	The Dorothy Fleming Lecture Theatre, Charles Street Building, City Campus	11am-12.30pm	Children and Childhoods stand, Ground Floor, Charles Street Building		BA (Honours) Children and Childhoods	
Climate, Sustainability and Environmental Management	Room 209, Norfolk Building, City Campus	11am-12.45pm	Geography, Climate, Sustainability and Environmental management stand, Atrium Level 2		BSc (Honours) Climate, Sustainability and Environmental Management	Includes an opportunity to take a tour of the facilities you may use on your course.
Computer Science for Games	Room 9005, Cantor Building, City Campus	11am-12.30pm	Computing stand, Cantor Building Atrium		BSc (Honours) Computer Science for Games* MComp Computer Science for Games BSc (Honours) Computer Games Technologies*	This session also includes a live teaching experience taster through an academic-led activity relevant to your course that will demonstrate our facilities, environment, and approaches to learning and teaching.
Computing	Room 9003, Cantor Building, City Campus	11am-12.30pm	Computing stand, Cantor Building Atrium		BSc (Honours) Computing*	This session also includes a live teaching experience taster through an academic-led activity relevant to your course that will demonstrate our facilities, environment, and approaches to learning and teaching.
Construction Project Management	Room 502, Norfolk Building, City Campus	11am-12.30pm	Construction, Real Estate, Building and Quantity Surveying stand, Atrium Level 2		BSc (Honours) Construction Project Management	Includes an optional 30 minute tour of our facilities.

*This course is also available to study with a foundation year. For more information about studying the courses with foundation years please speak to our academic teams at the course stands.

COURSE TALKS AND STANDS

City Campus Collegiate Campus

Course talk subject area	Where	When	Course stand name and location		Courses covered	Further details
Criminology and Criminology and Sociology	Room D104, Main Building, Collegiate Campus	11am-12pm	Criminology stand, Heart of the Campus		BA (Honours) Criminology* BA (Honours) Criminology and Sociology*	
Criminology and Psychology	Room D008, Main Building, Collegiate Campus	11am-12pm	Criminology stand, Heart of the Campus		BSc (Honours) Criminology and Psychology*	
Cyber Security	Room 9006, Cantor Building, City Campus	11am-12.30pm	Computing stand, Cantor Building Atrium		BSc (Honours) Cyber Security* BSc (Honours) Cyber Security with Forensics*	This session also includes a live teaching experience taster through an academic-led activity relevant to your course that will demonstrate our facilities, environment, and approaches to learning and teaching.
Diagnostic Radiography	Room E.0.01, Robert Winston Building Annex, Collegiate Campus	11am-12.45pm	Diagnostic Radiography stand, Room F343, Robert Winston Building		BSc (Honours) Diagnostic Radiography	This session includes an introductory talk and an interactive demonstration relating to teaching and research techniques in Diagnostic Radiography. You may also like to experience our new Collegiate Wing simulated ward environment, to visit this, please book onto a tour from the desk located in Heart of the Campus, Room HC.0.35. Tours take place between 10am-3pm and last 30 minutes.
Digital Media Production	Room 5520, Surrey Building, City Campus	11am-12.30pm	Digital Media and Games stand, Atrium Level 2		BA (Honours) Digital Media Production*	Includes an optional 30 minute tour of our facilities.
Economics	Room 12.4.19, Charles Street Building, City Campus	11.45am-12.45pm	Economics stand, Floor 4, Charles Street Building		BA (Honours) Economics* BA (Honours) Business Economics*	This talk includes a demonstration of the Professional Bloomberg Terminal, a financial platform you will use on your course.
Education, Psychology and Counselling	The Dorothy Fleming Lecture Theatre, Charles Street Building, City Campus	11am-12.30pm	Education, Psychology and Counselling stand, Ground Floor, Charles Street Building		BA (Honours) Education Psychology and Counselling	
Electrical and Electronic Engineering	Room 3104, Eric Mensforth Building, City Campus	11am-12.30pm	Electrical and Electronic Engineering stand, STEM Atrium		BEng (Honours) Electrical and Electronic Engineering* MEng Electrical and Electronic Engineering	This session includes an opportunity to visit the labs and workshops, where you will see various demonstrations of our state of the art teaching and learning facilities.
English and Creative Writing	Room 6620, Adsetts Building, City Campus	11am-12pm	English and Creative Writing stand, Atrium Level 2		BA (Honours) Creative Writing BA (Honours) English*	
Esports Management	Room 7301, Stoddart Building, City Campus	11.30am-1pm	Esports Management stand, Heartspace		BA (Honours) Esports Management	This session includes an opportunity to visit the dedicated lab, where you will see various demonstrations of our state of the art teaching and learning facilities.
Events Management	Hallam Hall, Level 6, Owen Building City Campus	11.30am-1pm	Events Management stand, Hallam Hall, Level 6 Owen Building		BSc (Honours) Events Management* BSc (Honours) Events Management (top up) BSc (Honours) Events and Leisure Management (top up)	This session includes the opportunity to talk to events course tutors and explore our variety of amazing work experience opportunities including our partnership with Festival Republic.
Fashion Design	The Post Hall, Head Post Office Building City Campus	11am-12.30pm	The Post Hall, Head Post Office Building		BA (Honours) Fashion Design*	This talk is followed by an optional tour of our state of the art teaching and learning facilities.

*This course is also available to study with a foundation year. For more information about studying the courses with foundation years please speak to our academic teams at the course stands.

COURSE TALKS AND STANDS

City Campus Collegiate Campus

Course talk subject area	Where	When	Course stand name and location		Courses covered	Further details
Fashion Management and Communication	The Post Hall, Head Post Office, City Campus	11am-12.30pm	The Post Hall, Head Post Office Building		BA (Honours) Fashion Management and Communication*	This talk is followed by an optional tour of our state of the art teaching and learning facilities.
Film and TV Production	Room 1031, Owen Building, City Campus	11am-12.30pm	Film and Theatre stand, Atrium Level 2		BA (Honours) Film and TV Production*	This talk is followed by an optional tour of our facilities.
Film Studies	Room 123 The Void, Owen Building, City Campus	11am-12pm	Film and Theatre stand, Atrium Level 2		BA (Honours) Film Studies	
Financial Services	Room 12.4.17, Charles Street Building, City Campus	11.45am-12.45pm	Financial Services stand, Floor 4, Charles Street Building		BSc (Honours) Financial Trading and Investment Management* BSc (Honours) Economics and Finance* BSc (Honours) Banking and Finance*	Includes a demonstration of the Professional Bloomberg Terminal, a financial platform you will use on your course.
Fine Art	The Post Hall, Head Post Office, City Campus	11am-12.30pm	The Post Hall, Head Post Office Building		BA (Honours) Fine Art*	This talk is followed by an optional tour of our state of the art teaching and learning facilities.
Food and Nutrition	Room 1239, Owen Building, City Campus	11.30am-1pm	Food and Nutrition stand, 12th Floor, Owen Building		BSc (Honours) Food and Nutrition* BSc (Honours) Food and Nutrition (top up) BSc (Honours) Nutrition, Diet and Wellbeing (top up), BSc (Honours) Human Nutrition and Health*	There will also be an opportunity to take a tour of the facilities you may use on your course including labs, sensory booths and kitchen spaces.
Game Art and Games Design and Development	Room 9231, Cantor Building, City Campus	11am-12.30pm	Digital Media and Games stand, Atrium Level 2		BA (Honours) Game Art* BA (Honours) Games Design and Development*	This session includes an optional 30 minute tour of our facilities.
Geography	Peak Lecture Theatre, Owen Building, City Campus	11am-12.45pm	Geography, Climate, Sustainability and Environmental Management stand, Atrium Level 2		BA/BSc (Honours) Geography	There is also an opportunity to take a tour of the facilities you may use on your course.
Graphic Design	The Post Hall, Head Post Office, City Campus	11am-12.30pm	The Post Hall, Head Post Office Building		BA (Honours) Graphic Design*	This talk is followed by an optional tour of our state of the art teaching and learning facilities.
History	Room 1029, Owen Building, City Campus	11am-12pm	History stand, Atrium Level 2		BA (Honours) History	
Illustration	The Post Hall, Head Post Office, City Campus	11am-12.30pm	The Post Hall, Head Post Office Building		BA (Honours) Illustration*	This talk is followed by an optional tour of our state of the art teaching and learning facilities.
Interior Architecture and Design	The Post Hall, Head Post Office Building City Campus	11am-12.30pm	The Post Hall, Head Post Office Building		BA (Honours) Interior Architecture and Design*	This talk is followed by an optional tour of our state of the art teaching and learning facilities.

*This course is also available to study with a foundation year. For more information about studying the courses with foundation years please speak to our academic teams at the course stands.

COURSE TALKS AND STANDS

City Campus Collegiate Campus

Course talk subject area	Where	When	Course stand name and location		Courses covered	Further details
International Business and Languages	Room 7516, Stoddart Building, City Campus	11.30am	International Business stand, Stoddart Building Deli		BA (Honours) International Business* BA (Honours) International Business with Languages (French)* BA (Honours) International Business with Languages (Spanish)* BA (Honours) International Business (European Partnership Programme)	This talk also includes a taster session.
Journalism and Public Relations (Journalism Public Relations with Media)	Room 9235, Cantor Building, City Campus	11am-12.30pm	Journalism, PR & Media stand, Atrium Level 2		BA (Honours) Journalism Public Relations with Media*	Includes an optional 30 minute tour of our facilities.
Journalism and Public Relations (Sports Journalism)	Room 9130, Cantor Building, City Campus	11am-12.30pm	Journalism, PR & Media stand, Atrium Level 2		BA (Honours) Sports Journalism*	Includes an optional 30 minute tour of our facilities.
Languages	Please see International Business and Languages				Please see International Business and Languages	
Law	Room HC.0.06, Heart of the Campus, Collegiate Campus	11am-12pm	Law stand, Heart of the Campus		LLB (Honours) Law* LLB (Honours) Law with Criminology*	You can also join us for a tour of the Law Clinic, come along to the Moot Court in the Heart of the Campus to arrange your tour.
Marketing	Room 7140, Stoddart Building, City Campus	12.30-1.30pm	Marketing stand, Stoddart Building Deli		BA (Honours) Marketing Communications and Advertising* BA (Honours) Business Management and Marketing BA (Honours) Marketing* BA (Honours) Digital Marketing BA (Honours) Marketing with Psychology	This talk also includes an interactive taster session.
Mathematics	Room 609, Norfolk Building, City Campus	11am-12.30pm	Mathematics stand, STEM Atrium		BSc (Honours) Mathematics*	This talk is followed by an optional tour of our state of the art teaching and learning facilities.
Mechanical Engineering	Room 3021, Eric Mensforth Building, City Campus	11am-12.30pm	Mechanical Engineering stand, STEM Atrium		BEng (Honours) Mechanical Engineering* MEng Mechanical Engineering	This session includes an opportunity to visit the labs and workshops, where you will see various demonstrations of our state of the art teaching and learning facilities.
Mechatronic and Robotic Engineering	Room 3105, Eric Mensforth Building, City Campus	11am-12.30pm	Mechatronic and Robotic Engineering stand, STEM Atrium		BEng (Honours) Mechatronic and Robotic Engineering*	This session includes an opportunity to visit the labs and workshops, where you will see various demonstrations of our state of the art teaching and learning facilities.
Midwifery	Herbert Wing 2, Main Hall, Collegiate Campus	11am-12.45pm	Midwifery stand, Room F437, Robert Winston Building		BSc (Honours) Midwifery	This session includes an introductory talk and an interactive demonstration relating to teaching and research techniques in Midwifery. You may also like to experience our new Collegiate Wing simulated ward environment, to visit this, please book onto a tour from the desk located in Heart of the Campus, Room HC.0.35. Tours take place between 10am-3pm and last 30 minutes.

*This course is also available to study with a foundation year. For more information about studying the courses with foundation years please speak to our academic teams at the course stands.

COURSE TALKS AND STANDS

City Campus Collegiate Campus

Course talk subject area	Where	When	Course stand name and location		Courses covered	Further details
Nursing (Adult)	Herbert Wing 1, Main Hall, Collegiate Campus	11.45am-12.30pm	Adult Nursing stand, Room HC.1.52, Heart of the Campus		BSc (Honours) Nursing (Adult)	This session includes an introductory talk to the nursing courses. For a tour of our Adult Nursing teaching environments, book onto a tour from the desk located in Heart of the Campus, Room HC.0.35. Tours take place between 10am-3pm and last 30 minutes.
Nursing (Child)	Herbert Wing 1, Main Hall, Collegiate Campus	11.45am-12.30pm	Children's Nursing stand, Rooms HC.1.53 & HC.1.54, Heart of the Campus		BSc (Honours) Nursing (Child)	This session includes an introductory talk to the nursing courses. For a tour of our Child Nursing teaching environments, book onto a tour from the desk located in Heart of the Campus, Room HC.0.35. Tours take place between 10am-3pm and last 30 minutes.
Nursing (Learning Disability) and Social Work	Room HC.0.07, Heart of the Campus, Collegiate Campus	11am-12.30pm	Learning Disability Nursing and Social Work stand, Heart of the Campus		BSc (Honours) Nursing (Learning Disability) and Social Work	This session includes an introductory talk and an interactive demonstration relating to teaching and research techniques in Nursing (Learning Disability)and Social Work. You may also like to experience our new Collegiate Wing simulated ward environment, to visit this, please book onto a tour from the desk located in Heart of the Campus, Room HC.0.35. Tours take place between 10am-3pm and last 30 minutes.
Nursing (Mental Health)	Herbert Wing 1, Main Hall, Collegiate Campus	11.45am-1.15pm	Mental Health Nursing stand, Room HC.1.52, Heart of the Campus		BSc (Honours) Nursing (Mental Health)	This session includes an introductory talk to the nursing courses and an interactive demonstration relating to teaching and research techniques in Mental Health Nursing. You may also like to experience our new Collegiate Wing simulated ward environment, to visit this, please book onto a tour from the desk located in Heart of the Campus, Room HC.0.35. Tours take place between 10am-3pm and last 30 minutes.
Occupational Therapy	Room E.0.03, Robert Winston Building Annex, Collegiate Campus	11am-12.45pm	Occupational Therapy stand, Room F335, Robert Winston Building		BSc (Honours) Occupational Therapy	This session includes an introductory talk and an interactive demonstration relating to teaching and research techniques in Occupational Therapy. You may also like to experience our new Collegiate Wing simulated ward environment, to visit this, please book onto a tour from the desk located in Heart of the Campus, Room HC.0.35. Tours take place between 10am-3pm and last 30 minutes.
Operating Department Practice	Room F339, Robert Winston Building, Collegiate Campus	11am-12.45pm	Operating Department Practice stand, Room F336, Robert Winston Building		BSc (Honours) Operating Department Practice	This session includes an introductory talk and an interactive demonstration relating to teaching and research techniques in Operating Department Practice. You may also like to experience our new Collegiate Wing simulated ward environment, to visit this, please book onto a tour from the desk located in Heart of the Campus, Room HC.0.35. Tours take place between 10am-3pm and last 30 minutes.

*This course is also available to study with a foundation year. For more information about studying the courses with foundation years please speak to our academic teams at the course stands.

COURSE TALKS AND STANDS

City Campus Collegiate Campus

Course talk subject area	Where	When	Course stand name and location		Courses covered	Further details
Paramedic Science	Room F518, Robert Winston Building, Collegiate Campus	11am-12.45pm	Paramedic Science stand, Rooms F310 & F313, Robert Winston Building		BSc (Honours) Paramedic Science	This session includes an introductory talk and an interactive demonstration relating to teaching and research techniques in Paramedic Science. You may also like to experience our new Collegiate Wing simulated ward environment, to visit this, please book onto a tour from the desk located in Heart of the Campus, Room HC.0.35. Tours take place between 10am-3pm and last 30 minutes.
Photography	The Post Hall, Head Post Office, City Campus	11am-12.30pm	The Post Hall, Head Post Office Building		BA (Honours) Photography*	This talk is followed by an optional tour of our state of the art teaching and learning facilities.
Physical Activity, Sport and Health	Herbert Wing 1, Main Hall, Collegiate Campus	11am-1.15pm	Sport and Physical Activity stand, Heart of the Campus		BSc (Honours) Physical Activity Sport and Health*	This session includes an introductory talk and an interactive demonstrations and a lab tour.
Physical Education and School Sport	Herbert Wing 1, Main Hall, Collegiate Campus	11am-1.15pm	Sport and Physical Activity stand, Heart of the Campus		BSc (Honours) Physical Education and School Sport*	This session includes an introductory talk and a masterclass seminar investigating contemporary issues in Physical Education and School Sport.
Physics	Room 4226, Sheaf Building, City Campus	11am-12.30pm	Physics stand, STEM Atrium		BSc (Honours) Physics*	This session includes an opportunity to visit the labs and workshops, where you will see various demonstrations of our state of the art teaching and learning facilities.
Physiotherapy	Room F518, Robert Winston Building, Collegiate Campus	11.45am-1.30pm	Physiotherapy stand, Rooms F407 & F401, Robert Winston Building		BSc (Honours) Physiotherapy	This session includes and introductory talk and an interactive demonstration relating to teaching and research techniques in Physiotherapy. You may also like to experience our new Collegiate Wing simulated ward environment, to visit this, please book onto a tour from the desk located in Heart of the Campus, Room HC.0.35. Tours take place between 10am-3pm and last 30 minutes.
Politics and International Relations	Room D001, Main Building, Collegiate Campus	11am-12pm	Politics and International Relations stand, Heart of the Campus		BA (Honours) Politics and International Relations*	
Product Design	The Post Hall, Head Post Office, City Campus	11am-12.30pm	The Post Hall, Head Post Office Building		BA (Honours) Product Design	This talk is followed by an optional tour of our state of the art teaching and learning facilities.
Professional Policing	Room D005, Main Building, Collegiate Campus	11am-12pm	Professional Policing stand, Heart of the Campus		BA (Honours) Professional Policing*	
Psychology	Mary Badland Lecture Theatre, Collegiate Campus	11am-12.45pm	Psychology stand, Heart of the Campus		BSc (Honours) Psychology*	Includes an option to take a guided tour of the Psychology research laboratories. The tour is led by current students, who will explain the usage of each laboratory and answer any questions you have.

*This course is also available to study with a foundation year. For more information about studying the courses with foundation years please speak to our academic teams at the course stands.

COURSE TALKS AND STANDS

City Campus Collegiate Campus

Course talk subject area	Where	When	Course stand name and location		Courses covered	Further details
Quantity Surveying	Room 505, Norfolk Building, City Campus	11am-12.30pm	Construction, Real Estate, Building and Quantity Surveying stand, Atrium Level 2		BSc (Honours) Quantity Surveying	This session includes an optional 30 minute tour of our facilities.
Radiotherapy and Oncology	Room E.0.02, Robert Winston Building Annex, Collegiate Campus	11am-12.45pm	Radiotherapy and Oncology stand, Room F340, Robert Winston Building		BSc (Honours) Radiotherapy and Oncology	This session includes an introductory talk and an interactive demonstration relating to teaching and research techniques in Radiotherapy and Oncology. You may also like to experience our new Collegiate Wing simulated ward environment, to visit this, please book onto a tour from the desk located in Heart of the Campus, Room HC.0.35. Tours take place between 10am-3pm and last 30 minutes.
Real Estate	Room 210, Norfolk Building, City Campus	11am-12.30pm	Construction, Real Estate, Building and Quantity Surveying stand, Atrium Level 2		BSc (Honours) Real Estate	This session includes an optional 30 minute tour of our facilities.
Social Work	Room HC.0.29, Heart of the Campus, Collegiate Campus	11am-12.30pm	Social Work stand, Heart of the Campus		BA (Honours) Social Work	This session includes an introductory talk and a masterclass seminar investigating contemporary issues in Social Work.
Sociology	Room D105 Main Building, Collegiate Campus	11am-12pm	Sociology stand, Heart of the Campus		BA (Honours) Sociology*	
Software Engineering and Computer Science	Room 9135, Cantor Building, City Campus	11am-12.30pm	Computing stand, Cantor Building Atrium		BEng (Honours) Software Engineering* BSc (Honours) Artificial Intelligence and Robotics* BSc (Honours) Computer Science* BSc (Honours) Computer Science with Artificial Intelligence*	This session also includes a live teaching experience taster through an academic-led activity relevant to your course that will demonstrate our facilities, environment, and approaches to learning and teaching.
Sport and Exercise Science	Herbert Wing 1, Main Hall, Collegiate Campus	11am-1.15pm	Sport and Physical Activity stand, Heart of the Campus		BSc (Honours) Sport and Exercise Science*	This session includes an introductory talk and an interactive demonstrations relating to teaching and research including a lab tour.
Sport Business Management	Herbert Wing 1, Main Hall, Collegiate Campus	11am-1.15pm	Sport and Physical Activity stand, Heart of the Campus		BSc (Honours) Sport Business Management*	This session includes an introductory talk and a masterclass seminar investigating contemporary issues in Sport Business Management.
Sport Coaching	Herbert Wing 1, Main Hall, Collegiate Campus	11am-1.15pm	Sport and Physical Activity stand, Heart of the Campus		BSc (Honours) Sport Coaching*	This session includes an introductory talk and a masterclass seminar investigating contemporary issues in Sport Coaching.
Sport Development with Coaching	Herbert Wing 1, Main Hall, Collegiate Campus	11am-1.15pm	Sport and Physical Activity stand, Heart of the Campus		BSc (Honours) Sport Development with Coaching*	This session includes an introductory talk and a masterclass seminar investigating contemporary issues in Sport Development with Coaching.

*This course is also available to study with a foundation year. For more information about studying the courses with foundation years please speak to our academic teams at the course stands.

COURSE TALKS AND STANDS

City Campus Collegiate Campus

Course talk subject area	Where	When	Course stand name and location		Courses covered	Further details
Teacher Education - Primary and Early Years	The Dorothy Fleming Lecture Theatre, Charles Street Building, City Campus	11.30am-12.15pm	Primary 3-7 and Primary 7-11 stand, ground floor, Charles Street Building		BA (Honours) Early Years and Primary Education (3-7) with QTS BA (Honours) Primary Education (5-11) with QTS (QTS - Qualified Teacher Status)	This session also includes an activity covering Training to Teach in Early Years and Primary Schools - the why, where and how?
Tourism, Aviation and Hospitality Management	Room 1239, Owen Building, City Campus	12.30-2pm	Tourism, Aviation and Hospitality Management stand, 12th Floor, Owen Building		BSc (Honours) International Hospitality and Tourism Management (La Trobe) BSc (Honours) International Tourism and Hospitality Business Management* BSc (Honours) International Tourism and Hospitality Business Management (top up) BSc (Honours) International Hospitality Business Management (top up) BSc (Honours) International Tourism Management* BSc (Honours) International Tourism Management (top up)	This session includes a welcome talk followed by a tour of the facilities and teaching spaces you will use as part of your studies.
Working with Children, Young People and Families	Room HC.0.17, Heart of the Campus, Collegiate Campus	11am-12.30pm	Working with Children, Young People and Families stand, Heart of the Campus		Working with Children, Young People and Families	This session includes an introductory talk and an interactive workshop to explore the challenges of working with children, young people and families.

*This course is also available to study with a foundation year. For more information about studying the courses with foundation years please speak to our academic teams at the course stands.



SUPPORT TALKS AND STANDS

What do you want to find out about?	Talks: where and when?	Stands: Chat to us all day from 9.30am-3.30pm
Welcome talk An introduction to Sheffield Hallam from a member of the University's senior executive group.	City Campus Pennine Lecture Theatre Level 2, Atrium 10-10.30am Collegiate Campus HC.0.06, Heart of the Campus 10-10.30am	Come and speak to our friendly students and staff at any point today if you have any questions - we're happy to help.
Accommodation Come and find out about our accommodation options and get advice on applying.	City Campus Pennine Lecture Theatre Level 2, Atrium 1.45-2.15pm Collegiate Campus HC.0.06, Heart of the Campus 1.45-2.15pm	City Campus Accommodation Services, Howard Street (opposite main entrance) Collegiate Campus Heart of the Campus
Admissions: Applying to Sheffield Hallam University We can help with your: <ul style="list-style-type: none">• application process• application dates• personal statement Please note: there is no talk for this support area	City Campus Heartspace Atrium, Level 2, Owen Building Collegiate Campus Heart of the Campus and Robert Winston Building	
Library & Skills Centre Chat to us about the Library's 24/7/365 spaces and resources, the sessions we offer to support your academic skills development, and how we support every student at Sheffield Hallam University to become an independent learner and to be successful in their studies. Please note: there is no talk for this support area	City Campus Heartspace Atrium, Level 2, Owen Building Collegiate Campus Heart of the Campus	
Minoritised student groups - support on offer Come and speak to current students about their experiences of studying at Sheffield Hallam as a student from a minority ethnic background. Please note: there is no talk for this support area	City Campus Heartspace Atrium, Level 2, Owen Building Collegiate Campus Heart of the Campus	
Parent Ambassadors Speak to one of our parent ambassadors to find out more about their experiences of supporting a child at university. Please note: there is no talk for this support area	City Campus Heartspace Atrium, Level 2, Owen Building Collegiate Campus Heart of the Campus	

Turn the page for more support sessions.



SUPPORT TALKS AND STANDS

What do you want to find out about?	Talks: where and when?	Stands: Chat to us all day from 9.30am-3.30pm
<p>SHU Progress: applicant support scheme SHU Progress provides support for applicants whose personal circumstances might mean there are barriers to going to university; such as students who are care leavers, carers or estranged from their families (amongst other personal circumstances). We can help you prepare for uni. Come for a chat to see how we can help.</p> <p>Please note: SHU Progress is covered in the Supporting you at Hallam talk (see page 32)</p>		<p>City Campus Heartspace Atrium, Level 2, Owen Building</p> <p>Collegiate Campus Heart of the Campus</p>
<p>Sport Hallam Performance Athlete We are committed to supporting sporting excellence amongst our students. Find out if you're eligible for our support to help you balance your academic endeavours with achieving your sporting potential - whatever course you're studying.</p>	<p>Collegiate Campus Room HC.0.32, Heart of the Campus 1.45-2.15pm</p>	<p>Collegiate Campus Sport Hallam stand Heart of the Campus</p>
<p>Sport Hallam: Sport and fitness opportunities Sport Hallam provides a wide range of programmes, initiatives and services to support you to get active, meet people, keep fit, look after your mental and physical health, try something new or continue with your hobby or passion. We pride ourselves on our inclusive approach, supporting beginners and people new to sport right through to elite and dual career athletes. Come and talk to our team today.</p> <p>Please note: there is no talk for this support area</p>		<p>City Campus Heartspace Atrium, Level 2, Owen Building</p> <p>Collegiate Campus Heart of the Campus</p>
<p>Student Support and Funding Talk to us about student funding and loans, the Disabled Student Allowance application process, and the wide range of support services we offer.</p> <p>Please note: Student Support and Funding is covered in the Supporting you at Hallam talk (see page 32)</p>		<p>City Campus Heartspace Atrium, Level 2, Owen Building</p> <p>Collegiate Campus Heart of the Campus</p>
<p>The Students' Union The Students' Union is run by students, for students. Find where you belong at Hallam, including:</p> <ul style="list-style-type: none">• Over 120 student societies to join – from course related to unusual and wonderful hobbies• Volunteering opportunities to support the local community• Skills training and development• Student representatives who have your back• A free, independent advice service <p>For further information visit hallamstudentsunion.org</p> <p>Please note: there is no talk for this support area.</p>		<p>City Campus Heartspace Atrium, Level 2, Owen Building</p> <p>Collegiate Campus Heart of the Campus</p>



Turn the page for more support sessions.

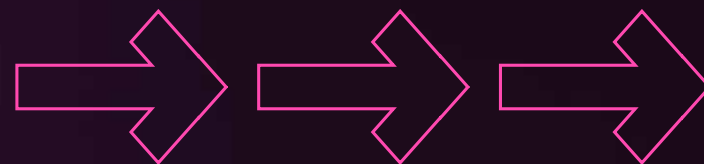
SUPPORT TALKS AND STANDS

What do you want to find out about?	Talks: where and when?	Stands: Chat to us all day from 9.30am-3.30pm
Supporting you at Hallam Sheffield Hallam offers a wide range of support and guidance related to your course and personal wellbeing. This talk will give an overview of the services available to you, both before you arrive (through our Access Scheme) and during your time here.	City Campus Peak Lecture Theatre, Level 5, Owen Building 1-1.30pm Collegiate Campus HC.0.06, Heart of the Campus 1-1.30pm	City Campus Heartspace Atrium, Level 2, Owen Building Collegiate Campus Heart of the Campus
Your future career From the moment you arrive at Sheffield Hallam, we're here to help you with your future career plans. Talk to us about how we can make you ready for work with work experience, work opportunities and working for yourself. You can also join us for our talk: Your placement year – put your learning into practice - information below		City Campus Heartspace Atrium, Level 2, Owen Building Collegiate Campus Heart of the Campus
Your placement year – put your learning into practice Hear careers experts in our placement team and students who have recently completed a placement talk about the benefits of a placement year to your future career. You'll find out what a placement is, the range of options available to you, why it's an important part of your course and how it can positively impact your degree result and your future graduate career. Please note, this talk does not cover placements for Education and Health courses as that will be covered in the subject specific talks for those areas.	City Campus Peak Lecture Theatre, Level 5, Owen Building 1.30-2pm Collegiate Campus Herbert Wing 1, Main Hall 3-3.30pm	Please visit our Careers stand to find out more about placement years (see above). You can also visit your course stand for more information about placement opportunities for your course.

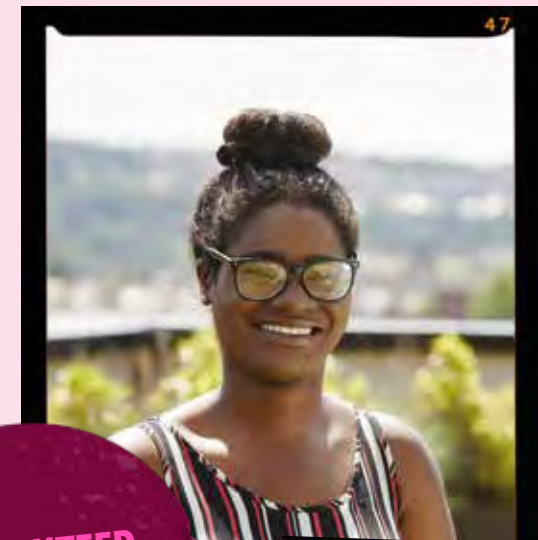
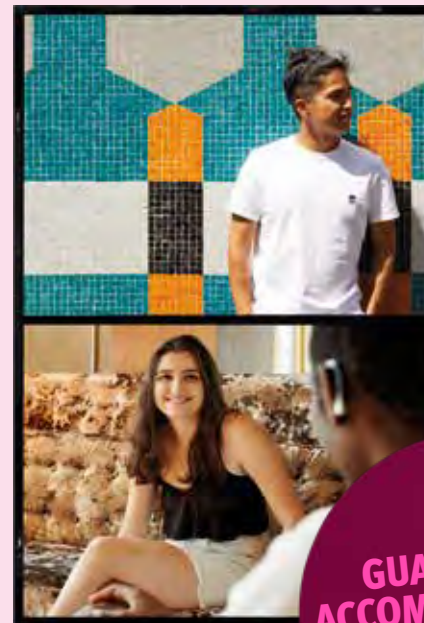




OUR ACCOMMODATION



ACCOMMODATION TO VISIT TODAY



**GUARANTEED
ACCOMMODATION
CLOSE TO
CAMPUS**

**NO HIDDEN
COSTS
ALL BILLS
INCLUDED**

If you're thinking about leaving home for university, we make it easy. We have affordable halls of residence to suit all tastes, from large and sociable to small and friendly — and they come with all the support you need to make it a home from home.

What's more, when you apply for our halls we'll make sure you're living with other Sheffield Hallam students, so you'll be making friends from day one.

See 360 degree videos of all our halls and apply at shu.ac.uk/accommodation



Take A Tour



ACCOMMODATION TO VISIT TODAY



Scan HERE for loads more info on our accommodation including 360 degree videos.

Our staff will point you in the right direction on arrival at all our accommodation. Check out the map on page 42 to see all our accommodation locations across the city.

Map number	Name and Postcode	Description	Prices from per week		Mins walk to City	Mins walk to Collegiate	Get there from City Campus	Get there from Collegiate Campus
1	 Béton House S2 5DT	Unique 8-bed townhouses located in Sheffield's famous Park Hill development. • Bike storage • Common room • En-suite • Gym • Laundry • Outdoor space • Study space • Bookable private dining area	£123.00		7	40	Hop on the bus at Brown Street and get off at Béton House.	Hop on the campus shuttle bus from outside Heart of the Campus and jump on the bus at Brown Street. Get off at Béton House.
2	 Central Quay S3 8RA	Large hall on the banks of the river Don in the heart of Kelham Island. • Bike storage • Common area • En-suite • Gym • Laundry • Study room	£98.00		15	30	Hop on the bus at Brown Street and get off at Kelham Island.	Hop on the campus shuttle bus from outside Heart of the Campus and jump on the bus at Brown Street. Get off at Kelham Island.
3	 The Elements S2 4FQ	A mix of 4, 5 and 6 bed and self contained flats. Located close to supermarkets and a popular student area. • Bike storage • Cinema room • En-suite • Gym • Laundry • Social spaces • Study room • Wheelchair access	£159.00		15	20	Hop on the bus at Brown Street and get off at London Road.	Take the Collegiate route bus from outside Heart of the Campus and get off at London Road.
4	 Exchange Works S1 4RE	The closest halls to City Campus, which is just a two minute walk away. • Bike storage • Common room • En-suite • Laundry • Outdoor space • Study room	£131.00		2	25	Walk from City Campus to Arundel Street.	Hop on the campus shuttle bus from outside Heart of the Campus and when you arrive at City Campus walk to Arundel Street.
5	 The Forge S2 4QG	Our largest hall of residence with over 1000 rooms near the popular student area of Ecclesall Road. • Basketball half court • Cinema room • En-suite • Games area • Gym • Study room	£114.00		15	15	Hop on the bus at Brown Street and get off at London Road.	Take the Collegiate route bus from outside Heart of the Campus and get off at London Road.
6	 The Gate S1 4RB	Located in Sheffield city centre, The Gate offers a mix of 3, 4, 5 & 7 bed flats; just a 3-minute walk to City Campus! • Bike storage • En-suite • Gym • Laundry • Roof terrace • Sky Lounge • Social spaces	£146.00		3	20	Walk from City Campus to Eyre Street.	Hop on the campus shuttle bus from outside Heart of the Campus and when you arrive at City Campus walk to Eyre Street.
7	 LIV Student S11 8HY	4, 5 & 6 bed flats along with self-contained studios, located in the popular area of Ecclesall Road. • Bike storage • Cinema room • En-suite • Exclusive cafe • Gym • Laundry • Roof terrace • Social spaces	£155.00		15	10	Hop on the bus at Brown Street and get off at Cemetery Road.	Take the Collegiate route bus from outside Heart of the Campus and get off at Cemetery Road.
8	 The Pinnacles S2 5TL	Friendly purpose built student halls with flats for between 3 - 5 students, overlooking Victoria Quays. • Bike storage • Car parking • Common room • En-suite • Games room • Gym • Laundry • Outdoor space • Study room	£99.00		10	35	Hop on the bus at Brown Street and get off at The Pinnacles.	Hop on the campus shuttle bus from outside Heart of the Campus. Jump on the bus at Brown Street. Get off at The pinnacles.
9	 The Trigon S1 4RA	A modern student halls with flats of 3 to 6 bedrooms. Each flat has an open plan kitchen and lounge area. • Bike storage • Common room • En-suite • Laundry • Outdoor space • Wheelchair access	£91.00		5	20	Walk from City Campus to Shoreham Street.	Hop on the campus shuttle bus from outside Heart of the Campus and when you arrive at City Campus walk to Shoreham Street.





OUR CAMPUSES



<u>Accommodation and campuses map</u>	<u>p42</u>
<u>City Campus map</u>	<u>p44</u>
<u>Collegiate Campus map</u>	<u>p46</u>

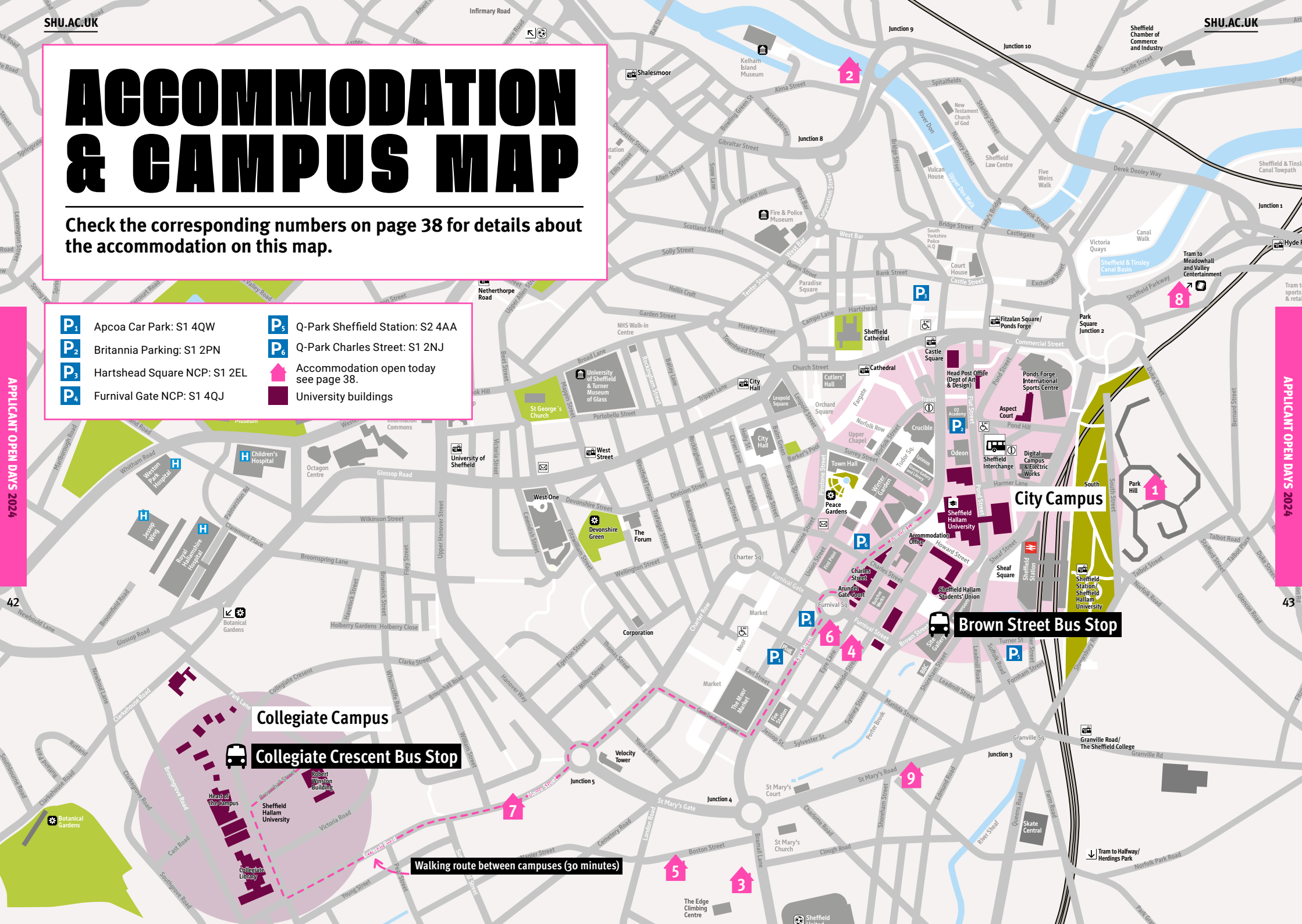
ACCOMMODATION & CAMPUS MAP

Check the corresponding numbers on page 38 for details about the accommodation on this map.

- | | |
|---|---|
| P₁ Apcoa Car Park: S1 4QW | P₅ Q-Park Sheffield Station: S2 4AA |
| P₂ Britannia Parking: S1 2PN | P₆ Q-Park Charles Street: S1 2NJ |
| P₃ Hartshead Square NCP: S1 2EL |  Accommodation open today see page 38. |
| P₄ Furnival Gate NCP: S1 4QJ |  University buildings |

APPLICANT OPEN DAYS 2024

APPLICANT OPEN DAYS 2024



Collegiate Campus

Collegiate Crescent Bus Stop

Walking route between campuses (30 minutes)

City Campus

Brown Street Bus Stop

CITY CAMPUS



- | | | |
|--|----------------------|-------------------------------|
| Bike racks | Cycle Hub | PC locations |
| Bike racks with covered storage | Employability Centre | Place to eat at the open day |
| Bike racks with covered storage (staff only) | Entrance to building | Sports and Fitness facilities |
| Car Park | Hallam Help | University buildings |
| Coach stop - shuttle | Main Reception | |

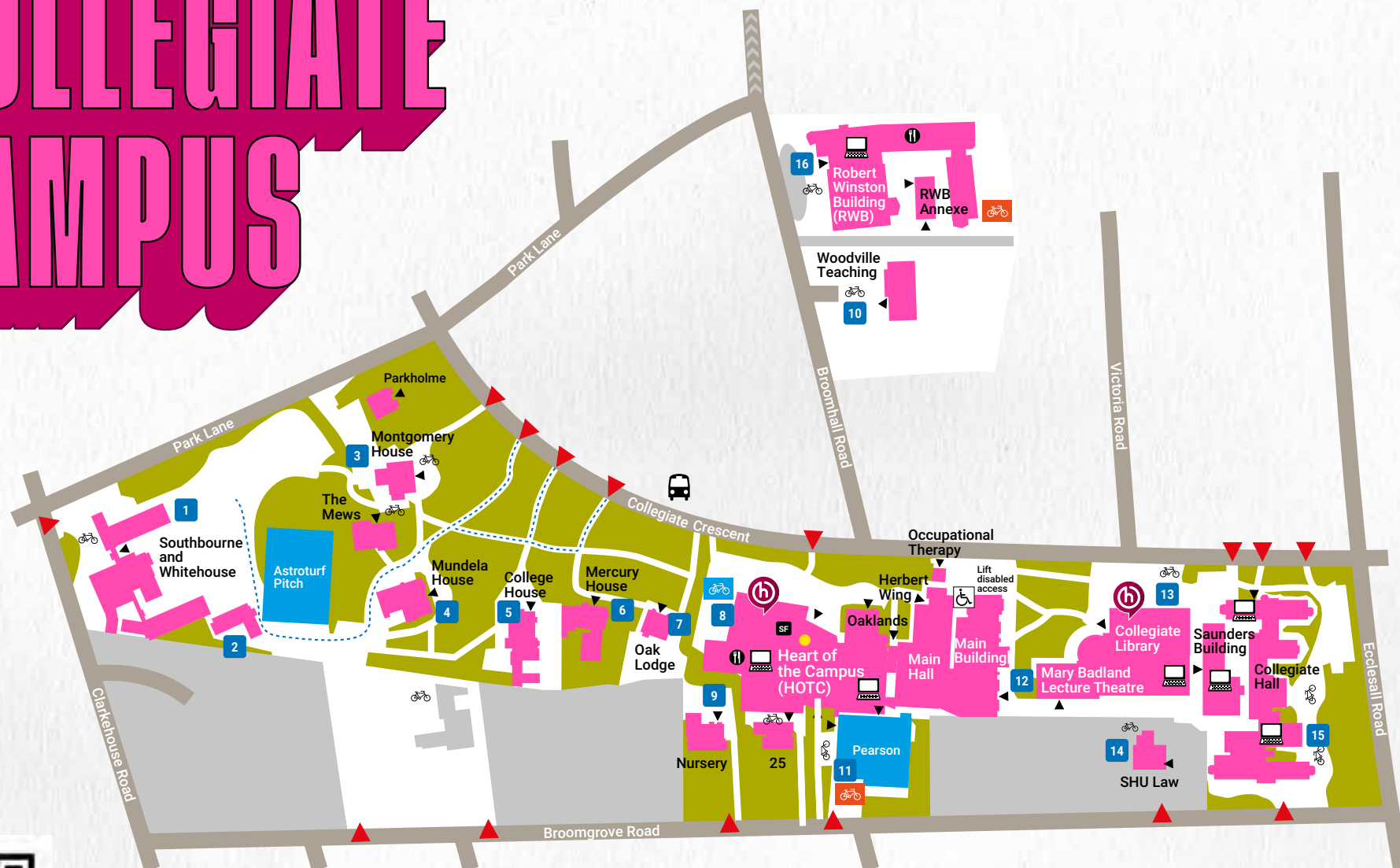


Watch City Campus Tour

COLLEGIATE CAMPUS



Watch Collegiate Campus Tour



- | | | |
|--|--|-------------------------------|
| ▼ Entrance to building | Coach stop - shuttle | ➡➡➡ One way street |
| ▼ Entrance to campus | Disabled access to Chestnut and Willow Court | PC locations |
| Bike racks | Place to eat at the open day | Student Finance Office |
| Bike racks with covered storage | Hallam Help | Sports and Fitness facilities |
| Bike racks with covered storage (staff only) | Main Reception | University buildings |

TAKE
NOTE



Sheffield Hallam University
shu.ac.uk



SCAN FOR ARRIVAL
GUIDANCE & UPDATES

