

POSTGRADUATE OPEN DAY GUIDE 2024

**WEDNESDAY
17 APRIL | 4-7PM
CITY CAMPUS**



WELCOME TO SHEFFIELD HALLAM UNIVERSITY

Our postgraduate open day is your opportunity to talk to staff, tour our City Campus, and get all the information you need.



Make the most of your visit

4

Open days can be crucial in helping you decide where – and what – you want to study. Here's how to get the most out of it.

On the day

5

Find out what goes on during an open day so you can plan your day.

Get into teaching

6

Sheffield Hallam University makes great teachers. Find out how.

Get support whenever you need it

8

Here's how you'll be supported at Hallam.

Course talks and stands

11

Check out the course talks available and where you'll find our academic staff on the day.

Why choose Hallam

20

Find out more about the opportunities available to you at Hallam.

City campus

22

A detailed map of City Campus.

CONTENTS

MAKE THE MOST OF YOUR VISIT

Open days can be crucial in helping you decide where – and what – you want to study. Here’s how to get the most out of it.

Check this guide	This guide includes everything you need to know about today, what time talks are taking place and where you need to be. If you have any questions just ask a member of staff or a student ambassador.
Plan your visit	There’s lots to do at an open day so it’s a good idea to plan your time. Check out page 5 (right) for a list of things you might want to see and do during your visit.
Ask for directions	You can find a map of City Campus on pages 22–23 to help you find your way around. Or just ask us if you aren’t sure, there’ll be plenty of staff and students to help point you in the right direction.
Come and chat to us	We’re here to answer any questions you have about life at Sheffield Hallam, so ask us anything.

 Access for all If you need support during your visit, please let us know. Our disabled student support team will be available to answer any questions on level 5 in the Owen Building at City Campus.	 Photography and video Photos and video may be taken at this event to support our marketing activity. They may appear on our website, social media accounts, email communications, printed marketing materials and third party websites. If you don’t want to be photographed or filmed, just let the photographer know or speak to a member of staff.	 Health and safety A continuous fire alarm is the signal to evacuate the building. Staff and student ambassadors will guide you to your nearest exit and assembly point. An intermittent fire alarm means there could be a fire in an adjacent building. You will be safe where you are and don’t need to evacuate unless the alarm changes to a continuous one. If you need first aid, speak to a member of staff or student ambassador.	 Wi-Fi Network: Wifi-Guest Check your wifi is on. Select “wifi-guest” from the available network list. Follow the on screen instructions. The University does not exercise control over the nature, content or reliability of the information and/or data passing through our network
---	---	--	--

ON THE DAY

There’s so much to do at an open day, it can be hard to know where to start. Try to do these things and you’ll really get a feel for Sheffield Hallam and if we’re right for you.

Check In	When you get here, check in. You can use the QR code we sent you, but don’t worry if you don’t have it, we can still check you in. There are registration points across campus, so just pick the one that suits you: <ul style="list-style-type: none">• Owen Building main entrance• Charles Street Building• Head Post Office Building• Level 2, Atrium	10 mins
Attend the welcome talk	A member of the University’s leadership team welcomes you, alongside current students who will share their insights into studying a postgraduate course here. Head to the lecture theatre at the following time: Peak Lecture Theatre, Level 5, Owen Building at 4.15pm.	30 mins
Discover postgraduate study	Our open day is the perfect place to find out more about studying a masters or research degree. Meet lecturers from your chosen study area and take a tour of the spaces and facilities where you will study. See the schedule starting on page 11.	1-2 hours
Take a campus tour	Explore some of the facilities that support your learning on a student-led tour of our Adsetts Library and the City Campus. There’s more information on page 22. Tours leave from Owen Building Level 5. The last tour of the City Campus will take place at 6:30pm.	30 mins
Find out about support	Got any questions about what support and help you’ll have as a student here? Talk to our staff or attend a talk on your chosen topic. See page 8 for the schedule.	30 mins

GET INTO TEACHING AT SHEFFIELD HALLAM

SHEFFIELD HALLAM UNIVERSITY MAKES GREAT TEACHERS

We've been doing it since 1905, and we're now one of the UK's biggest providers of early years, primary, secondary and post-16 teacher training at undergraduate and postgraduate levels.

We train over 850 new teachers a year, blending the latest research and innovative teaching practices with superb placements. Whether you're just starting out or want to develop your career, you can choose from flexible options to help you study in the way that suits you best.



3 REASONS TO CHOOSE HALLAM

Our teacher-training placements

We offer one of the largest and most diverse range of placements in the region. We've built up a network of over 600 partner schools, colleges and other educational establishments, and we work together to our mutual advantage.

Support from our tutors

Our experienced tutors support you throughout the course and while you're on your placement. All our tutors have experience in schools, colleges or early years settings, and they stay up to date with current teaching methods and legislative changes.

Excellent facilities

You will study at our centre of education that is recognised for excellence and innovation in teaching and learning. Our academics, researchers and partners in schools work together to ensure you become a committed and professional graduate, with the opportunity to return to us throughout your career to further your professional development.



TALKS AND STANDS

Subject area	Talk location	Talk time	Chat to us: 4-7pm.
Get into Teaching - Welcome Talk	Room 12.0.06, The Dorothy Fleming Lecture Theatre Charles Street Building	4.15-4.45pm	Visit our Charles Street Building to discover more about our teaching courses and to speak to our partners across the region.
Get into Teaching - Admissions, Fees and Finance Talk	Room 12.0.06, The Dorothy Fleming Lecture Theatre Charles Street Building	6.30-7pm	
Find the right teaching course for you	For today's Get into Teaching talks please visit our course talks schedule on pages 14-16.		

Find out more at shu.ac.uk/teach

SUPPORT AT HALLAM

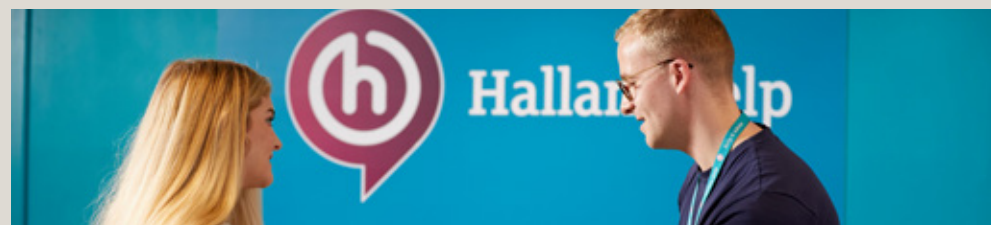
SUPPORT TALKS

Talk subject	When	Where?
Postgraduate Study Welcome Talk A member of the University's leadership team welcomes you, alongside a current student who will share their insights into studying a postgraduate course here.	4.15-4.45pm	Peak Lecture Theatre, Owen Building, Level 5
Admissions, Funding and Finance Find out about the application process, funding available and how to apply for it.	5-5.30pm 5.45-6.15pm	



CHAT TO US ABOUT SUPPORT

What do you want to find out about?	Chat to us
Accommodation An overview of our accommodation options and advice on how to apply.	Owen Building, Level 5 4-7pm
Admissions Have you got a question about applying? Our admissions team will be available to provide advice.	
Careers and Employability Service We are here to help you make the most of your postgraduate study and support and develop your career plan whether you have a clear idea or want to explore options. <ul style="list-style-type: none"> • Career Guidance looking at your options with your postgraduate course • Researching sectors, organisations, and career paths • Finding and applying for jobs and placements • Writing a CV, application form or personal statement • Interview techniques and assessment centre preparation 	
Student Support and Funding Talk to us about the student loan and Disabled Student Allowance application process and the wide range of support and wellbeing services we offer.	



CHAT TO US ABOUT SUPPORT

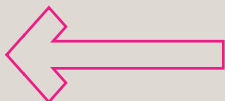
Drop-in sessions	Chat to us
Sport Hallam Sport Hallam provides a wide range of programmes, initiatives and services to support you to get active, meet people, keep fit, look after your mental and physical health, try something new or continue with your hobby or passion. We pride ourselves on our inclusive approach, supporting beginners and people new to sport right through to elite and dual career athletes. Come and talk to our team today.	Owen Building, Level 5 4-7pm
Hallam Students' Union Your biggest champions fighting to make your uni experience the best it can be. Whether it's great times, big opportunities, making change or helping hands, the SU has your back. Make friends for life, learn new skills, and change the university for the better. Follow @hallamsu or check out hallamstudentsunion.com to see more.	
PhDs / Doctoral School Chat to us for general information on how to apply for research degrees at SHU.	Heartspace, Level 2, Atrium 4-7pm
Library Services Chat to us about the Library's 24/7/365 spaces and resources, the sessions we offer to support your academic skills development, and how we support every student at Sheffield Hallam University to become an independent learner and to be successful in their studies.	

DROP-IN SUBJECT TALKS

Drop-in sessions	Chat to us
Art and design drop-in Come along to a Q&A session and meet the tutors.	Head Post Office Building 4.30-7pm



3 ADVISERS LOOKING OUT FOR YOU



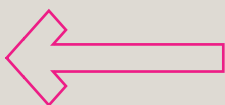
Academic adviser: Your performance

There to support your academic journey, helping you achieve your goals and guiding you through options for further study and development.



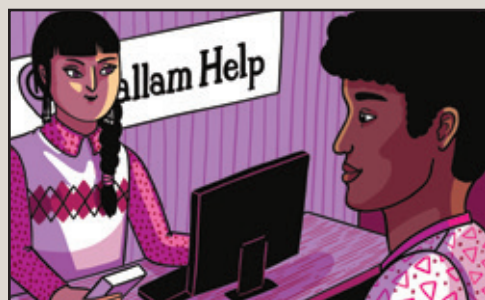
Employability adviser: Your career

There to help you plan for your future career, providing specialist work experience and graduate job search support to help you stand out to employers and achieve your potential.



Student support adviser: Your welfare

There to give you support and advice if difficulties arise that affect your ability to study, and help you access specialist services when you need them.



We know from experience that students achieve more with the right support. Our advisers are beside you throughout your postgraduate journey, helping you transition to a new level of study and plan for your future.

3 dedicated advisers

In your first few weeks you'll meet three contacts. One helps with your studies, one provides any personal support or advice you need, and one helps you start or advance your career.

They'll be with you every step of the way, so they'll get to know your needs and interests – giving you a dedicated personal support service from the moment you start right through to graduation.

Instant answers on the go

Wherever you are you can easily access support. You can find the answers to lots of questions, get directions and access further support online or by calling one of our advisers. When you are on campus, you'll always be near a Hallam Help point – there are 11 in total.

Safe spaces

Need to talk about something sensitive? Our support services are fully confidential, and have private rooms for one-to-one consultations.

COURSE TALKS

Chat to us
from 4-7pm.

Subject area	Talk location	Talk time	Details	Course stand name and location
Accounting, Banking and Finance	Room 922 Owen Building	5.45-6.15pm	This talk provides an overview of courses including Accounting and Finance, Forensic Accounting, Financial Management, Finance and Investment, Banking and Finance, Wealth Management and Global Financial Trading, which are part of the Department of Finance, Accounting and Business Systems at Sheffield Business School.	Accounting, Banking and Finance stand Heartspace, Level 2, Atrium
Allied Health Professions (Pre-Registration)	Room 123 Owen Building The Void	5.15-6pm	Thinking about a career in health and social care? This talk is an introduction to the Pre-Registration masters routes to occupational therapy, dietetics, physiotherapy and radiotherapy and oncology, it will also include a question and answer session.	Pre-Registration Allied Health Professions stand Heartspace, Level 2, Atrium
Applied Human Rights	Room 943 Owen Building	5.45-6.15pm	This talk covers MA Applied Human Rights and LLM Applied Human Rights.	Law, Criminology and Applied Human Rights stand Heartspace, Level 2, Atrium
Architecture	Room 209 Norfolk Building	5-5.30pm	This talk provides an overview of architecture and technical architecture courses.	Architecture stand Heartspace, Level 2, Atrium
Art Psychotherapy Practice	Room 210 Norfolk Building	4.15-4.45pm	This talk provides an overview of MA Art Psychotherapy Practice. You can find out more about this course by visiting our Pre Registration Allied Health Professions stand.	Pre-Registration Allied Health Professions stand Heartspace, Level 2, Atrium
Art & Design - Animation	Post Hall, Head Post Office	4.30-5.45pm	This talk provides an overview of MA Animation and MA Computer Animation. Refreshments will be served from 4.30pm in the Post Hall, a welcome talk will take place between 4.30-5pm followed by course talks at 5pm for approximately 45 minutes. Following the talks, at 5.45pm there will be an optional tour of the facilities, ending with a question and answer session taking place in the Post Hall between 6.15pm and 7pm.	Art and Design stand Post Hall, Head Post Office Building

Subject area	Talk location	Talk time	Details	Course stand name and location
Art & Design - Design	Post Hall, Head Post Office	4.30-5.45pm	This talk provides an overview of MA Design (Interior), MA Design (Product), MA Design (Packaging), MA Design (Graphics), MA Design (Illustration), MA Design (Fashion), MA Design (Interaction). Refreshments will be served from 4.30 in the Post Hall, a welcome talk will take place between 4.30-5pm followed by course talks at 5pm for approximately 45 minutes. Following the talks, at 5.45pm there will be an optional tour of the facilities, ending with a question and answer session taking place in the Post Hall between 6.15pm and 7pm.	Art and Design stand Post Hall, Head Post Office Building
Art & Design - Design For Health	Post Hall, Head Post Office	4.30-5.45pm	This talk provides an overview of MA Design for Health. Refreshments will be served from 4.30pm in the Post Hall, a welcome talk will take place between 4.30-5pm followed by course talks at 5pm for approximately 45 minutes. Following the talks, at 5.45pm there will be an optional tour of the facilities, ending with a question and answer session taking place in the Post Hall between 6.15pm and 7pm.	Art and Design stand Post Hall, Head Post Office Building
Art & Design - Design For Sports Performance	Post Hall, Head Post Office	4.30-5.45pm	This talk provides an overview of MA Design for Sports Performance. Refreshments will be served from 4.30pm in the Post Hall, a welcome talk will take place between 4.30-5pm followed by course talks at 5pm for approximately 45 minutes. Following the talks, at 5.45pm there will be an optional tour of the facilities, ending with a question and answer session taking place in the Post Hall between 6.15pm and 7pm.	Art and Design stand Post Hall, Head Post Office Building
Art & Design - Fine Art	Post Hall, Head Post Office	4.30-5.45pm	This talk provides an overview of MFA Fine Art. Refreshments will be served from 4.30pm in the Post Hall, a welcome talk will take place between 4.30-5pm followed by course talks at 5pm for approximately 45 minutes. Following the talks, at 5.45pm there will be an optional tour of the facilities, ending with a question and answer session taking place in the Post Hall between 6.15pm and 7pm.	Art and Design stand Post Hall, Head Post Office Building
Art & Design - Jewellery & Metalwork	Post Hall, Head Post Office	4.30-5.45pm	This talk provides an overview of MA Jewellery & Metalwork. Refreshments will be served from 4.30pm in the Post Hall, a welcome talk will take place between 4.30-5pm followed by course talks at 5pm for approximately 45 minutes. Following the talks, at 5.45pm there will be an optional tour of the facilities, ending with a question and answer session taking place in the Post Hall between 6.15pm and 7pm.	Jewellery and Metalwork stand Post Hall, Head Post Office Building

Subject area	Talk location	Talk time	Details	Course stand name and location
Art & Design - Photography	Post Hall, Head Post Office	4.30-5.45pm	This talk provides an overview of MA Photography. Refreshments will be served from 4.30pm in the Post Hall, a welcome talk will take place between 4.30-5pm followed by course talks at 5pm for approximately 45 minutes. Following the talks, at 5.45pm there will be an optional tour of the facilities, ending with a question and answer session taking place in the Post Hall between 6.15pm and 7pm.	Art and Design stand Post Hall, Head Post Office Building
Biosciences and Chemistry	Room 503 Norfolk Building	5.45-6.45pm	This talk provides an overview of the Biosciences, Chemistry and Research degree courses and includes an optional 30 minute tour of the facilities.	Biosciences and Chemistry stand Heartspace, Level 2, Owen Building
Business, Management and Marketing	Room 942 Owen Building	5pm-5.45pm	This talk will provide an overview of the following subject areas: Business and Management, Human Resource Management, Marketing and the MBA Programme.	Business and Management stand Heartspace, Level 2, Atrium
Computing	Room 201 Norfolk Building	5pm-5.30pm	This talk provides an overview of the Department of Computing masters courses, which includes: MSc Cyber Security, MSc Artificial Intelligence, MSc Computing, MSc Advanced Computer Networks, MSc Big Data Analytics, MSc Data Analytics with Banking and Finance and MSc IT Management.	Computing stand Heartspace, Level 2, Atrium
Construction, Real Estate, Building and Quantity Surveying	Room 207 Norfolk Building	5.45pm-6.15pm	This talk covers the following: MSc Building Surveying, MSc Construction Project Management, MSc Quantity Surveying and MSc Real Estate.	Construction, Real Estate, Building and Quantity Surveying stand Heartspace, Level 2, Owen Building
Creative Writing	Room 920 Owen Building	5.45-6.15pm	This talk provides an overview of the MA Creative Writing course, including the standalone modules we offer, and an opportunity to discuss the content of the course and your portfolio with the tutor(s). Academics for this course will be located on the english subject stand.	English and Creative Writing stand Heartspace, Level 2, Atrium
Criminology	Room 920 Owen Building	5pm-5.30pm	This talk provides an overview of the MSc Criminology and Criminal Justice Practice course.	Criminology stand Heartspace, Level 2, Atrium

Subject area	Talk location	Talk time	Details	Course stand name and location
Dietetics	To learn more about MSc Dietetics (Pre Registration) you can attend the Pre Registration Allied Health Professions talk at 5.15pm. You can also find out more about this course by visiting the Pre-Registration Allied Health Professions stand.			Pre-Registration Allied Health Professions stand Heartspace, Level 2, Atrium
Digital Media Management	Room 5424 Howard Building	5-5.30pm	This talk provides an overview of the MA Digital Media Management programme. For further information visit the media arts stand.	Media Arts stand Heartspace, Level 2, Atrium
Education - Autism	Room 12.3.17 Charles Street Building	5-5.30pm	This talk provides an overview of autism, autism spectrum and Asperger syndrome courses.	Autism stand Ground Floor, Charles Street Building
Education - Masters in Education	Room 12.4.12 Charles Street Building	5-45-6.15pm	This talk provides an overview of MA Education.	Masters in Education stand Ground Floor, Charles Street Building
Education - Doctorates in Education and Research Degrees in Education	Room 12.3.18 Charles Street Building	5-5.30pm	This talk covers MPhil/PhD Education - Research Degree, Doctorate in Education. An information session covering similarities and differences between education doctorates (PhD and the Doctorate in Education) including guidance on the application process.	Masters in Education stand Ground Floor, Charles Street Building
Education - TESOL	Room 12.4.18 Charles Street Building	5-5.30pm	This talk provides an overview of teaching English courses.	TESOL stand Ground Floor, Charles Street Building
Engineering	Room 201 Norfolk Building	5-45-6.45pm	This talk provides an overview of the engineering, mechanical engineering, logistics and robotic courses and research degrees and includes an optional 30 minute tour of facilities.	Engineering stand Heartspace, Level 2, Atrium
Events Management	Room 1239 Owen Building	4.15-4.45pm	This talk provides an overview of our MSc International Events Management and MSc International Events Management with Work Experience courses.	Events Management stand Heartspace, Atrium Level 2

Subject area	Talk location	Talk time	Details	Course stand name and location
Filmmaking	Room 5420 Howard Building	5-45-6.15pm	This talk provides an overview of the MA Filmmaking course.	Media Arts stand Heartspace, Level 2, Atrium
Food and Nutrition	Room 1239 Owen Building	5-45-6.15pm	This talk provides an overview of our MSc courses in MSc Food and Nutrition Sciences, MSc Food Consumer Marketing and Product Development and MSc Nutrition for Public Health Management, including work experience routes.	Food and Nutrition stand Heartspace, Level 2, Atrium
Get into Teaching - EYTS (0-5)	Room 12.4.12 Charles Street Building	5-5.30pm	This talk provides an overview of PGCE Early Childhood Education and Care (0-5) with EYTS (graduate employment route), PGCE Early Childhood Education and Care (0-5) with EYTS (graduate entry route).	Get into Teaching - EYTS (0-5) stand Ground Floor, Charles Street Building
Get into Teaching - Post 16	Room 12.4.17 Charles Street Building	5-45-6.15pm	This talk provides an overview of PGCE Post 16 and Further Education (full time only).	Get into Teaching - Post 16 stand Ground Floor, Charles Street Building
Get into Teaching - Primary (3-7) and Primary (5-11)	Room 12.0.06, The Dorothy Fleming Lecture Theatre Charles Street Building	5-45-6.15pm	This talk provides an overview of PGCE Early Years and Primary Education (3-7) With QTS, PGCE Primary Education (5-11) with QTS, PGCE Primary (5-11) PE Specialist with QTS.	Get into Teaching- Primary (3-7) and (5-11) stand Ground Floor, Charles Street Building
Get into Teaching - Secondary	Room 12.0.06, The Dorothy Fleming Lecture Theatre Charles Street Building	5-5.30pm	This talk provides an overview of PGCE Secondary Business Education, Business Studies, PGCE Secondary Design and Technology, PGCE Secondary Computing, PGCE Secondary English, PGCE Secondary Mathematics, PGCE Secondary Modern Foreign Languages, PGCE Secondary Religious Education, PGCE Secondary Physical Education, PGCE Secondary Citizenship, Secondary Citizenship and PSHE with Post-16 Enhancement, PGCE Secondary Geography, PGCE Secondary History, PGCE Secondary Science (Physics), PGCE Secondary Science (Chemistry), PGCE Secondary Science (Biology), CPD in Design and Technology Education, PGCE in Design and Technology, PGCE Secondary Design and Technology (Food Technology), PGCE Secondary Art and Design.	Get into Teaching - Secondary stand Ground Floor, Charles Street Building

Subject area	Talk location	Talk time	Details	Course stand name and location
Global Communication and Media	Room 5425 Howard Building	5-5.30pm	This talk provides an overview of the Global Communication and Media course.	Journalism, PR and Media stand Heartspace, Level 2, Atrium
Human Resources	Room 942 Owen Building	5pm-5.45pm	This talk will provide an overview of the following subject areas: Business and Management, Human Resource Management, Marketing and the MBA Programme.	Human Resources stand Heartspace, Level 2, Atrium
International Relations and Global Crises	Room 208 Norfolk Building	5.45-6.15pm	This talk provides an overview of the MA International Relations and Global Crises course.	Politics and International Relations stand Heartspace, Level 2, Atrium
Legal Professional Practice	Room 943 Owen Building	5-5.30pm	This talk covers LLM Legal Professional Practice.	Law, Criminology and Applied Human Rights stand Heartspace, Level 2, Atrium
LLM International Sports Law in Practice	Room 943 Owen Building	4.15-4.45pm	This talk provides an overview of LLM International Sports Law in Practice.	Law, Criminology and Applied Human Rights stand Heartspace, Level 2, Atrium
Marketing	Room 942 Owen Building	5pm-5.45pm	This talk will provide an overview of the following subject areas: Business and Management, Human Resource Management, Marketing and the MBA Programme.	Marketing stand Heartspace, Level 2, Atrium
MBA	Room 942 Owen Building	5pm-5.45pm	This talk will provide an overview of the following subject areas: Business and Management, Human Resource Management, Marketing and the MBA Programme.	Business and Management stand Heartspace, Level 2, Atrium
Media Arts - Game Art	Room 5424 Howard Building	5.45-6.15pm	This talk provides an overview of the MA Game Art course.	Media Arts and Games Art stand Heartspace, Level 2, Atrium

Subject area	Talk location	Talk time	Details	Course stand name and location
Nursing (Pre-Registration)	Room 210 Norfolk Building	5-5.30pm	This talk provides an overview of the MSc Nursing (Adult or Mental Health) You can also find out more about these courses by visiting our Pre Registration Nursing stand.	Pre-Registration Nursing stand Heartspace, Level 2, Atrium
Nursing (Post-Registration)	Room 210 Norfolk Building	5.45-6.15pm	This talk provides an introduction to MSc Physician Associate Studies, MSc Midwifery, MSc Advancing Clinical Practice, MSc Nursing (Public Health), MSc Nursing Studies, MSc Health and Social Care Leadership, MSc Health and Social Care Education, MSc/PgDip Specialist Practice District Nursing, MSc Child Adolescent and Family Mental Health, MSc Perinatal Mental Health and PgDip Specialist Community Public Health Nursing (School Nursing). You can find out more about these courses by visiting our Post-Registration Nursing stand.	Post-Registration Nursing stand Heartspace, Level 2, Atrium
Occupational Therapy	To learn more about MSc Occupational Therapy (Pre Registration) you can attend the Pre-Registration Allied Health Professions talk at 5.15pm. You can also find out more about this course by visiting the Pre-Registration Allied Health Professions stand.			Pre-Registration Allied Health Professions stand Heartspace, Level 2, Atrium
Physiotherapy	To learn more about MSc Physiotherapy (Pre Registration) you can attend the Pre Registration Allied Health Professions talk at 5.15pm. You can also find out more about this course by visiting the Pre Registration Allied Health Professions stand.			Pre-Registration Allied Health Professions stand Heartspace, Level 2, Atrium
Public Relations and Sports Journalism	Room 5425 Howard Building	5.45-6.15pm	This talk provides an overview of the public relations and sports journalism courses.	Journalism, PR and Media stand Heartspace, Level 2, Atrium
Psychology (Conversion)	Room 1029 Owen Building	5.45pm-6.15pm	This talk provides an overview of the psychology and developmental psychology courses.	Psychology stand Heartspace, Level 2, Atrium
Psychology (Specialist Masters)	Room 1029 Owen Building	4.45-5.30pm	This talk provides an overview of the forensic psychology, health psychology and clinical cognitive neuroscience courses.	Psychology stand Heartspace, Level 2, Atrium

Subject area	Talk location	Talk time	Details	Course stand name and location
Social Science and Public Health	Room 208 Norfolk Building	5-5.30pm	This talk provides an overview of the MRes Social Science course and the MSc Public Health course.	Sociology stand Heartspace, Level 2, Atrium
Social Work and Social Care	Room 503 Norfolk Building	5-5.30pm	This talk provides an overview of MSW Social Work.	Social Work and Social Care stand Heartspace, Level 2, Atrium
Sport and Physical Activity	There is no talk for this subject - please visit us on the stand for further information about the Applied Sport and Exercise Science, Sport and Exercise Psychology, Sport Business Management, Sport Engineering and Strength and Conditioning courses.			Sport stand Heartspace, Level 2, Atrium
Therapeutic Radiography	To learn more about MSc Radiotherapy and Oncology in Practice (Pre Registration) you can attend the Pre Registration Allied Health Professions talk at 5.15pm. You can also find out more about this course by visiting the Pre Registration Allied Health Professions stand.			Pre-Registration Allied Health Professions stand Heartspace, Level 2, Atrium
Tourism and Hospitality Management	Room 1239 Owen Building	5-5.30pm	This talk provides an overview of our MSc courses in International Tourism, Aviation and Hospitality, including courses with work experience routes.	Tourism and Hospitality Management stand Heartspace, Level 2, Atrium
Urban Planning, Geographical Information Systems (GIS) and Environmental Management	Room 207 Norfolk Building	5-5.30pm	This talk provides an overview of the following: MSc Urban Planning, MSc Geographical Information Systems & MSc Environmental Management.	Urban Planning, Geographical Information Systems and Environmental Management stand Heartspace, Level 2, Atrium



REASONS TO BECOME A POSTGRADUATE STUDENT



Postgraduate study is a great opportunity to study more of what you love, switch your career focus or specialise in a new subject area. With a postgraduate qualification, you can make your CV stand out and build your experience, skills and contacts for your future career. Here are just a few reasons why you should become a postgraduate student at Sheffield Hallam.



CHOOSE A NEW CAREER DIRECTION

‘My academic career was made possible because of the experience and support that I received at Sheffield Hallam.’

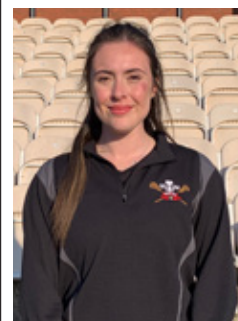
Dr Francis Awolowo, MSc student in Forensic Accounting and course leader and lecturer at Sheffield Hallam University.



BUILD YOUR EXPERIENCE

‘Sheffield Hallam’s art and design department has great equipment and machinery and you have the chance to explore what you’re interested in.’

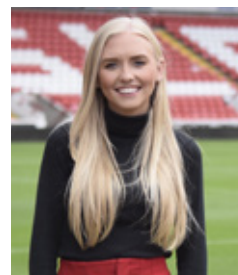
Divya Potluri, MA Design Jewellery and Metalwork



INCREASE YOUR CONFIDENCE

‘I find myself using the skills I learnt on my masters continuously, whether that be simply planning delivery of sessions to my netball players or tracking the workload of my lacrosse players’

Lizzy Butler-Clack, MSc Strength and Conditioning Coaching and junior intern in the Team Hallam Strength and Conditioning suite.



GREAT TEACHING, GREAT OUTCOMES

‘My masters helped prepare me for the demands of the industry I am in today... we were not just learning and studying for an exam, we were learning to better our professional practice.’

Eleanor Dobson, LLM International Sports Law in Practice graduate and Club Secretary and Legal Counsel at Barnsley Football Club.

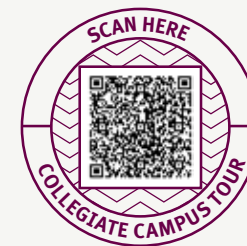
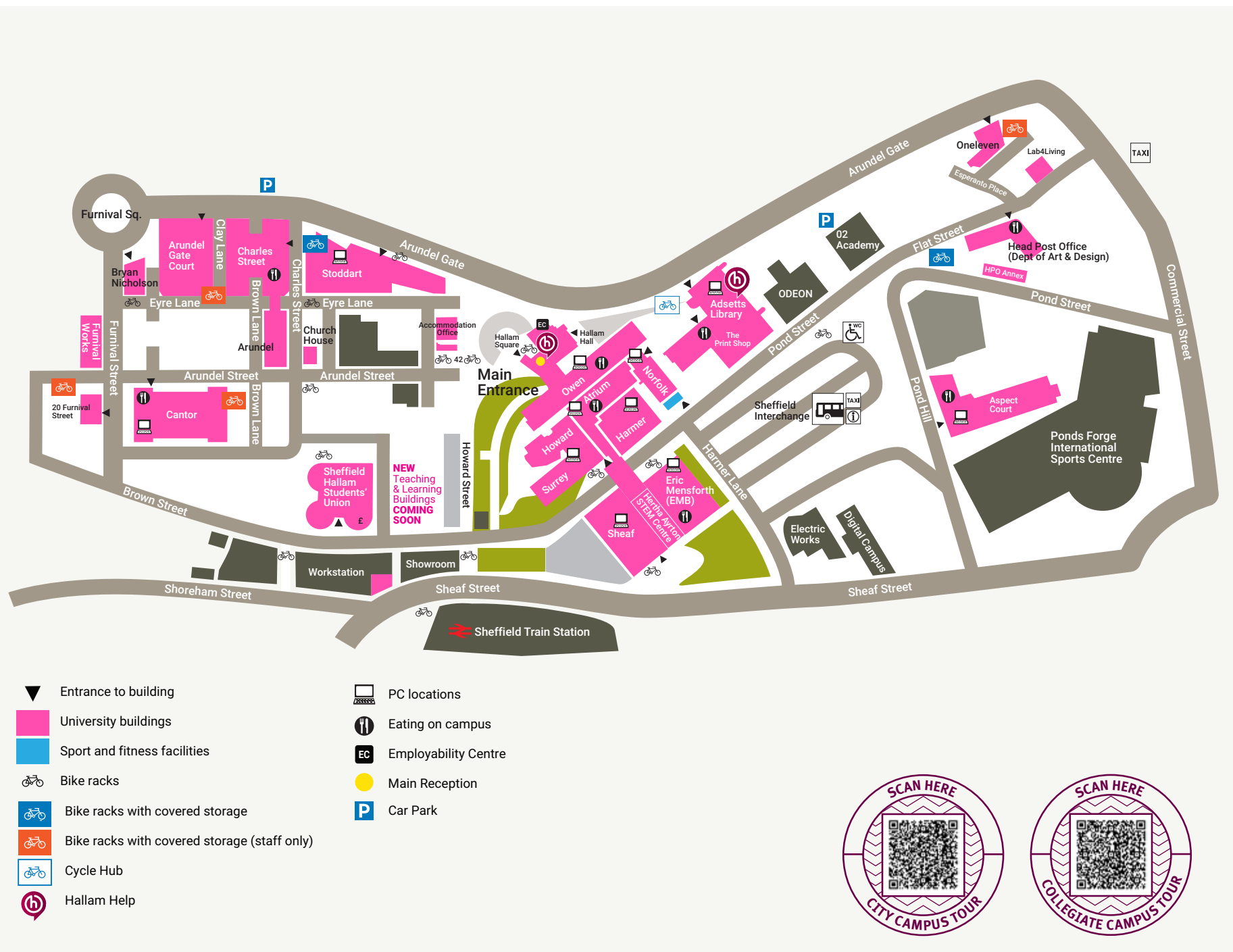
A masters loan of up to £12,167 is available and a doctoral loan of up to £28,673 is available for most subject areas when starting a course in the 2024/25 academic year. We also have a range of scholarships and discounts available. For the latest information & eligibility criteria, visit shu.ac.uk/funding

CITY CAMPUS

City Campus is in the middle of Sheffield city centre, just minutes from the bus and train stations. The buildings you study in are surrounded by shops, cafes, sports centres and cinemas – everything in the city centre is right on your doorstep.

TAKE A TOUR

Take a walking tour of City Campus led by our students. The tours last 30 minutes and run between 4pm and 7pm – Tours leave from Owen Building Level 5 throughout the event. The last tour takes place at 6.30pm.



TAKE
NOTE



Sheffield Hallam University
shu.ac.uk



Scan for Arrival
Guidance and Updates

