

**Sheffield
Hallam
University**

**YOUR GUIDE
TO OUR JULY**



**OPEN
DAY**



WELCOME TO HALLAM

JULY OPEN DAY 2026

2



Plan your day	4	Maps	42
How to get around	6	Campus and accommodation map	44
Course talks and stands	8	City Campus map	46
Support talks and stands	30	Collegiate Campus map	48
Accommodation	38		



Access for all

If you need support during your visit, please let us know. You can contact us before the event on 0114 225 5533 or speak to a member of staff on the day. Our student support team will be available to answer any questions in Heartspace Atrium, Level 2, Owen Building at City Campus and in Heart of the Campus at Collegiate Campus.

Check out the Sheffield Hallam University pages on the **AccessAble** website for more information on our campus.



Photography and video

Photos and video may be taken at this event to support our marketing activity. They may appear on our website, social media accounts, email communications, printed marketing materials and third party websites. If you don't want to be photographed or filmed, just let the photographer know or speak to a member of staff.



Health and safety

A fire alarm is the signal to evacuate the building. Staff and student ambassadors will guide you to your nearest exit and assembly point.

If you need first aid, speak to a member of staff or student ambassador.



Where to eat and drink

You can pick up something to eat or drink in our university outlets located across both campuses. Outlets open 9am-2pm.

City Campus

- Hallam Café – Atrium, Level 5
- Langsett Building
- Head Post Office

Collegiate Campus

- The Granary – Heart of the Campus



Wi-Fi Network: WIFI-GUEST

Check your Wi-Fi is on. Select 'WIFI-GUEST' from the available network list. Follow the on-screen instructions. The University does not exercise control over the nature, content or reliability of the information and/or data passing through our network.

SCAN FOR FULL DETAILS INCLUDING OPENING TIMES



JULY OPEN DAY 2026

3

How to get here

Find campus locations and information about getting here, including car parking near our campuses. You can also check out page 7 for more advice on getting around and page 44 for campus and parking maps.



SEARCH: SHU HOW TO FIND US



We aim to create a safe and inclusive space for all. If you would prefer a less busy schedule at the open day, or need a quiet space, please check out our arrival guidance via the QR code above. Look for the "Quieter open day" link at the top of the web page.



PLAN YOUR DAY

There's so much to do at an open day, it can be hard to know where to start. To really get a feel for Sheffield Hallam University and to find out if it's the right place for you, try to check out these key elements. It all starts at 9.30am and finishes at 3.30pm.



Check in



When you get here, check in. We'll ask you for the QR code that we sent you when you booked, but don't worry if you don't have it. You can check in at various locations across campus, so just pick the one that suits you.

🕒 10 MINS

Welcome talk



Start your day with a brief introduction to Sheffield Hallam University from our staff and students. Head to your nearest lecture theatre at the following times:

City Campus

- Pennine Lecture Theatre, Level 2, Owen Building, 9.45–10.15am
- Pennine Lecture Theatre, Level 2, Owen Building, 10.30–11am
- Pennine Lecture Theatre, Level 2, Owen Building, 12.45–1.15pm

🕒 30 MINS

Collegiate Campus

- Room HC.0.06, Heart of the Campus, 10–10.30am

Rooms may be subject to change. Please scan the QR code on the back of this guide for the most up-to-date information on our arrival guidance page.

Discover your course



Meet lecturers and students from your chosen course. You may have the opportunity to visit the spaces and facilities where you will study. See the schedule starting on page 8.

🕒 1-2 HOURS

Support talks and stands



Got any questions about what support and help you'll have as a student here? Chat to our staff or attend a talk on your chosen topic. See page 30 for the schedule.

🕒 1-2 HOURS

Explore accommodation



Take a look around our halls of residence and talk to students about what it's like to live there. Speak to staff at City and Collegiate Campus about how to visit our accommodation sites today. Find out more starting page 40.

🕒 1-2 HOURS

Take a campus tour



Imagine yourself as a Hallam student and take a tour of our campuses including our 24-hour libraries. There are maps of our campuses on pages 44–48. Visit the stand at any time during the day.

🕒 45 MINS

City Campus tour - Meet at Level 5, Owen Building
Collegiate Campus tour - Meet at Heart of the Campus

Take a city tour



Choosing a university is about more than the course – the city must be right too. Sheffield's a brilliant place to live and study – make sure you save some time to explore. You can also take a walking tour of the city if you wish. Take a look at page 44 to see how our campus fits into the city.

🕒 45MINS

City centre tours set off at 11.30am, 1.30pm and 2.30pm from Level 5, Owen Building.





HOW TO GET AROUND



We're a large institution with two campuses and hundreds of learning spaces - you can find maps and directions on pages 44–48. Just ask for help if you're unsure and we can help you navigate to where you need to be!

City or Collegiate Campus?

Different subjects are based across our City and Collegiate campuses, so it is important you are at the correct one for your course. Check where your course subject talks are (from page 8 onwards) and make sure you are heading for the right one.

Moving between campuses

It's just 30 minutes' walk or you can take our free shuttle bus between our two campuses between 9am–3.30pm. Please allow 30 mins travel time.

- If you're at City Campus, get the bus from Brown Street.
- If you're at Collegiate Campus, get the bus from Collegiate Crescent.

Find campus maps and more detailed directions on pages 44–48.

How long does it take to get between buildings?

From the main entrance at our Owen Building, City Campus it is:

- a 2 minute walk to the Atrium and the Howard, Norfolk and Surrey buildings

- a 2 minute walk to the Langsett, Strines and Redmires buildings
- a 5 minute walk to the Charles Street building
- a 5 minute walk to the Cantor building
- a 5 minute walk to the Eric Mensforth and Hertha Ayrton buildings
- a 10 minute walk to the Head Post Office building

From our main entrance at Heart of the Campus, Collegiate Campus it is:

- a 5 minute walk to the Robert Winston building
- a 5 minute walk to the Mary Badland Lecture Theatre
- a 5 minute walk to the Main building

Ask for help

We've posted friendly student ambassadors and staff all over our campus, so you'll never be too far from someone who can direct you. Just ask if you need pointing in the right direction.

City Campus	Collegiate Campus
Howard Street, Sheffield, S1 1WB (if you're using satnav please use S1 4RF) what3words: ///rubble.spin.fleet	Collegiate Crescent, Sheffield, S10 2BP what3words: ///royal.send.seats





OUR TALKS AND STANDS

Course talks and stands	10
Support talks and stands	30

COURSE TALKS AND STANDS

City Campus
 Collegiate Campus



Introductory talks	Where	When	Courses covered	Further details	Course stand name and location
Interested in a career in Allied Health (Diagnostic Radiography, Occupational Therapy, Operating Department Practice, Paramedic Science, Physiotherapy, Radiotherapy and Oncology)? Begin your journey here with an overview of the exciting and diverse opportunities available.	Mary Badland Lecture Theatre, Collegiate Campus	10.45–11.30am	Diagnostic Radiography, Occupational Therapy, Operating Department Practice, Paramedic Science, Physiotherapy and Radiotherapy and Oncology.	An introduction to the courses in the Allied Health Professions.	Please visit your course stand for more information.
Nursing and Midwifery Introduction	Room HC.0.06, Heart of the Campus, Collegiate Campus	11.45am–12.30pm	Nursing (Adult), Nursing (Child), Nursing (Mental Health), Midwifery and Learning Disability Nursing and Social Work.	An introduction to the courses covered by the Department of Nursing and Midwifery.	Please visit your course stand for more information.
Social Work and Social Care Introduction	Room HC.0.32, Heart of the Campus, Collegiate Campus	12.15–12.45pm	Social Work, and Working with Children, Young People and Families.	An introduction to the courses covered by the Department of Social Work and Social Care and Community Studies.	Please visit your course stand for more information.
The Sheffield Business School Student Experience	Room 37.00.01, Strines Building, City Campus Room 38.01.01, Langsett Building, City Campus	10.30–11.00am 12.45–1.15pm	Join us to hear about the Sheffield Business School Student Experience. You will be welcomed by a member of the Sheffield Business School Leadership team as we share how joining Sheffield Business School opens up many opportunities for you to get the knowledge, skills and connections for your future success.	Join us to hear about opportunities to study abroad, to gain placements, complete consultancy projects, start your own side-hustle and hear graduate success stories to inspire you.	Visit our course stands in Langsett Building.
Studio tours	Where	When	Courses covered	Further details	Course stand name and location
Sheffield Creative Industries Institute Foundation Year Studio Tours	Meet at Heartspace Atrium, Level 2, Owen Building, SCII Tours departure point	12.30–1pm, departing at 12.30pm	Foundation year including: Animation, Fashion Design, Fine Art, Game Art, Graphic Design, Illustration, Interior Architecture & Design, Photography, Product Design.	You can take a tour of our SCII foundation year studios. Please meet us by the tour departure point on Atrium, Level 2 at 12.30pm.	SCII tours departure point, Atrium, Level 2

*This course is also available to study with a foundation year. For more information about studying the courses with foundation years please speak to our academic teams at the course stands.

COURSE TALKS AND STANDS

City Campus
 Collegiate Campus



Course Talk Subject Area	Where	When	Courses covered	Further details	Course stand name and location
Accounting and Finance	Room 38.04.01, Langsett Building, City Campus	11–11.45am 1.30–2.15pm	This talk covers Accounting and Finance*, Accounting and Finance (Management)*, Business Management and Finance.	This session covers the courses in detail, what and how you will learn, how we'll connect you with businesses in your sector and where our degrees could take you. It includes a taster session and time to chat with our academics and student ambassadors, and an opportunity to visit our Bloomberg Trading Floor. Please save time to visit the Sheffield Business School Student Experience stands in the Langsett Building and join an optional tour.	Accounting, Banking and Finance stand, Langsett Building
Acting and Performance	Arundel Gate Court Building, City Campus	11.15am–12.30pm	This talk covers Acting and Performance* (top up) and Musical Theatre (in association with Sheffield Theatres).	This time includes an overview of the courses, a Q&A with tutors and an optional tour of the facilities in Arundel Gate Court.	Film and Theatre stand, Heartspace Atrium, Level 2, Owen Building
Airline and Airport Management	Room 38.01.01, Langsett Building, City Campus	11–11.45am 1.30–2.15pm	This talk covers Airline and Airport Management* and Airline and Airport Management (top up).	This session covers the courses in detail, what and how you will learn, how we'll connect you with businesses in your sector and where our degrees could take you. It includes a taster session and time to chat with our academics and student ambassadors. Please save time to visit the Sheffield Business School Student Experience stands in the Langsett Building and join an optional tour.	Hospitality, Tourism and Aviation Management stand, Langsett Building
Animation	Room 5303/4, Surrey Building, City Campus	10.55am–12.15pm 1.25–2.45pm	This talk covers Animation*.	This time includes an overview of the course, a Q&A with tutors and current students and an optional tour of our specialist facilities. You may also like to attend our SCII foundation year facilities tours (see page 10).	Animation stand, Atrium, Level 2, Owen Building
Architecture	Dorothy Fleming Lecture Theatre, Charles Street Building, City Campus	12–1.15pm	This talk covers Architecture*.	This time includes an optional 30 minute tour of teaching and learning facilities.	Architecture stand, Redmires Building
Biosciences and Chemistry	Peak Lecture Theatre, Level 5, Owen Building City Campus	12–1.45pm	This talk covers Biochemistry*, Biology*, Biomedical Science*, Biomedicine and Health Science* and Chemistry*.	This time includes an optional 45 minute interactive lab experience.	Biosciences stand and Chemistry stand, Heartspace Atrium, Level 2, Owen Building
Building Surveying	Room 210, Norfolk Building, City Campus	11am–12.55pm	This talk covers Building Surveying*.	This session begins with an introduction to our Built Environment courses, and the employers we engage with. Followed by a dedicated course talk for Building Surveying and an optional 30 minute activity.	Construction Project Management and Building Surveying stand, Heartspace Atrium, Level 2, Owen Building

*This course is also available to study with a foundation year. For more information about studying the courses with foundation years please speak to our academic teams at the course stands.

COURSE TALKS AND STANDS

City Campus Collegiate Campus



Course Talk Subject Area	Where	When	Courses covered	Further details	Course stand name and location
Business: International Business and Languages	Room 38.01.05, Langsett Building, City Campus	11–11.45am 1.30–2.15pm	This talk covers International Business*, International Business (European Partnership Programme), International Business with Languages (French)*, International Business with Languages (Spanish)*.	This session covers the courses in detail, what and how you will learn, how we'll connect you with businesses in your sector and where our degrees could take you. It includes a taster session and time to chat with our academics and student ambassadors and an opportunity to visit our specialist facilities. Please save time to visit the Sheffield Business School Experience stands in the Langsett Building and join an optional tour.	International Business stand and Languages stand, Langsett Building
Business Management	Room 37.00.01, Strines Building, City Campus	11–11.45am 1.30–2.15pm	This talk covers Business Management and Enterprise*, Business Management*, Business and Management with Psychology*, Business Management with Law*, Business Management one year top up.	This session covers the courses in detail, what and how you will learn, how we'll connect you with businesses in your sector and where our degrees could take you. It includes a taster session and time to chat with our academics and student ambassadors. Please save time to visit the Sheffield Business School Student Experience stands in the Langsett Building and join an optional tour.	Business Management stand, Langsett Building
Business Management (Extended Sessions)	Room 37.01.01, Strines Building, City Campus Room 37.00.01, Strines Building, City Campus	11.45–12.15pm 2.15–2.45pm	Business Management and Enterprise, Business Management with AI, Business Management and Finance, Business Management with Law, Business Management with Psychology. For Business Management and Marketing, please attend the Marketing Talk.	Immediately following the Business Management talk, this additional session further explores the specialist courses listed. For Business Management and Marketing please attend the Marketing Talk.	Visit our subjects stands in Langsett Building
Children and Childhoods	Room 12.4.12, Charles Street Building, City Campus	11.30am–12.45pm	This talk covers Children and Childhoods*.	There is an optional 30 minute tour of the Sheffield Institute of Education Building following this talk. A taster exercise for this course is available throughout the day.	Children and Childhoods stand, Charles Street Building
Climate, Sustainability and Environmental Management	Room 36.02.17, Redmires Building, City Campus	10.30am–12pm	This talk covers Climate, Sustainability and Environmental Management*.	This time includes an optional 30 minute tour of teaching and learning facilities.	Climate, Sustainability and Environmental Management stand, Redmires Building
Computer Science and Software Engineering	Room 9130, Cantor Building, City Campus	10.30am–12pm 1–2.30pm	This talk covers Computer Science*, Software Engineering*, and Computer Science with Artificial Intelligence.	This session introduces our Computing and Maths courses followed by a dedicated course talk where you will discover more about a specific area of interest and explore facilities available to support your learning. Throughout the day, chat to academics and students across the discipline.	Computing stand, Cantor Building
Construction Project Management	Room 210, Norfolk Building, City Campus	11am–12.55pm	This talk covers Construction Project Management*.	This session begins with an introduction to our Built Environment courses, and the employers we engage with. Followed by a dedicated course talk for Construction Project Management and an optional 30 minute activity.	Construction Project Management and Building Surveying stand, Heartspace Atrium, Level 2, Owen Building

*This course is also available to study with a foundation year. For more information about studying the courses with foundation years please speak to our academic teams at the course stands.

COURSE TALKS AND STANDS

City Campus
 Collegiate Campus



Course Talk Subject Area	Where	When	Courses covered	Further details	Course stand name and location
Creative Writing - please see English and Creative Writing on page 16					
Criminology	Peak Lecture Theatre, Level 5, Owen Building, City Campus	10.45–11.45am	This talk covers Criminology*.	Visit the course stand for more information. You can also go on a campus tour to view our teaching and learning facilities.	Criminology stand, Redmires Building
Criminology and Psychology	Peak Lecture Theatre, Level 5, Owen Building, City Campus	1.30–2.30pm	This talk covers Criminology and Psychology*.	Visit the course stand for more information. You can also go on a campus tour to view our teaching and learning facilities.	Criminology stand, Redmires Building
Criminology and Sociology	Room 36.00.04, Redmires Building, City Campus	12–1pm	This talk covers Criminology and Sociology*.	Visit the course stand for more information. You can also go on a campus tour to view our teaching and learning facilities.	Criminology stand, Redmires Building
Cyber Security and Digital Forensics	Room 9130, Cantor Building, City Campus	10.30am–12pm 1–2.30pm	This talk covers Cyber Security*, Cyber Security with Forensics*.	This session introduces our Computing and Maths courses followed by a dedicated course talk where you will discover more about a specific area of interest and explore facilities available to support your learning. Throughout the day, chat to academics and students across the discipline.	Computing stand, Cantor Building
Diagnostic Radiography	Room E.0.03, Robert Winston Building Annex, Collegiate Campus	11.45am–1pm 1.15–2.30pm	This talk covers Diagnostic Radiography*.	<p>This time includes an optional 45 minute interactive experience in the teaching and learning facilities.</p> <p>For a tour of our clinical skills teaching environments, book onto a tour from room HC.0.07, Heart of the Campus Building. Tours take place between 9.30am –12.30pm and 2-2.30pm and will last 20 minutes.</p> <p>You may also like to attend our introductory talk for Allied Health (see page 10).</p>	Diagnostic Radiography stand, Room F343, Robert Winston Building
Digital Media Production	Room 37.02.08, Strines Building, City Campus	10.55–11.55am 1.25–2.25pm	This talk covers Digital Media Production*.	This time includes an optional 30 minute tour of teaching and learning facilities.	Digital Media and Games stand, Cantor Building
Economics and Financial Services	Room 38.02.01, Langsett Building, City Campus	11–11.45am 1.30–2.15pm	This talk covers Economics*, Business Economics*, Economics and Finance*, Banking and Finance*, Financial Trading and Investment Management*.	This session covers the courses in detail, what and how you will learn, how we'll connect you with businesses in your sector and where our degrees could take you. It includes a taster session and time to chat with our academics and student ambassadors and an opportunity to visit our specialist facilities. Please save time to visit the Sheffield Business School Experience stands in the Langsett Building and join an optional tour.	Economics stand and Financial Trading and Investment Management stand Langsett Building
Education, Psychology and Counselling	Room 12.4.12, Charles Street Building, City Campus	1–2.15pm	This talk covers Education with Psychology and Counselling*.	There is an optional 30 minute tour of the Sheffield Institute of Education Building following this talk. A taster exercise for this course is available throughout the day.	Education, Psychology and Counselling stand, Charles Street Building

*This course is also available to study with a foundation year. For more information about studying the courses with foundation years please speak to our academic teams at the course stands.

COURSE TALKS AND STANDS

City Campus Collegiate Campus



Course Talk Subject Area	Where	When	Courses covered	Further details	Course stand name and location
Engineering	Hertha Ayrton STEM Centre, City Campus	10.30am–12pm 1–2.30pm	This talk covers Aerospace Engineering*, Automotive Engineering*, Chemical Engineering*, Electrical and Electronic Engineering*, Mechanical Engineering*, Mechatronic and Robotic Engineering*, Civil Engineering (top-up), Electrical Engineering (top-up) and Mechanical Engineering (top-up).	This session provides an introduction to our engineering courses, giving you an insight into the support available, the opportunities you can take advantage of, and the projects you will undertake. It also includes a guided, interactive tour of our key labs and workshops, where you'll gain hands-on experience during your studies. You'll have the opportunity to meet engineering academics and current students, including members of our Formula Student team, SHU Racing.	Engineering stand, Hertha Ayrton STEM Centre
English and Creative Writing	Room 1028, Owen Building, City Campus	12.45–1.30pm	This talk covers English* and Creative Writing*.	Visit the course stand for more information. You can also go on a campus tour to view our teaching and learning facilities.	English and Creative Writing stand, Heartspace Atrium, Level 2, Owen Building
Events Management	Room 38.03.05, Langsett Building, City Campus	11–11.45am 1.30–2.15pm	This talk covers Events Management* and Events Management (top up).	This session covers the courses in detail, what and how you will learn, how we'll connect you with businesses in your sector and where our degrees could take you. It includes a taster session and time to chat with our academics and student ambassadors. Please save time to visit the Sheffield Business School Experience stands in the Langsett Building and join an optional tour.	Events Management stand, Langsett Building
Fashion Design	Room 16.3.01, Head Post Office, City Campus	10.55am–12.15pm 1.25–2.45pm	This talk covers Fashion Design*.	This time includes an overview of the course, a Q&A with tutors and current students and an optional tour of our specialist facilities. You may also like to attend our SCII foundation year facilities tours (see page 10).	Head Post Office Building
Fashion Management and Communication	Room 16.0.05, Head Post Office, City Campus	10.55am–12.15pm 1.25–2.45pm	This talk covers Fashion Management and Communication*.	This time includes an overview of the course, a Q&A with tutors and current students and an optional tour of the Head Post Office.	Head Post Office Building
Film and TV Production	Room 123 The Void, Owen Building, City Campus	10.55–11.55am 1.25–2.25pm	This talk covers Film and TV Production*.	This time includes an optional 30 minute tour of teaching and learning facilities.	Film and Theatre stand, Heartspace Atrium, Level 2, Owen Building
Financial Services (please see Economics, Banking and Financial Services)					
Fine Art	Room 16.-2.08, Head Post Office, City Campus	10.55am–12.15pm 1.25–2.45pm	This talk covers Fine Art*.	This time includes an overview of the course, a Q&A with tutors and current students and an optional tour of our specialist facilities. You may also like to attend our SCII foundation year facilities tours (see page 10).	Head Post Office Building

*This course is also available to study with a foundation year. For more information about studying the courses with foundation years please speak to our academic teams at the course stands.

COURSE TALKS AND STANDS

City Campus
 Collegiate Campus



Course Talk Subject Area	Where	When	Courses covered	Further details	Course stand name and location
Food and Nutrition	Room 1239, Owen Building, City Campus	11.15am–12.30pm 1.15–2.30pm	This talk covers Food and Nutrition*, Human Nutrition and Health*, Food and Nutrition (top up), Nutrition, Diet and Wellbeing (top up).	This session covers the courses in detail, what and how you will learn, how we'll connect you with businesses in your sector and where our degrees could take you. It includes a taster session and time to chat with our academics and student ambassadors and an opportunity to visit our specialist facilities. Please save time to visit the Sheffield Business School Experience stands in the Langset Building and join an optional tour.	Food and Nutrition stand, Langset Building
Games Design	Room 9234, Cantor Building, City Campus	10.55–11.55am 1.25–2.25pm	This talk covers Game Art* and Game Design Development*.	This time includes an overview of the course, a Q&A with tutors and current students and an optional tour of our specialist facilities. You may also like to attend our SCII foundation year facilities tours (see page 10).	Digital Media and Games stand Cantor Building
Games Programming	Room 9130, Cantor Building, City Campus	10.30am–12pm 1pm–2.30pm	This talk covers Computer Games Technologies*.	This session introduces our Computing and Maths courses followed by a dedicated course talk where you will discover more about a specific area of interest and explore facilities available to support your learning. Throughout the day, chat to academics and students across the discipline.	Computing stand, Cantor Building
Geography	Hallam View, Level 6 Owen Building, City Campus	10.30am–12pm	This talk covers Geography*.	This time includes an optional 30 minute tour of teaching and learning facilities.	Geography stand, Redmires Building
Graphic Design	Room 16.2.02, Head Post Office, City Campus	10.55am–12.15pm 1.25–2.45pm	This talk covers Graphic Design*.	This time includes an overview of the course, a Q&A with tutors and current students and an optional tour of our specialist facilities. You may also like to attend our SCII foundation year facilities tours (see page 10).	Head Post Office Building
History	Room 1028, Owen Building, City Campus	11.45am–12.30pm	This talk covers History*.	You can also visit the course stand for more information or go on a campus tour to view our teaching and learning facilities.	History stand, Heartspace Atrium, Level 2, Owen Building
Hospitality and Tourism Management	Room 38.01.02, Langset Building, City Campus	11–11.45am 1.30–2.15pm	This talk covers Business Management and Hospitality*, Business Management and Tourism*, International Tourism and Hospitality Business Management (top up)	This session covers the courses in detail, what and how you will learn, how we'll connect you with businesses in your sector and where our degrees could take you. It includes a taster session and time to chat with our academics and student ambassadors. Please save time to visit the Sheffield Business School Student Experience stands in the Langset Building and join an optional tour.	Hospitality, Tourism and Aviation Management stand, Langset Building
Illustration	Room 16.2.06, Head Post Office, City Campus	10.55am–12.15pm 1.25–2.45pm	This talk covers Illustration*.	This time includes an overview of the course, a Q&A with tutors and current students and an optional tour of our specialist facilities. You may also like to attend our SCII foundation year facilities tours (see page 10).	Head Post Office Building

*This course is also available to study with a foundation year. For more information about studying the courses with foundation years please speak to our academic teams at the course stands.

COURSE TALKS AND STANDS

City Campus
 Collegiate Campus



Course Talk Subject Area	Where	When	Courses covered	Further details	Course stand name and location
Information Technology with Business Studies	Room 9130, Cantor Building, City Campus	10.30am–12pm 1–2.30pm	This talk covers Information Technology with Business Studies*.	This session introduces our Computing and Maths courses followed by a dedicated course talk where you will discover more about a specific area of interest and explore facilities available to support your learning. Throughout the day, chat to academics and students across the discipline.	Computing stand, Cantor Building
Interior Architecture and Design	Room 16.1.08, Head Post Office, City Campus	10.55am–12.15pm 1.25–2.45pm	This talk covers Interior Architecture and Design*.	This time includes an overview of the course, a Q&A with tutors and current students and an optional tour of our specialist facilities. You may also like to attend our SCII foundation year facilities tours (see page 10).	Head Post Office Building
Journalism and Public Relations with Media	Room 9235, Cantor Building, City Campus	10.55–11.55am 1.25–2.25pm	This talk covers Journalism and Public Relations with Media*.	This time includes an optional 30 minute tour of teaching and learning facilities.	Media, PR & Journalism stand, Cantor Building
Languages - please see Business: International Business and Languages on page 14					
Law	The Dorothy Fleming Lecture Theatre, Charles Street Building, City Campus	1–2.30pm	This talk covers Law* and Law with Criminology*.	This time includes an optional 20 minute tour of teaching and learning facilities. If you would like a tour at an alternative time please visit the Law stand to arrange.	Law stand, Redmires Building
Marketing	Room 37.00.01, Strines Building, City Campus Room 38.03.01, Langsett Building, City Campus	12pm–12.45pm 2pm–2.45pm	This talk covers Business Management and Marketing*, Marketing*, Marketing Communications and Advertising*, Digital Marketing*, Marketing with Psychology*.	This session covers the courses in detail, what and how you will learn, how we'll connect you with businesses in your sector and where our degrees could take you. It includes a taster session and time to chat with our academics and student ambassadors. Please save time to visit the Sheffield Business School Student Experience stands in the Langsett Building and join an optional tour.	Marketing stand, Langsett Building
Mathematics and Data Science	Room 9130, Cantor Building, City Campus	10.30am–12pm 1–2.30pm	This talk covers Mathematics*, and Data Science*.	This session introduces our Computing and Maths courses followed by a dedicated course talk where you will discover more about a specific area of interest and explore facilities available to support your learning. Throughout the day, chat to academics and students across the discipline.	Mathematics stand, Cantor Building
Media and Communications	Room 9234, Cantor Building, City Campus	12.15–1.15pm	This talk covers Media and Communications*.	This time includes an optional 30 minute tour of teaching and learning facilities.	Media, PR & Journalism stand, Cantor Building
Midwifery	Room HC.0.06, Heart of the Campus, Collegiate Campus	1.45–3pm	This talk covers Midwifery*.	This time includes an optional 45 minute interactive experience in the teaching and learning facilities.	Midwifery stand, Room HC.0.29, Heart of the Campus
Nursing (Adult)	Herbert Wing 1, Main Hall, Collegiate Campus	12.45–1.15pm	This talk covers Nursing (Adult)*.	For a tour of our clinical skills teaching environments, book onto a tour from room HC.0.07, Heart of the Campus Building. Tours take place between 9.30am–12.30pm and 2-2.30pm and will last 20 minutes.	Adult Nursing stand, Room HC 1.52, Heart of the Campus

*This course is also available to study with a foundation year. For more information about studying the courses with foundation years please speak to our academic teams at the course stands.

COURSE TALKS AND STANDS

City Campus
 Collegiate Campus



Course Talk Subject Area	Where	When	Courses covered	Further details	Course stand name and location
Nursing (Child)	Room HC.0.06, Heart of the Campus, Collegiate Campus	12.45–1.45pm	This talk covers Nursing (Child)*.	This time includes an optional 30 minute demonstration of innovative teaching and learning methods used on the course.	Child Nursing stand, Rooms HC 1.53 & HC 1.54, Heart of the Campus
Nursing (Learning Disability) and Social Work	Room HC.0.32, Heart of the Campus, Collegiate Campus	1–2pm	This talk covers Nursing (Learning Disability) and Social Work*.	This time includes an optional 30 minute demonstration of innovative teaching and learning methods used on the course.	Nursing (Learning Disability) and Social Work stand, Level 1, Heart of the Campus
Nursing (Mental Health)	Room HC.0.15, Heart of the Campus, Collegiate Campus	12.45–1.45pm	This talk covers Nursing (Mental Health)*.	This time includes an optional 30 minute demonstration of innovative teaching and learning methods used on the course. For a tour of our clinical skills teaching environments, book onto a tour from room HC.0.07, Heart of the Campus Building. Tours take place between 9.30am–12.30pm and 2–2.30pm and will last 20 minutes.	Mental Health Nursing stand, Room HC 1.52, Heart of the Campus
Occupational Therapy	Mary Badlands Lecture Theatre, Collegiate Campus	1–2.30pm	This talk covers Occupational Therapy*.	This time includes an optional 45 minute interactive experience in the teaching and learning facilities. For a tour of our clinical skills teaching environments book onto a tour from room HC.0.07, Heart of the Campus Building. Tours take place between 9.30am–12.30pm and 2–2.30pm and will last 20 minutes. You may also like to attend our introductory talk for Allied Health (see page 10).	Occupational Therapy stand, Room F335, Robert Winston Building
Operating Department Practice	Room F339, Robert Winston Building, Collegiate Campus	1.15–2.15pm	This talk covers Operating Department Practice*.	This time includes an optional 30 minute tour of teaching and learning facilities. For a tour of our clinical skills teaching environments, book onto a tour from room HC.0.07, Heart of the Campus Building. Tours take place between 9.30am–12.30pm and 2–2.30pm and will last 20 minutes. You may also like to attend our introductory talk for Allied Health (see page 10).	Operating Department Practice stand Room F336, Robert Winston Building
Paramedic Science	Room F518, Robert Winston Building, Collegiate Campus	11.45am–12.45pm 1.15–2.15pm	This talk covers Paramedic Science*.	This time includes an optional 30 minute demonstration of teaching and learning facilities. For a tour of our clinical skills teaching environments, book onto a tour from room HC.0.07, Heart of the Campus Building. Tours take place between 9.30am–12.30pm and 2–2.30pm and will last 20 minutes. You may also like to attend our introductory talk for Allied Health (see page 10).	Paramedic Science stand, Room F310, Robert Winston Building

*This course is also available to study with a foundation year. For more information about studying the courses with foundation years please speak to our academic teams at the course stands.

COURSE TALKS AND STANDS

City Campus Collegiate Campus



Course Talk Subject Area	Where	When	Courses covered	Further details	Course stand name and location
Photography	Howard 5321, Howard Building, City Campus	10.55am–12.15pm 1.25–2.45pm	This talk covers Photography*.	This time includes an overview of the course, a Q&A with tutors and current students and an optional tour of our specialist facilities. You may also like to attend our SCII foundation year facilities tours (see page 10).	Photography Stand, Atrium, Level 2, Owen Building
Physics	Room 4226, Sheaf Building, City Campus	11.45am–12.30pm 1.45–2.30pm	This talk covers Physics*.	This time includes a course talk and an optional tour of teaching and learning facilities.	Physics stand, Hertha Ayrton STEM Centre
Physiotherapy	Room F518, Robert Winston Building, Collegiate Campus	12.30–1.45pm 2–3.15pm	This talk covers Physiotherapy*.	This time includes an optional 45 minute interactive experience in the teaching and learning facilities. For a tour of our clinical skills teaching environments, book onto a tour from room HC.0.07, Heart of the Campus Building. Tours take place between 9.30am–12.30pm and 2–2.30pm and will last 20 minutes. You may also like to attend our introductory talk for Allied Health (see page 10).	Physiotherapy stand, Room F407, Robert Winston Building
Politics and International Relations	Room 12.5.08, Charles Street Building, City Campus	11–11.45am	This talk covers Politics and International Relations*.	This time includes an optional 15 minute Q&A session.	Politics and International Relations stand, Redmires Building
Primary and Early Years	The Dorothy Fleming Lecture Theatre, Charles Street Building, City Campus	10.45–11.30am	This talk covers Primary Education (5–11) with QTS and Early Years and Primary Education (3–7) with QTS.	These are three-year undergraduate courses leading to a degree and Qualified Teacher Status (QTS). There is an optional 30 minute tour of the Sheffield Institute of Education Building following this talk. A taster exercise for this course is available throughout the day.	Primary 3–7, Primary 5–11 stand, Charles Street Building
Product Design	Room 16.1.08, Head Post Office, City Campus	10.55am–12.15pm 1.25–2.45pm	This talk covers Product Design*.	This time includes an overview of the course, a Q&A with tutors and current students and an optional tour of our specialist facilities. You may also like to attend our SCII foundation year facilities tours (see page 10).	Head Post Office Building
Professional Policing	Room 36.02.01, Redmires Building, City Campus	12–1pm	This talk covers Professional Policing*.	This time includes a 30 minute taster session.	Professional Policing stand, Redmires Building
Psychology	Pennine Lecture Theatre, Level 2, Owen Building, City Campus	11.30am–12.30pm	This talk covers Psychology*.	Please visit the Psychology stand to book on to a tour of our teaching and learning facilities, the tours run every 30 minutes from 10am, the last tour departs at 3pm.	Psychology stand, Redmires Building
Quantity Surveying	Room 210, Norfolk Building, City Campus	11am–12.55pm	This talk covers Quantity Surveying*.	This session begins with an introduction to our Built Environment courses, and the employers we engage with. Followed by a dedicated course talk for Quantity Surveying and an optional 30 minute activity.	Construction Project Management and Building Surveying stand, Atrium Level 2

*This course is also available to study with a foundation year. For more information about studying the courses with foundation years please speak to our academic teams at the course stands.

COURSE TALKS AND STANDS

 City Campus

 Collegiate Campus


Course Talk Subject Area	Where	When	Courses covered	Further details	Course stand name and location
Radiotherapy and Oncology	Room E.0.01, Robert Winston Building Annex, Collegiate Campus	11.45am–1.15pm 1.30–3pm	This talk covers Radiotherapy and Oncology*.	This time includes an optional 45 minute interactive experience in the teaching and learning facilities. For a tour of our clinical skills teaching environments, book onto a tour from room HC.0.07, Heart of the Campus Building. Tours take place between 9.30am–12.30pm and 2-2.30pm and will last 20 minutes. You may also like to attend our introductory talk for Allied Health (see page 10).	Radiotherapy and Oncology stand, Room F341, Robert Winston Building
Real Estate	Room 38.02.04, Langsett Building, City Campus	11–11.45am 1.30–2.15pm	This talk covers Real Estate.	This session covers the courses in detail, what and how you will learn, how we'll connect you with businesses in your sector and where our degrees could take you. It includes a taster session and time to chat with our academics and student ambassadors. Please save time to visit the Sheffield Business School Student Experience stands in the Langsett Building and join an optional tour.	Real Estate stand, Langsett Building
Social Work	Room HC.0.32, Heart of the Campus, Collegiate Campus	2.15pm–3.15pm	This talk covers Social Work.	This time includes an optional 30 minute demonstration of innovative teaching and learning methods used on the course.	Social Work stand, Level 1, Heart of the Campus
Sociology	Room 36.01.18, Redmires Building, City Campus	10.30–11.30am	This talk covers Sociology*.	This time includes an optional 15 minute Q&A session.	Sociology stand, Redmires Building
Sport	Herbert Wing 1, Main Hall, Collegiate Campus	11am–1pm 1.30–3.30pm	This talk covers Physical Education and School Sport*, Sport and Exercise Science*, Sport, Exercise and Health*, Sport Coaching*, Sport Business Management* and Sports Therapy*.	This time includes a 30 minute introduction to our sport courses, followed by a 30 minute talk about the specific course you are interested in. After this there will be an optional 45 minute demonstration of innovative teaching and learning methods used on the course.	Sport stand, Heart of the Campus
Sports Journalism	Room 9231, Cantor Building, City Campus	10.55–11.55am 1.25–2.25pm	This talk covers Sports Journalism*.	This time includes an optional 30 minute tour of teaching and learning facilities.	Media, PR & Journalism stand, Cantor Building
Working with Children, Young People and Families	Room HC.0.17, Heart of the Campus, Collegiate Campus	1.15–2.15pm	This talk covers the Working with Children, Young People and Families courses.	This time includes an optional 30 minute demonstration of innovative teaching and learning methods used on the course.	Working with Children, Young People and Families stand, Level 1, Heart of the Campus

*This course is also available to study with a foundation year. For more information about studying the courses with foundation years please speak to our academic teams at the course stands.

SUPPORT TALKS AND STANDS

What do you want to find out about?	Talks: where and when?		Chat to us all day from 9.30
Welcome talk Start your day with a brief introduction to Sheffield Hallam University from our staff and students.	City Campus Pennine Lecture Theatre, Level 2, Owen Building 9.45–10.15am 10.30–11am 12.45–1.15pm	Collegiate Campus HC.0.06, Heart of the Campus, 10–10.30am	Speak to our friendly students and staff at any point today if you have any questions – we're happy to help.
Accommodation Speak to our staff for an overview of our accommodation options and advice on applying.	City Campus Room 1028, Owen Building 10.45am–11.15am	Collegiate Campus Herbert Wing 2, Main Hall 12.30–1pm	City Campus Heartspace Atrium, Level 2, Owen Building Collegiate Campus Heart of the Campus
Admissions: applying to Sheffield Hallam University Chat to us about UCAS timelines, personal statements, and the university application process.	City Campus Room 1031, Owen Building 11.30am–12pm		City Campus Heartspace Atrium, Level 2, Owen Building Collegiate Campus Heart of the Campus
Applying through Clearing to study in 2026? Visit our team to make your application.			City Campus Room 5420/5425, Howard Building Collegiate Campus Room HC.0.34/HC.0.35, Heart of the Campus
Degree apprenticeships Earn while you learn and progress into highly skilled careers. Please note: there is no talk for this support area.			City Campus Heartspace Atrium, Level 2, Owen Building
Financial support Find out what financial support is available, how to apply and when. Please note: there is no talk for this support area.			City Campus Heartspace Atrium, Level 2, Owen Building Collegiate Campus Heart of the Campus
Hallam Progress - Applicant and Transition Support Scheme We know that some students face more challenges than others when going to uni – we support 14 different student groups on our access programmes to make sure you get the help and advice you need. Come and talk to us about the support on offer. Please note: Hallam Progress is covered in the Supporting you at Hallam talk (see page 34).			City Campus Heartspace Atrium, Level 2, Owen Building Collegiate Campus Heart of the Campus

Turn the page for more support sessions



SUPPORT TALKS AND STANDS

What do you want to find out about?	Talks: where and when?		Chat to us all day from 9.30
<p>Library & Skills Centre Chat to us about the Library's 24/7/365 spaces and resources, the sessions we offer to support your research and academic skills development, and how we support every student at Sheffield Hallam University to become an independent learner and to be successful in their studies.</p> <p>Please note: there is no talk for this support area.</p>			<p>City Campus Heartspace Atrium, Level 2, Owen Building</p> <p>Collegiate Campus Heart of the Campus</p>
<p>Minoritised student groups and Black British Pathway Programme Come to the stand and speak to current students about their experience of studying at Sheffield Hallam University as a student from a minority ethnic background and hear about what's on offer.</p> <p>Please note: there is no talk for this support area.</p>			<p>City Campus Heartspace Atrium, Level 2, Owen Building</p> <p>Collegiate Campus Heart of the Campus</p>
<p>Parent ambassadors Speak to one of our parent ambassadors to find out more about their experiences of supporting a child at university.</p>			<p>City Campus Heartspace Atrium, Level 2, Owen Building</p>
<p>Join us for live cooking demonstrations at 10am, 10.30am, 1.30pm and 2.15pm at Hallam Café, Level 5, Owen Building.</p>			
<p>Sport Hallam: Sport and Physical Activity Sport Hallam offers a wide range of inclusive sport and physical activity opportunities for all abilities, from beginners to elite and dual-career athletes. With world-class facilities, performance programmes, social sport and wellbeing initiatives, there are plenty of ways to stay active, meet new people and support your mental and physical health.</p> <p>Whether you want to try something new, continue a passion, or build skills for future career pathways in sport and physical activity, there is something for everyone. Speak to our team on the day to find out how Sport Hallam can be part of your university experience.</p>	<p>City Campus Room 1031, Owen Building 12.30–1pm</p>	<p>Collegiate Campus Herbert Wing 1, Main Hall 10.15–10.45am</p>	<p>City Campus Heartspace Atrium, Level 2, Owen Building</p> <p>Collegiate Campus Heart of the Campus</p>
<p>Student support Talk to us about the wide range of support we offer. See page 34 for details of the Supporting you at Hallam talk.</p>			<p>City Campus Heartspace Atrium, Level 2, Owen Building</p> <p>Collegiate Campus Heart of the Campus</p>
<p>Student work opportunities Are you thinking about part-time work alongside your studies? Speak to one of our Student Recruitment, Events and Marketing Ambassadors to find out more about the flexible part-time work opportunities on offer through our Student Ambassador Programme.</p> <p>Please note: there is no talk for this support area.</p>			<p>City Campus Heartspace Atrium, Level 2, Owen Building</p>



SUPPORT TALKS AND STANDS

What do you want to find out about?	Talks: where and when?		Chat to us all day from 9.30
Study and work abroad opportunities Find out about our range of opportunities to study and work abroad as part of our courses.	City Campus Room 1032 Owen Building 11.30–11.45am		City Campus Careers and Employability centre, Level 2, Owen Building
Supporting you at Hallam Sheffield Hallam University offers a wide range of support and guidance related to your course and personal wellbeing. This talk will give an overview of the services available to you, both before you arrive (through our Access schemes) and during your time here.	City Campus Careers and Employability Centre, Level 2, Owen Building 11.15–11.45am	Collegiate Campus HC.0.16, Heart of the Campus, Collegiate Campus 10.45–11.15am	City Campus Heartspace Atrium, Level 2, Owen Building Collegiate Campus Heart of the Campus
Your future career From the moment you arrive at Sheffield Hallam University, we're here to help you with your future career plans. Talk to us about how we can make you ready for work with work experience, work opportunities and working for yourself. You can also join us for our talk: Your placement year – put your learning into practice.			City Campus Heartspace Atrium, Level 2, Owen Building Collegiate Campus Heart of the Campus
Your placement year - put your learning into practice Hear careers experts and students who have recently completed a placement talk about the benefits of a placement year. You'll find out what a placement is, and the range of options available to you, including setting up your own business. You'll learn why it's an important part of your course and how it can positively impact your degree result and your future graduate career.	City Campus Careers and Employability Centre, Heartspace Atrium, Level 2, Owen Building 12.15–12.45pm	City Campus Heartspace Atrium, Level 2, Owen Building Collegiate Campus Heart of the Campus You can also visit your course stand for more information about placement opportunities for your course.	Please visit our future career stand to find out more about placement years.
Please note, this talk does not cover placements for education and health courses as that will be covered in the subject specific talks for those areas.			



Meet your Students' Union

We're your gateway to a world of exciting events, new friends and experiences, support when you need it, and opportunities that give you the edge when applying for your dream job.

Things to love about *your* SU

Great times

We bring you exciting events and experiences across the city.

Big opportunities

Make lifelong friends, develop new skills, and do more of what you love!

Helping hands

Our team of specialist advisers are here for you.

Real change

Big or small, your thoughts and ideas matter, at uni, in wider society, and here at the SU too.

Download the app

to see the best of Sheffield and get loads of discounts. Scan QR below.

Pop in and say hello!

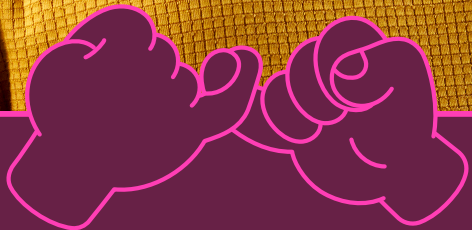
Visit us in our brand-new space right at the entrance to Owen building. Meet students, staff, and societies to get a real feel for what it's like to be a Hallam student.



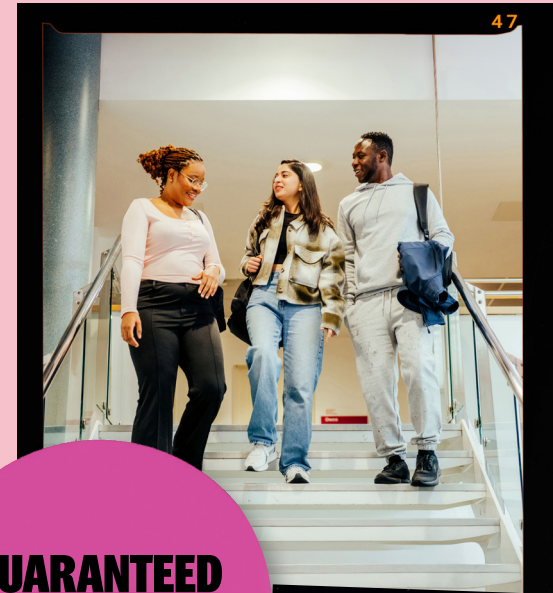
Follow us @hallamsu
 hallamstudentsunion.com



YOUR HOME FROM HOME



ACCOMMODATION TO VISIT TODAY



**GUARANTEED
ACCOMMODATION
OFFER**

If you're thinking about leaving home for university, we make it easy. We have affordable halls of residence to suit all tastes, from large and sociable to small and friendly – and they come with all the support you need to make it a home from home.

**NO HIDDEN
COSTS
ALL BILLS
INCLUDED**

What's more, when you apply for our halls as a full-time undergraduate student we'll make sure you're living with other Sheffield Hallam University students, so you'll be making friends from day one.

See 360 degree videos of all our halls and apply at shu.ac.uk/accommodation












➤ *TAKE A
TOUR*



OUR ACCOMMODATION



We offer a range of 11 properties in total 9 are open for visitors today. Please speak to the accommodation team for full details of all properties. Our staff will point you in the right direction on arrival at all our accommodation. Check out the map on page 44 to see all our open accommodation locations across the city.

Map number	Name and Postcode	Description	Prices from per week	Mins walk to City	Mins walk to Collegiate	Get there from City Campus	Get there from Collegiate Campus
1	 The Anvil Clough Road S1 4TB	A medium sized friendly student halls located within a nearby residential area of the city centre with easy access to local amenities. The Anvil hosts a varied social calendar of activities along with limited car parking available to residents.	£109.00	15	20	Walk from City Campus to Clough Road. Speak to a member of staff if you need directions.	Hop on the campus shuttle bus from outside Heart of the Campus and when you arrive at City Campus walk to Clough Road. Speak to a member of staff if you need directions.
4	 Devonshire Courtyard Wellington St S1 4HG	Situated in the Devonshire quarter of the city centre, Devonshire Courtyard is conveniently located between both Hallam campuses. The property boasts various communal areas including a common room, free on-site gym, cinema, hosting kitchen, dedicated study areas and a relaxing internal courtyard with seating.	£113.00	10	18	Walk from City Campus to Wellington Street. Speak to a member of staff if you need directions.	Hop on the campus shuttle bus from outside Heart of the Campus and when you arrive at City Campus walk to Wellington Street. Speak to a member of staff if you need directions.
5	 The Elements Bramall Ln S2 4FQ	The Elements provides modern and comfortable student living in a prime location near supermarkets with easy access to both Hallam campuses. The Elements benefits from a large study room, a free onsite gym, wheelchair accessibility, a common room covering 2 floors and a varied social calendar of activities.	£129.00	15	20	Hop on the bus at Brown Street and get off at London Road. Our staff will point you in the right direction on arrival.	Take the Collegiate route bus from outside Heart of the Campus and get off at London Road. Our staff will point you in the right direction on arrival.
6	 Exchange Works Arundel St S1 4RE	With just a two-minute walk away from City campus there are few excuses to be late for your lectures when living at Exchange Works. The property features a range of facilities, including a study room, common room, a free on-site gym, and an outdoor recreational space set within the internal courtyard. All rooms have en-suite bathrooms and share a kitchen/living area.	£109.00	2	25	Walk from City Campus to Arundel Street. Staff and students will be available to point you in the right direction.	Hop on the campus shuttle bus from outside Heart of the Campus and when you arrive at City Campus walk to Arundel Street. Staff and students will point you in the right direction.
7	 The Forge Boston St S2 4QG	The largest hall of residence available, The Forge has a wide range of facilities including free on-site gym access, quiet study spaces, various communal spaces including games areas, a cinema room and an outdoor half basketball court. Residents can also enjoy a varied social programme and benefit from limited on-site car parking. All rooms have en-suite bathrooms and share a kitchen/living area.	£110.00	15	15	Hop on the bus at Brown Street and get off at London Road. Our staff will point you in the right direction on arrival.	Take the Collegiate route bus from outside Heart of the Campus and get off at London Road. Our staff will point you in the right direction on arrival.
8	 The Gate Eyre St S1 4RB	Ideally located just a 3-minute walk to City Campus, The Gate hosts a variety of modern communal spaces ideal for studying and socialising. The property also offers a free on-site gym, wheelchair accessibility, and sky lounge for the most wonderful views of the city centre. All rooms have en-suite bathrooms and share a kitchen/living area.	£151.00	3	20	Walk from City Campus to Eyre Street. Staff and students will be available to point you in the right direction.	Hop on the campus shuttle bus from outside Heart of the Campus and when you arrive at City Campus walk to Eyre Street. Staff and students will point you in the right direction.
9	 LIV Student Ecclesall Rd S11 8HY	Located in a popular student area, LIV Student offers a stylish and social student living experience. The 9th floor is dedicated to relaxing, studying and socialising. Enjoy a free on-site gym, private dining room, games area and a karaoke room to sing your heart out with friends. Head to the terrace to enjoy spectacular views of the city.	£161.00	15	10	Hop on the bus at Brown Street and get off at Cemetery Road. Our staff will point you in the right direction on arrival.	Take the Collegiate route bus from outside Heart of the Campus and get off at Cemetery Road. Our staff will point you in the right direction on arrival.
10	 The Pinnacles Broad St S2 5TL	Close to City campus, The Pinnacles offers en-suite rooms, a free on-site gym, a cinema room, a common room with arcade games, and a varied social calendar of activities to help you settle in and meet new friends. The Pinnacles is also conveniently located for local and national transport links.	£99.00	10	30	Hop on the bus at Brown Street and get off at The Pinnacles. Our staff will point you in the right direction on arrival.	Hop on the campus shuttle bus from outside Heart of the Campus and swap buses at City Campus. Staff and students will point you in the right direction.
11	 The Trigon Shoreham St S1 4RA	Close to campus, this friendly student halls hosts a common room, an enclosed outdoor courtyard area complete with seating and a large welcoming reception often used by the friendly on-site management to host student events. All rooms have en-suite bathrooms and share a kitchen/living area.	£96.00	5	25	Walk from City Campus to Shoreham Street. Staff and students will be available to point you in the right direction.	Hop on the campus shuttle bus from outside Heart of the Campus and when you arrive at City Campus walk to Shoreham Street. Staff and students will point you in the right direction.

All prices are correct at the time of printing, but could be subject to change. Please check our website for up-to-date information.

Only the open properties are listed here with their corresponding numbers on the accommodation team's map.



EXPLORE OUR CAMPUSES

Accommodation and campus map	p44
City Campus map	p46
Collegiate Campus map	p48

ACCOMMODATION AND CAMPUS MAP

Check the corresponding numbers on page 40 for details about the accommodation on this map.

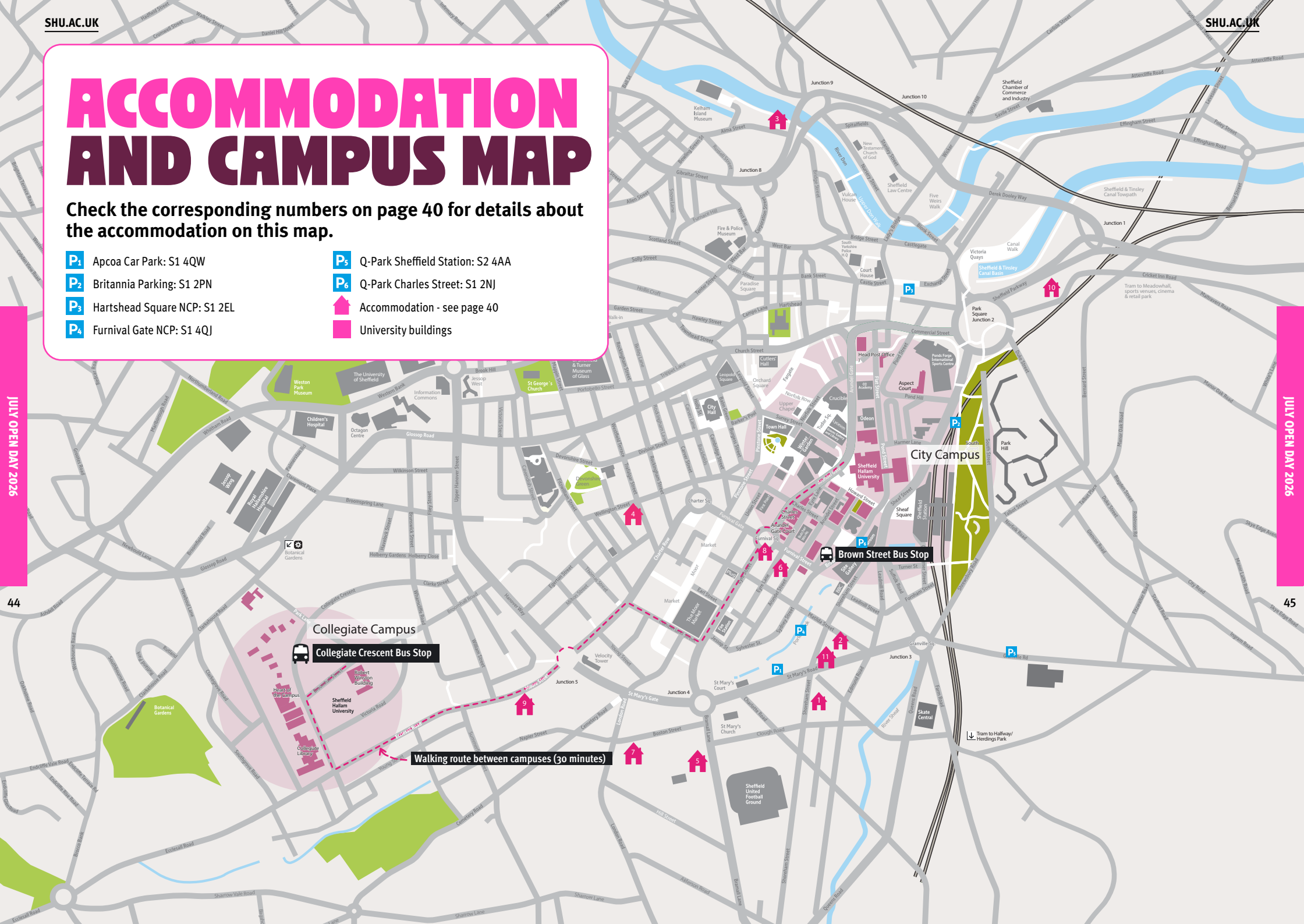
- P₁** Apcoa Car Park: S1 4QW
- P₂** Britannia Parking: S1 2PN
- P₃** Hartshead Square NCP: S1 2EL
- P₄** Furnival Gate NCP: S1 4QJ
- P₅** Q-Park Sheffield Station: S2 4AA
- P₆** Q-Park Charles Street: S1 2NJ
-  Accommodation - see page 40
-  University buildings

JULY OPEN DAY 2026

JULY OPEN DAY 2026

44

45



Walking route between campuses (30 minutes)

Collegiate Campus

Collegiate Crescent Bus Stop

City Campus

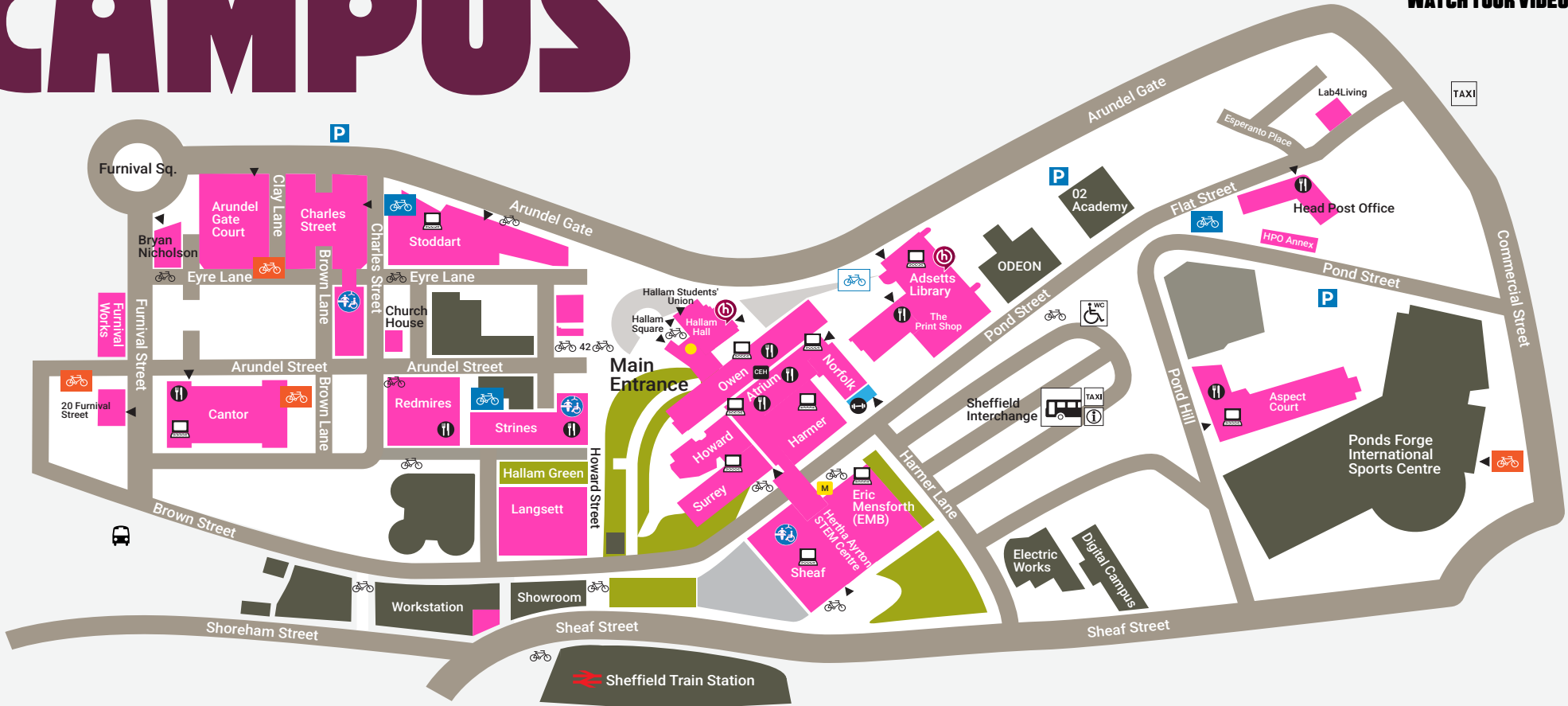
Brown Street Bus Stop

Train to Halfway/Herdings Park

CITY CAMPUS



WATCH TOUR VIDEOS

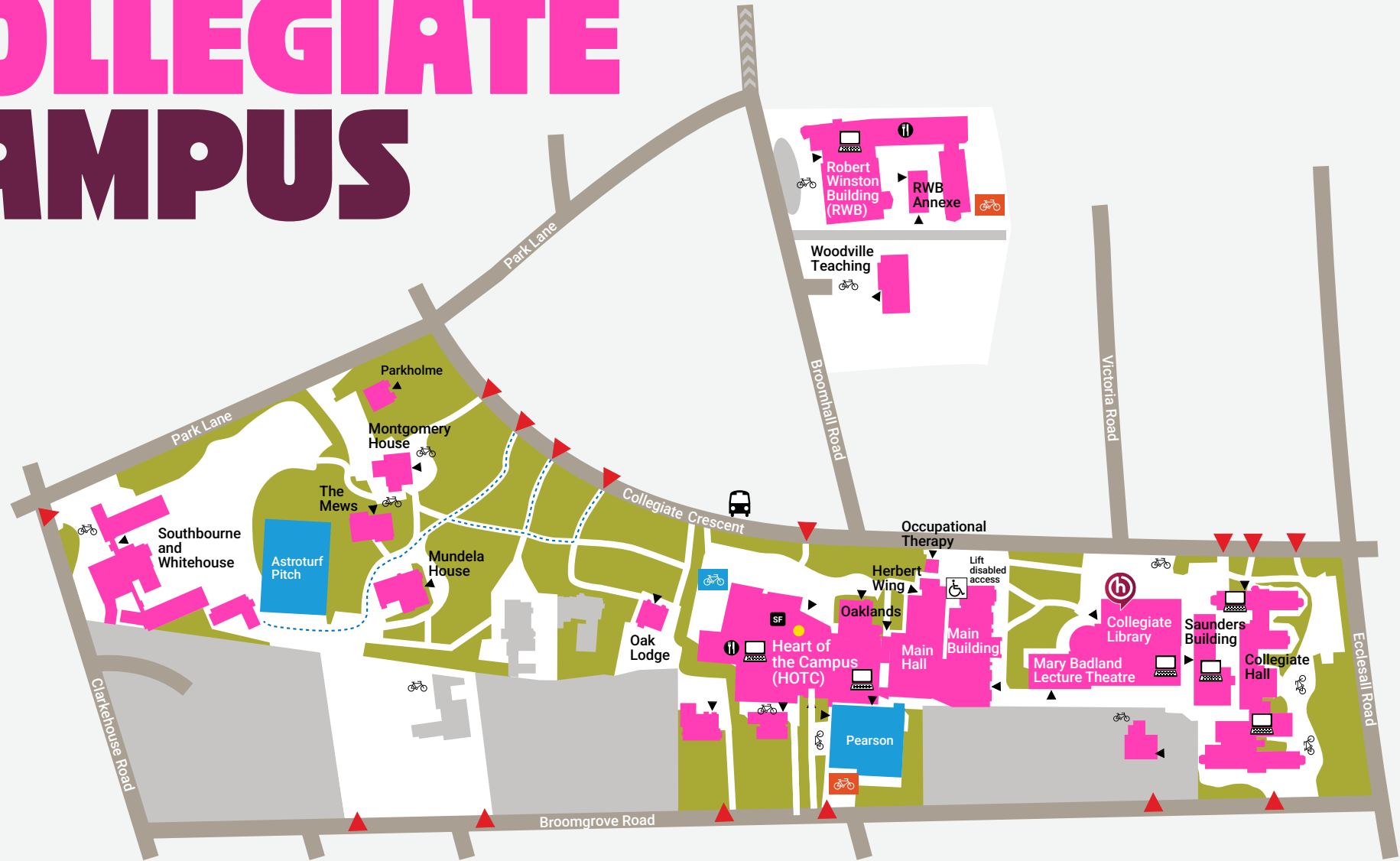


JULY OPEN DAY 2026

JULY OPEN DAY 2026

- ▼ Entrance to building
- 🚲 Bike racks
- 🚲🛡️ Bike racks with covered storage
- 🚲🛡️👤 Bike racks with covered storage (staff only)
- 🚲🛡️🚰 Cycle hub
- 🏠 University buildings
- 🏋️ Sport and fitness facilities
- 🚗 Coach stop - shuttle
- 📍 Hallam Help
- ♿ Changing Places toilets
- 💻 PC locations
- 🍴 Eating on campus
- 🟡 Main reception
- 🏠 CEH Careers and Employability Hub
- 🅑 Car park

COLLEGIATE CAMPUS



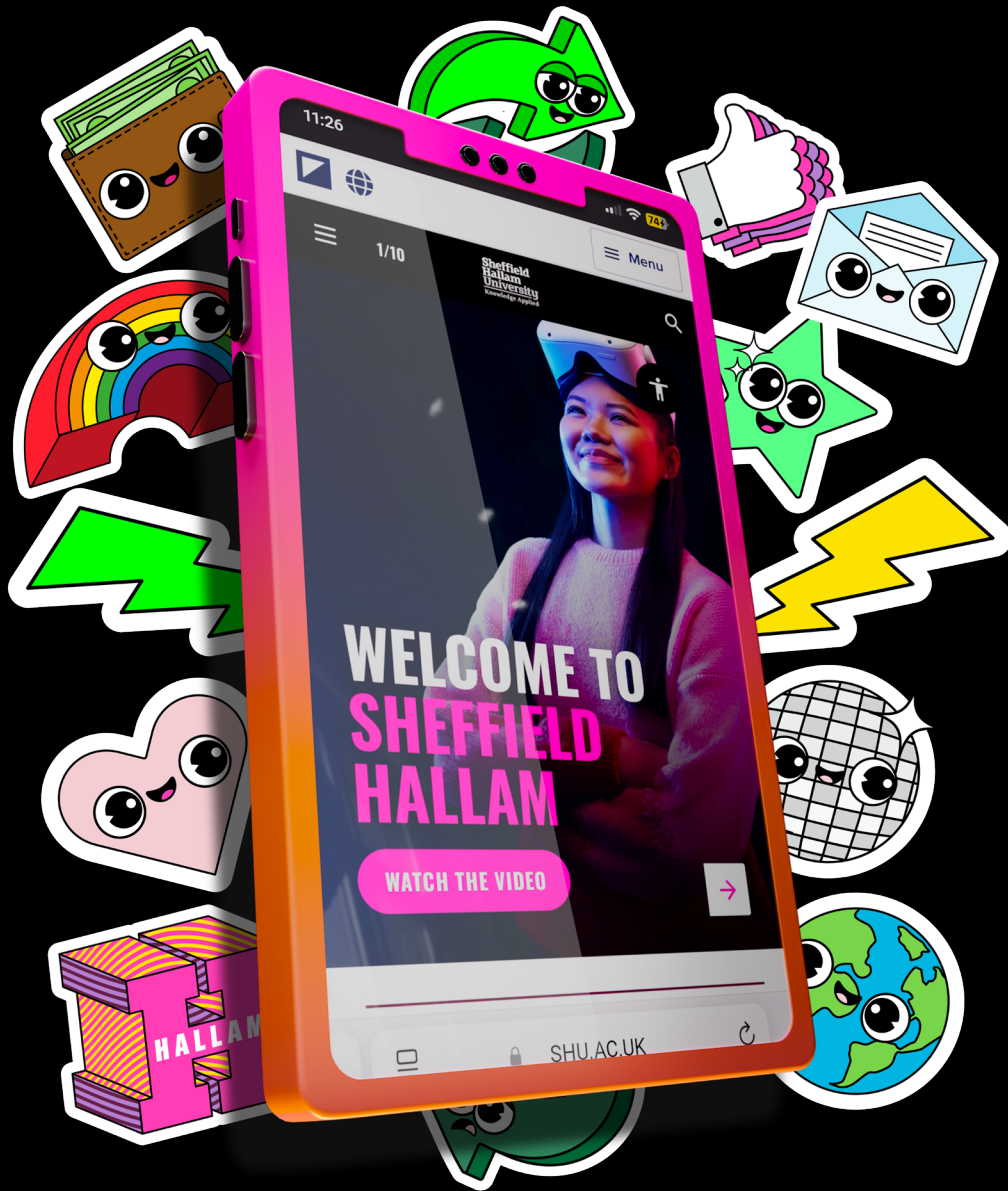
JULY OPEN DAY 2026

JULY OPEN DAY 2026

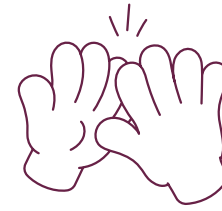


WATCH TOUR VIDEOS

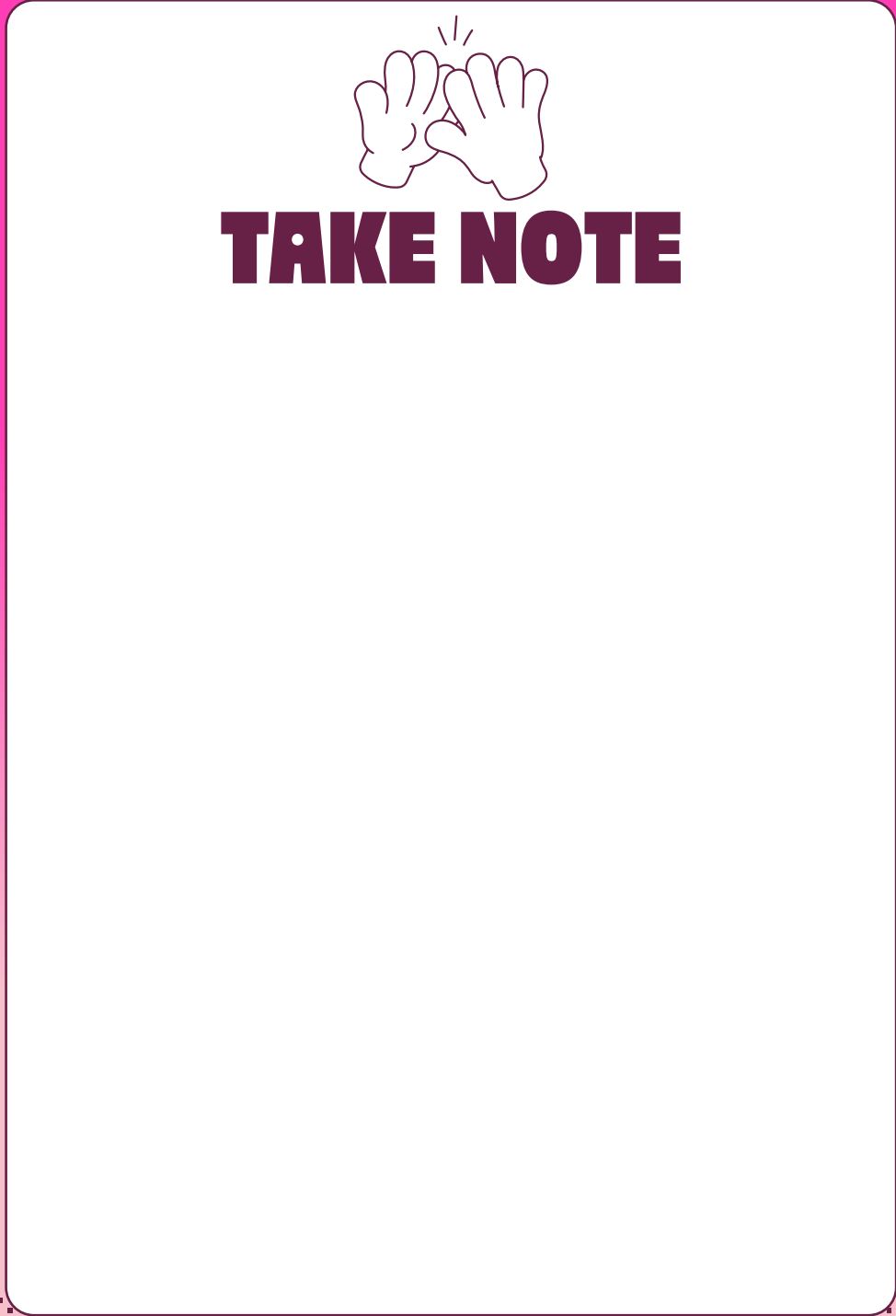
- Entrance to building
- Entrance to campus
- Bike racks
- Bike racks with covered storage
- Bike racks with covered storage (staff only)
- Coach stop - shuttle
- Accessible route
- Place to eat at the open day
- Hallam Help
- Main Reception
- One way street
- PC locations
- Sports and Fitness facilities
- University buildings



EXPLORE
our digital or print
undergraduate prospectus



TAKE NOTE



**Sheffield
Hallam
University**

**PROMISE
MADE** 
**CAREER
LAUNCHED**



**SCAN FOR ARRIVAL
GUIDANCE & UPDATES**